



House (EPC Rating:)

OFFICE 4 28A HOGHTON STREET, SOUTHPORT, MERSEYSIDE, PR9 0PA

PCM

£500 PCM

FEATURES

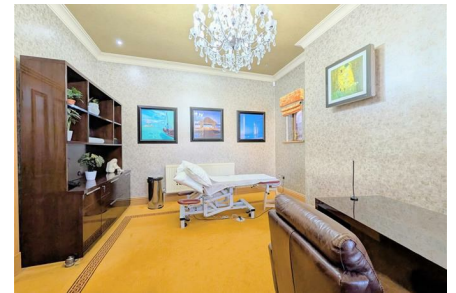
- Charming Office Complex
- Ground Floor Location
- Fantastic Local Transportation Links
- EPC Rating : D
- Mediterranean Feel Throughout
- Town Centre Location
- Shared Bills Between Three Other Offices



 **anthony james**
estate agents

0 Bedroom House located in Southport

RENTALS | CHARLOTTE HOUSE, GROUND FLOOR, 35-37 HOGHTON STREET, SOUTHPORT, MERSEYSIDE, PR9 0NS



RENTALS | CHARLOTTE HOUSE, GROUND FLOOR, 35-37 HOGHTON STREET, SOUTHPORT, MERSEYSIDE, PR9 0NS

Call us on

01704543434

rentals@ajestateagents.co.uk

https://www.ajestateagents.co.uk/properties/rent

Council Tax Band



Energy Efficiency Rating		Current	Potential
<i>Very energy efficient - lower running costs</i>			
(92 plus) A			
(81-91) B			
(69-80) C			
(55-68) D			
(39-54) E			
(21-38) F			
(1-20) G			
<i>Not energy efficient - higher running costs</i>			
England & Wales		EU Directive 2002/91/EC	

Agents Note: Whilst every care has been taken to prepare these particulars, they are for guidance purposes only. All measurements are approximate and are for general guidance purposes only and whilst every care has been taken to ensure their accuracy, they should not be relied upon and potential buyers are advised to recheck the measurements.

