



The Priory St. Chad
Barrow-Upon-Humber

Guide Price £550,000 – £585,000

WIGWAM

The Priory St. Chad

Barrow-Upon-Humber

- Exceptional grade II listed period residence
- Circa 1720
- Original period features and fireplaces
- Large rear enclosed garden

Situated in the heart of a historic village, this exceptional Grade II listed period residence offers a unique opportunity to own a piece of timeless elegance. Dating back to circa 1720, this beautifully presented house exudes charm and character at every turn, showcasing a blend of original period features and fireplaces.

Stepping inside, you are greeted by a grand entrance that leads into well-proportioned rooms, each boasting intricate detailing that sets this property apart. The large windows invite an abundance of natural light, creating a warm and welcoming ambience throughout.

The drawing room is a sanctuary of comfort, with its striking fireplace serving as a focal point for gatherings and relaxation. The modern kitchen, equipped with state-of-the-art appliances, is a chef's delight, perfect for culinary creations and entertaining guests.

Upstairs, the bedrooms offer peaceful retreats, each uniquely designed to provide comfort and style.



The Priory St. Chad

Barrow-Upon-Humber

Every corner of this house reflects a high standard of craftsmanship and attention to detail, offering a combination of elegance and practicality that is truly unmatched.

Outside, the large rear enclosed garden provides a serene escape from the hustle and bustle of every-day life, creating an outdoor sanctuary for gardening, al fresco dining, or simply soaking up the sun in peace and privacy.

Conveniently located near local amenities, schools, and transport links, this property offers the perfect balance of tranquillity and accessibility. Early viewing is strongly recommended to appreciate the full charm and grandeur of this remarkable residence.

Ready to move into and enjoy, this house is not simply a building but a potential home where memories are waiting to be made. Don't miss the opportunity to own a piece of history and make this exceptional property yours.

Council Tax band: E

Tenure: Freehold

EPC Energy Efficiency Rating: D

EPC Environmental Impact Rating:





Dining kitchen

Living room

Drawing room

Dining room

Laundry room

Hallway

Bedroom 2 en-suite

Master bedroom

Master bedroom en-suite

Bedroom 2

W/C

Bedroom 3

Bathroom 1

Bedroom 4

Bathroom 2

Bedroom 5

Landing

Rear Garden

2 storey barn/wood store

Driveway

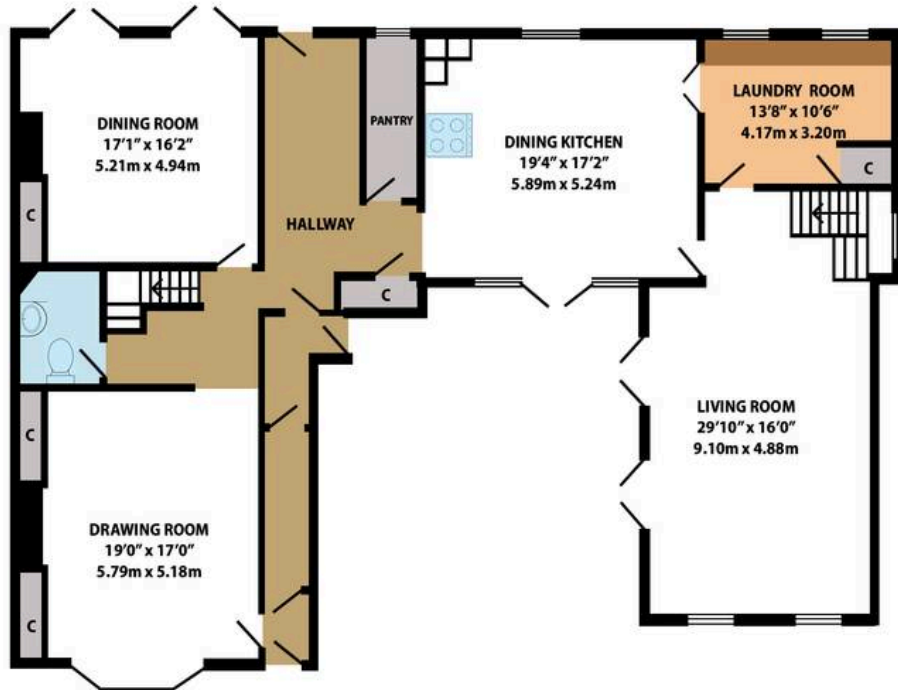
2 Parking Spaces

Rear parking on the property with space for 2 cars





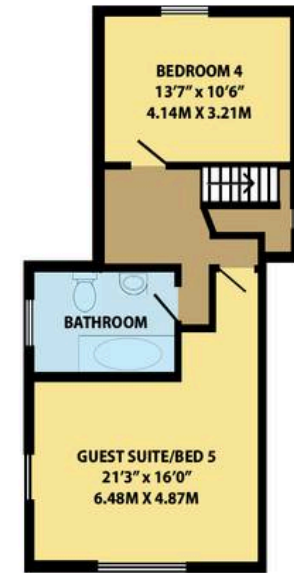
GROUND FLOOR



FIRST FLOOR



FIRST FLOOR



ST. CHAD. BARROW-UPTON-HUMBER, DN19 7AU

TOTAL FLOOR AREA : 3417 sq.ft. (317.5 sq.m.) approx.

Whilst every attempt has been made to ensure the accuracy of the floorplan contained here, measurements of doors, windows, rooms and any other items are approximate and no responsibility is taken for any error, omission or mis-statement. This plan is for illustrative purposes only and should be used as such by any prospective purchaser. The services, systems and appliances shown have not been tested and no guarantee as to their operability or efficiency can be given.

Made with Matterport 2025



Wigwam

Block A, Unit 7B, Flemingate, Beverley - HU17 0NQ

01482505152 • hello@wigwamhomes.co.uk • www.wigwamhomes.co.uk