



Warren Mews, W1T

£2,250,000

Dexters



Warren Mews, W1T

A bright contemporary freehold house in turn key condition. Located in Warren Mews, an enchanting stone-paved retreat framed by greenery creating a picturesque spot in the heart of the city.

Arranged over four floors and features attractive wide plank light wood floors, venetian plaster and bespoke joinery. The ground floor kitchen - dining room has folding doors opening to the mews providing semi 'al fresco' dining. The lower floor is occupied by a double bedroom with en suite bathroom and dressing area. Additionally there is a guest cloakroom. The first floor has a reception room with two large windows overlooking the mews and bespoke display shelving. The main bedroom with en suite bathroom is located on the second floor.

Accessible to the amenities of the West End and Regents Park. Local stations include Warren Street, Great Portland Street and Goodge Street stations. The main line terminals of Euston and Kings Cross are close by.

Features

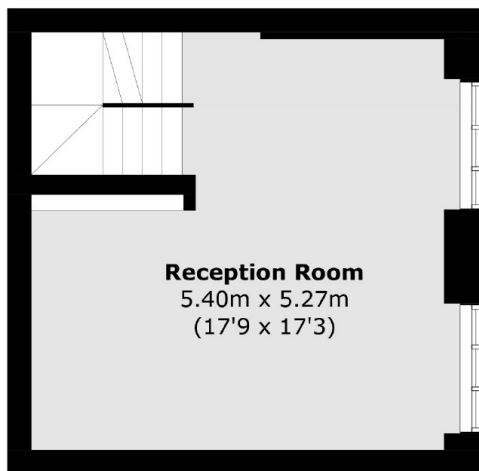
- Freehold House
- Attractive Mews Location
- Two En Suite Bedrooms
- Kitchen - Dining Room
- Reception Room
- Bright Westerly Facing Aspect



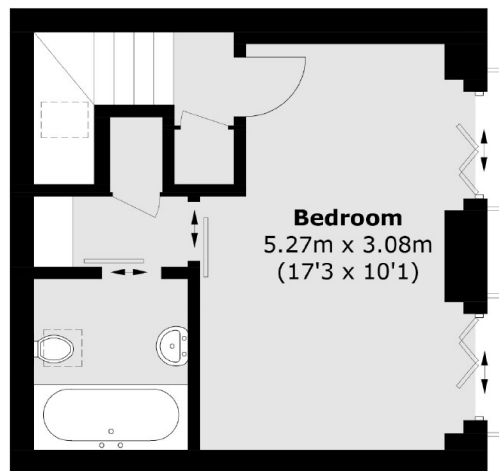




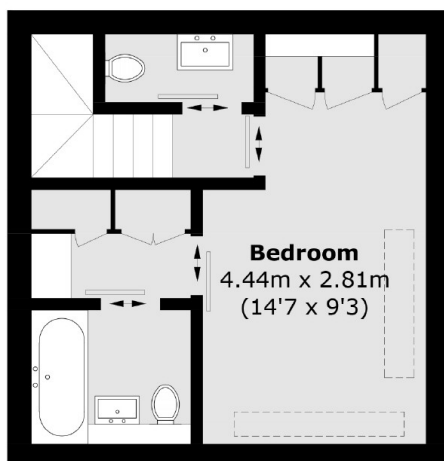
Warren Mews, London, W1T



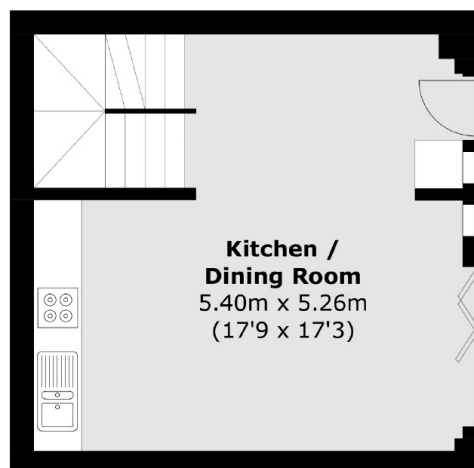
First Floor



Second Floor



Basement



Ground Floor

Total area (approx.): 111.7 sq. m (1,202.3 sq. ft)
(Including Basement)