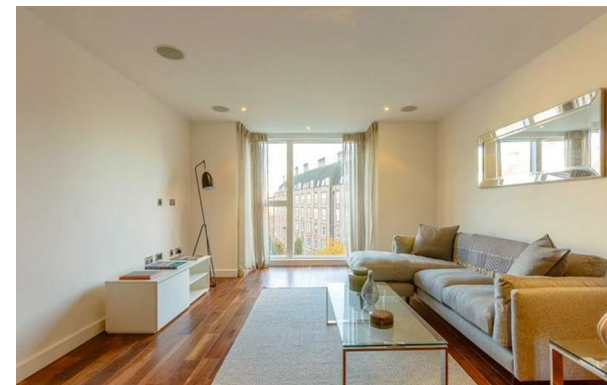




CHASE APARTMENTS
LONDON



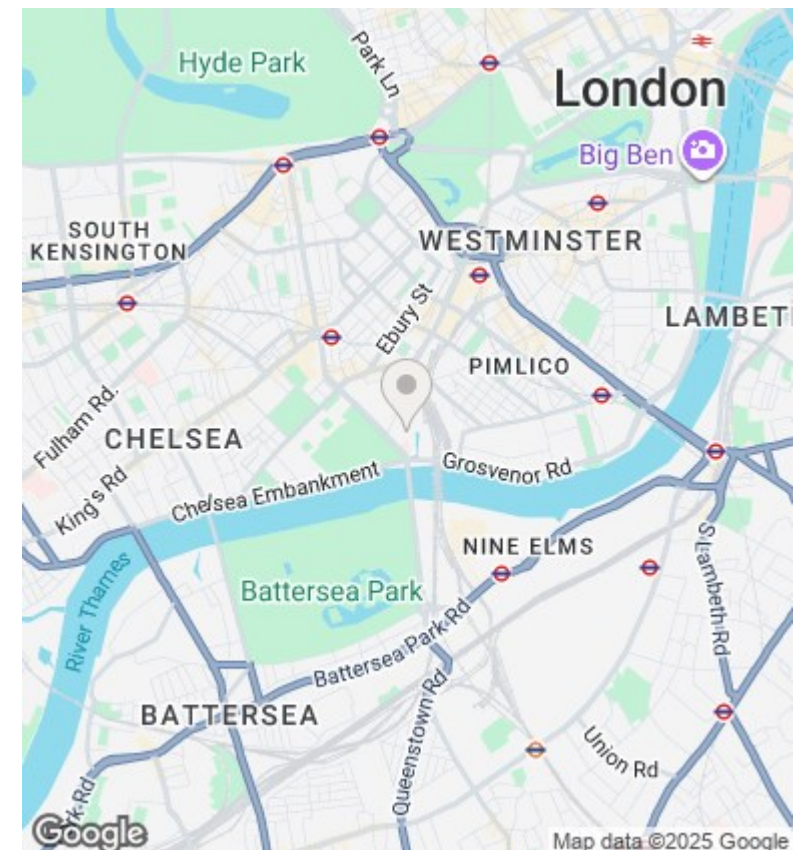
Moore House, Gatliff Road, Grosvenor Waterside SW1W 8DT

£735,000

- 24H CONCIERGE
- WALKING DISTANCE TO SLOANE SQUARE, KINGS ROAD , BELGRAVIA , KNIGHTSBRIDGE
- WALKING DISTANCE TO TUBE STATIONS SLOANE SQUARE AND VICTORIA
- MOMENTS AWAY FROM BATTERSEA PARK
- VIDEO VIEWING AVAILABLE
- GYM AND SPA
- ESW1 AVAILABLE
- UNDER FLOOR HEATING
- ON SITE FOOD SHOP AND RESTAURANT
- REFURBISHED

Grosvenor Waterside, 32 Gatliff Road, Belgravia, London, SW1W 8QN
02077225022

<http://www.chaseapartments.com/>



Viewings

Viewings by arrangement only.
Call 02077225022 to make an appointment.

Council Tax Band

F

EPC Rating:

B

| Energy Efficiency Rating | | |
|---|---------|-------------------------|
| | Current | Potential |
| Very energy efficient - lower running costs | | |
| (92-plus) A | | |
| (81-91) B | 81 | 83 |
| (69-80) C | | |
| (55-68) D | | |
| (39-54) E | | |
| (21-38) F | | |
| (1-20) G | | |
| Not energy efficient - higher running costs | | |
| England & Wales | | EU Directive 2002/91/EC |