

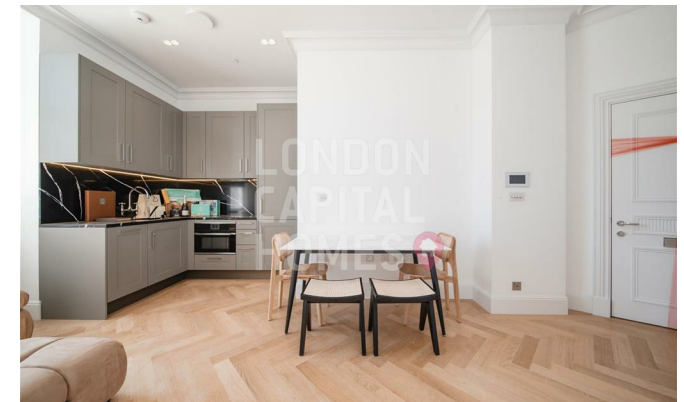


Millbank Residence, 9 Millbank

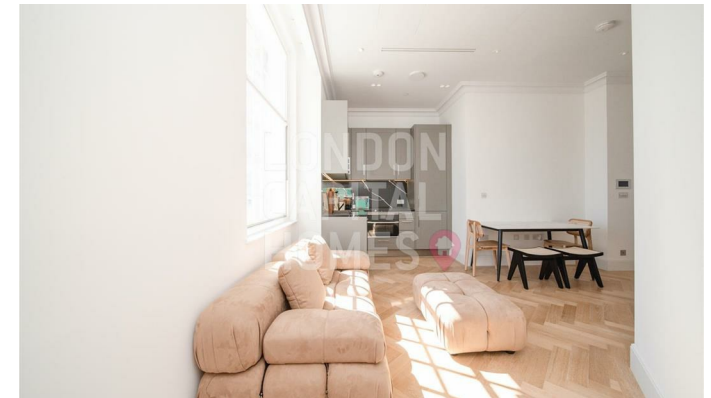
, London SW1P 3AN

- Spacious and elegantly designed 1B1B apartment
 - Comfort cooling
- Residents' Gym & Swimming Pool
- Spa, Sauna & Treatment Rooms
- EPC-B
- Open-plan kitchen
- 24-Hour Concierge
- Cinema Room
- Moments from Westminster, St James's Park & Victoria stations
- CTB-E

£3,400 Per Month



Local Authority **Westminster**
Council Tax Band **E**
EPC Rating **C**



London Office Office
Spaces Victoria, 25 Wilton Road, Pimlico,
London, SW1V 1LW

Contact
020 3084 3094
XL@londonvictoriagroups.co.uk
www.londonvictoriagroups.co.uk

Agents Note: Whilst every care has been taken to prepare these particulars, they are for guidance purposes only. All measurements are approximate and for general guidance purposes only and whilst every care has been taken to ensure accuracy, they should not be relied upon and potential buyers/tenants are advised to recheck the measurements.