



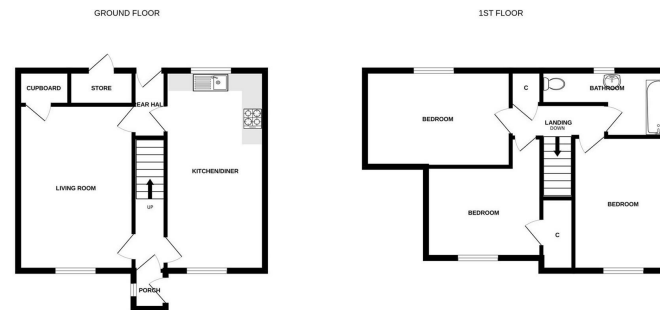
**38 Wrightfield
Park, Maryburgh,
Dingwall,
Highland, IV7
8ER**

Asking Price
£145,000



This spacious three-bedroom mid-terraced villa is located in the peaceful village of Maryburgh and offers an excellent opportunity for first-time buyers, families, or those seeking an investment property. The bright and airy lounge features a front facing window overlooking the enclosed garden, creating a welcoming living space. The kitchen/diner includes an electric cooker and extractor, with a freestanding fridge/freezer and washing machine. There is ample room for a dining table and four chairs, and access to the rear garden is provided via the rear vestibule. Upstairs, the property offers two generous double bedrooms and a single bedroom, all benefiting from built in double wardrobes. Additional storage is available in the hallway cupboard, a large under stair cupboard, and a further cupboard accessed from the lounge. The family bathroom, complete with electric shower, completes the accommodation. The home benefits from double glazing and gas fired heating throughout. Both the front and rear gardens are fully enclosed, with the rear garden featuring a large timber shed for extra storage. Communal parking is available to the front of the property.

- Spacious 3 bedroom mid terraced villa
- Front & rear gardens with large timber shed, communal parking
- Close to local amenities and nearby Dingwall
- Lounge, Kitchen /diner, 3 double bedrooms, bathroom
- Ideal family home, first time buyer or investment property
- EPC Band D



Extras: Add text here

Services: Add text here

Council Tax: B

Floor Area: 968.75 sq ft

Date of Entry: Add text here

Viewing: Don't delay – get in touch with Tailormade Moves today to arrange a viewing

The Greenhouse Beechwood
Business Park
Inverness
Highland
IV2 3BL

E:
info@tailormademoves.co.uk
T: 01463 233218

