



13 Ellisgill Court, Heelands

£175,000 Leasehold

Chain free and ready to move into • Off-road parking • Separate kitchen • Bright living room with private balcony • Two spacious double bedrooms • Low service charges, ideal for first-time buyers or investors

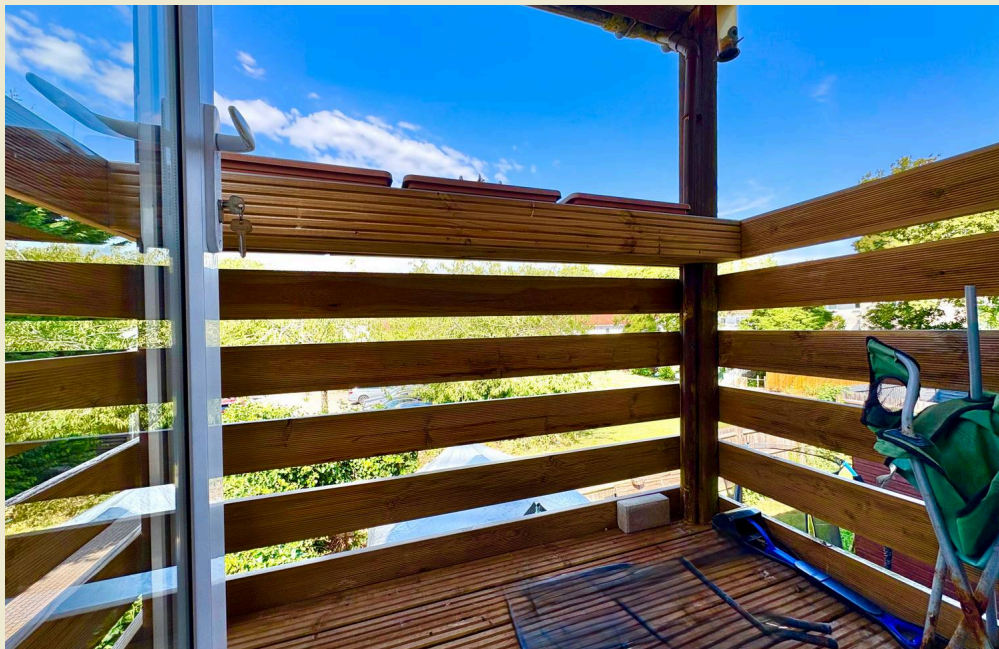


Council Tax band: A

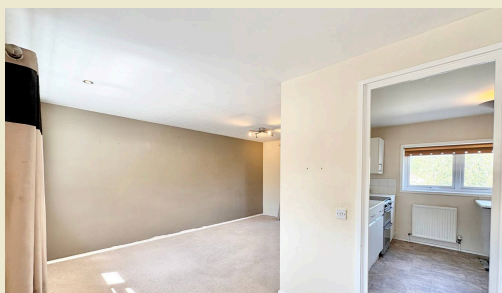
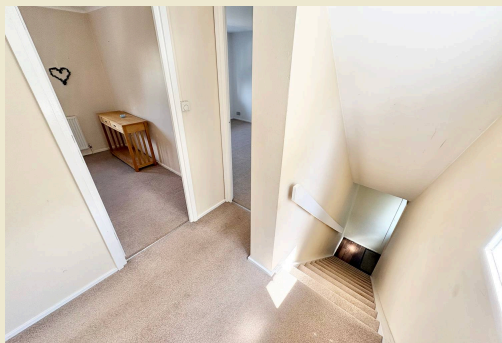
Tenure: Leasehold

EPC Energy Efficiency Rating: C

EPC Environmental Impact Rating: C



- › Chain free and ready to move into
- › Off-road parking
- › Separate kitchen
- › Bright living room with private balcony
- › Two spacious double bedrooms
- › Low service charges, ideal for first-time buyers or investors



You can include any text here. The text can be modified upon generating your brochure.

