



WEST ROAD, ST GEORGE'S HILL

Weybridge, KT13



AN EXCEPTIONAL PRIVATE RESIDENCE.

Where timeless architecture, exquisite craftsmanship and contemporary luxury come together to create an exceptional home in the heart of St George's Hill.

			EPC
6	6	4	B

Local Authority: Elmbridge Borough Council

Council Tax band: H

Tenure: Freehold



DUNMORE

Behind its elegant brick façade and columned portico, Dunmore opens into a magnificent double-height entrance hall. Marble chequered flooring in Carrara and Grigio Carnico, statement lighting and a sweeping staircase immediately set the tone: this is a house of distinction, created for both grand entertaining and effortless daily living. The principal reception rooms have been conceived with scale in mind, flowing seamlessly from one space to the next. The formal drawing room is expansive and beautifully appointed, while the family room and bar area offer relaxed sophistication. At the heart of the home lies a spectacular kitchen, breakfast and day room - The Officine Gullo kitchen, made in Florence and the pinnacle of Italian excellence, is complimented by book-matched Calacatta Viola marble also used to frame the fireplace. This statement space with dramatic Calacatta Viola marble island is flooded with light by and full-height south west facing glazing opening to the gardens.



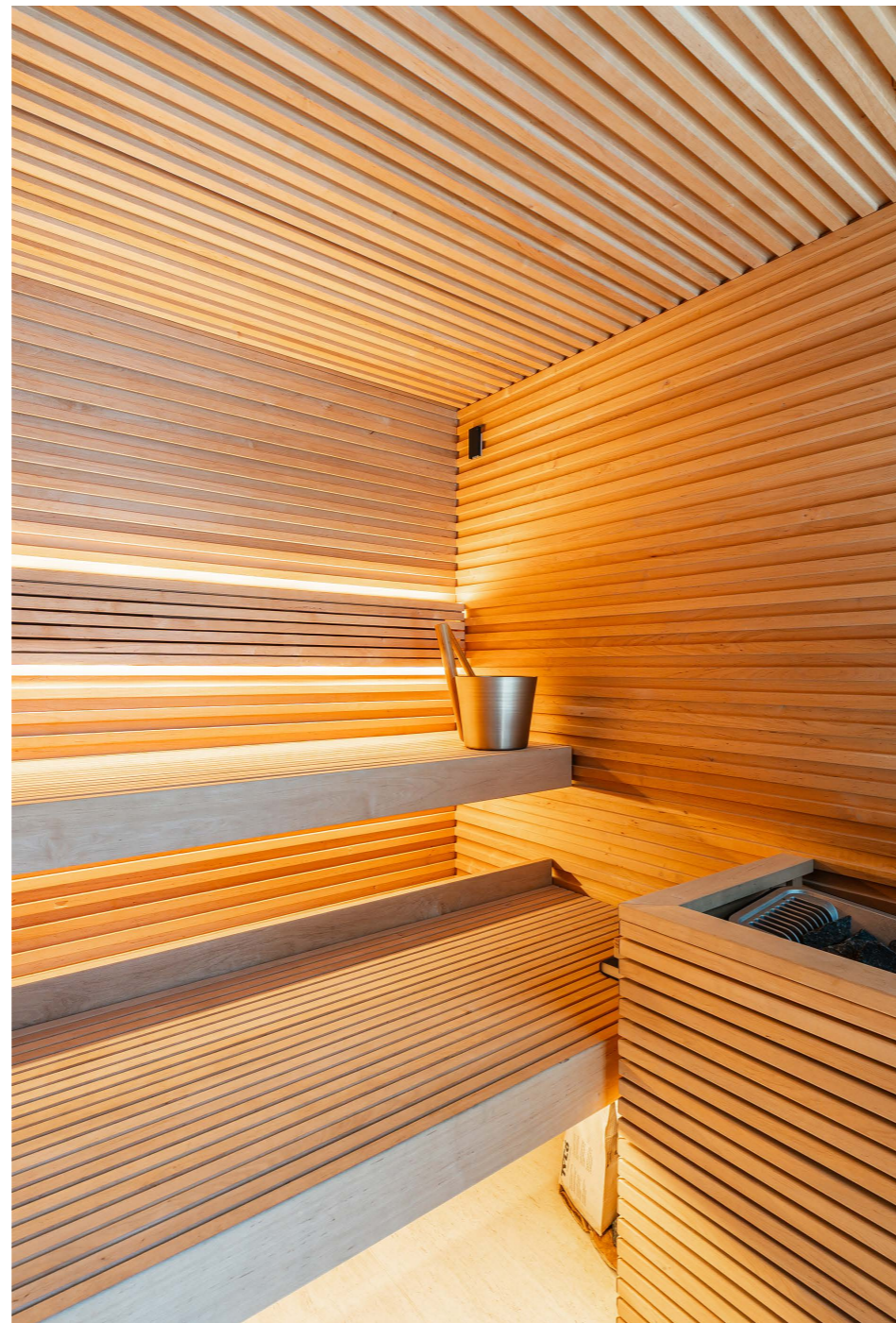


This area is designed for everyday living and large-scale entertaining, filled with light and beautifully connected to the outdoors.

The main reception areas are decadent, and interior designed to create entertaining spaces for dining and formal living. There is a purpose built bar with Pietra grey honed marble, crested by the house crest of the magnificent bonsai tree which takes pride of place in the manicured gardens.

Dunmore offers an outstanding private leisure suite. A stunning indoor pool with skylight glazing and sliding doors opens to the gardens, creating a tranquil all-season retreat. Adjacent, a fully equipped gym and sauna elevate the wellness experience, while dedicated plant and pool rooms ensure technical excellence discreetly behind the scenes.

A luxurious cinema room provides the perfect setting for private screenings.





Across the first floor are five beautifully proportioned bedroom suites. The principal suite is a sanctuary of indulgence, featuring a spacious bedroom with private balcony views over the gardens, generous dressing rooms and a sophisticated bathroom suite. Further suites offer exceptional comfort for family and guests, each with bespoke detailing and elegant finishes. A separate annexe provides ideal accommodation for staff, guests or multi-generational living.

The gardens have been designed to create a sense of privacy, tranquillity and connection to nature. They are centred on the most dramatic bonsai tree, framed by landscaped areas and the inspiration for the homes logo. Maintained by Bongardia landscapers the gardens are truly exceptional. Full-width terraces extend the living spaces outdoors, leading to manicured lawns, structured planting and mature woodland beyond. Large sliding doors from the principal rooms open directly onto the landscaped grounds, framing beautiful vistas and flooding the interiors with natural light.

Homes of this calibre are seldom available.



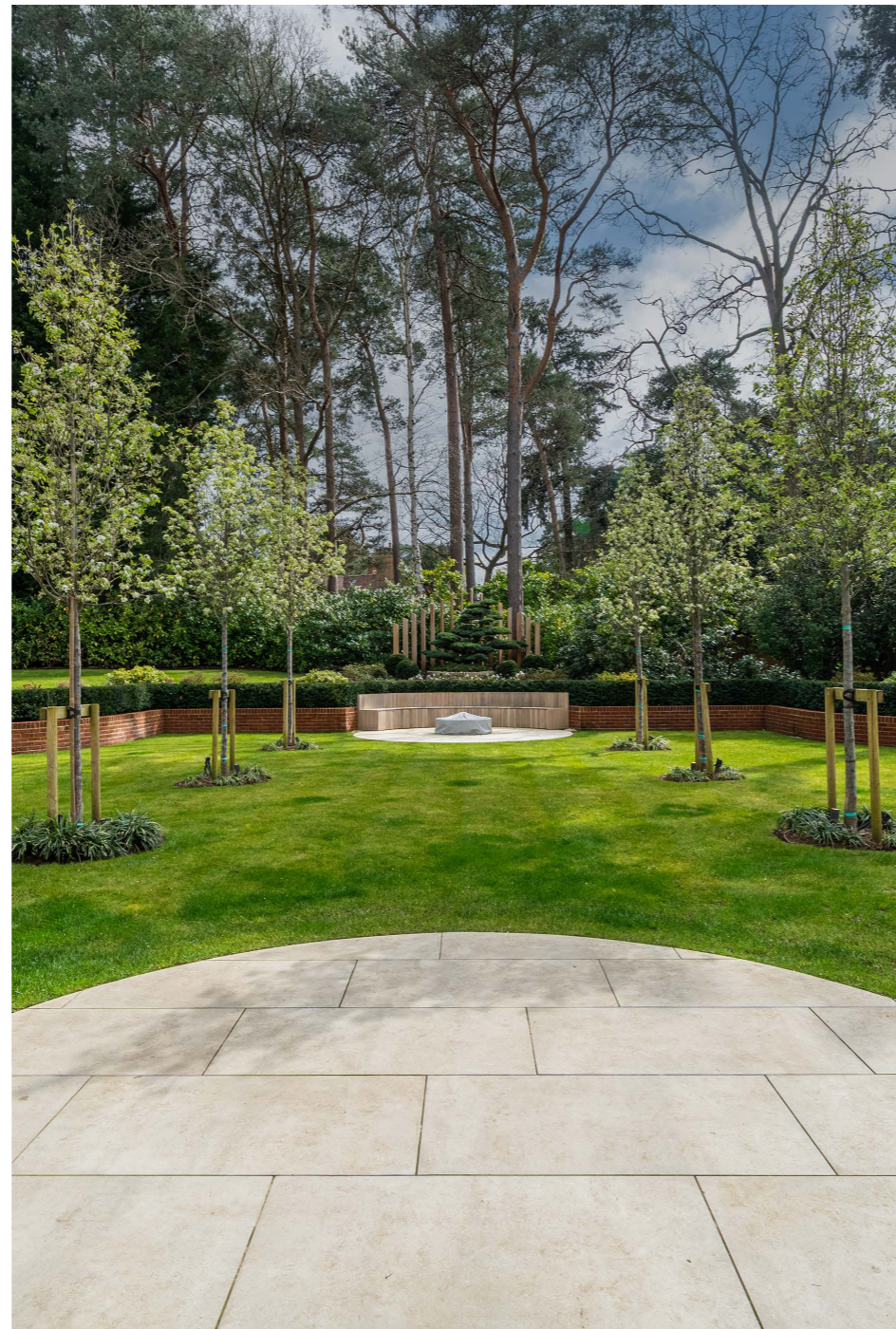


LOCATION

St George's Hill is set on approximately 900 acres and features a private championship-standard 18-hole golf course, 9-hole course and a separate private tennis and squash club.

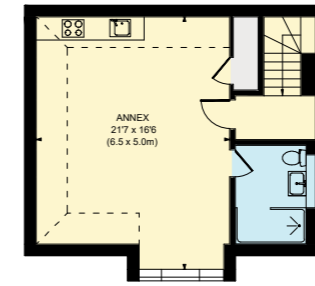
Close to the centre of Weybridge, the greens and fairways of St George's Hill Golf Club meander through the Estate, whilst the Lawn Tennis, Squash and Croquet Club offers luxurious fitness and an indoor swimming pool. The Estate provides controlled gated security and privacy, offering an ideal community location.

The A3 is a short driving distance giving access to London and the M25 which, in turn, leads to the national motorway network as well as Heathrow and Gatwick airports. Weybridge and Walton mainline rail stations are conveniently located nearby.

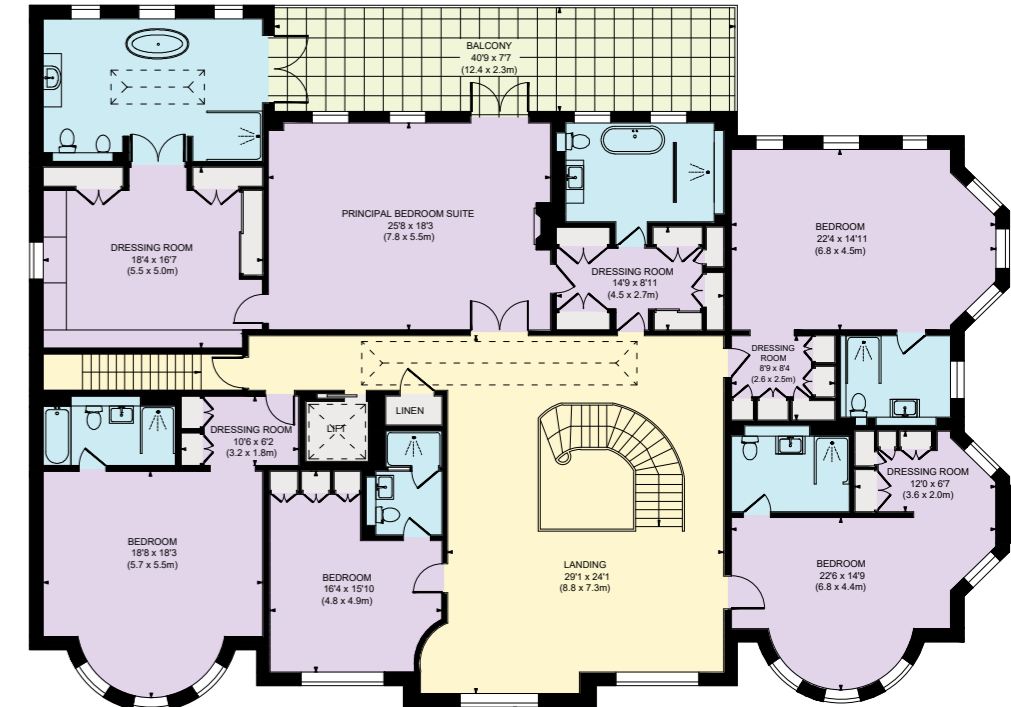




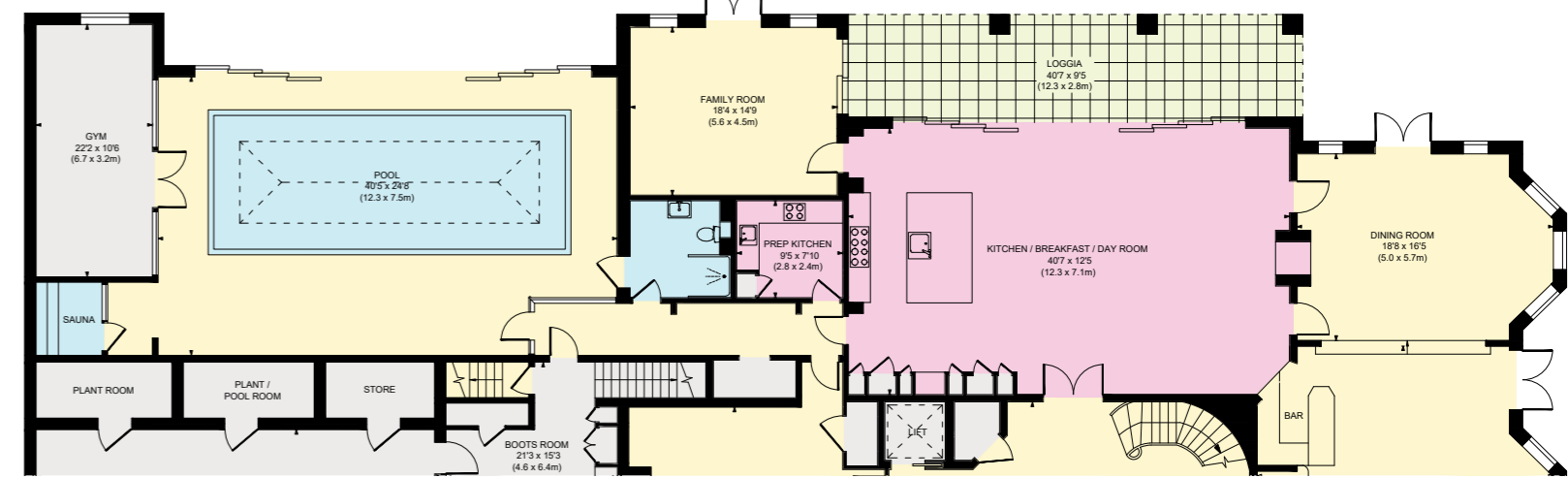
Ground Floor 6,618 sq. ft / 614.80 sq. m
 First Floor 3,967 sq. ft / 368.50 sq. m
 Annex 437 sq. ft / 40.60 sq. m
 Total 11,021 sq. ft / 1023.9 sq. m



ANNEXE



FIRST FLOOR



This plan is for layout guidance only. Not drawn to scale unless stated. Windows and door openings are approximate. Whilst every care is taken in the preparation of this plan, please check all dimensions, shapes and compass bearings before making any decisions reliant upon them. (ID767266)

We would be delighted
to tell you more.

Stuart Cole
+44 20 7861 5101
stuart.cole@knightfrank.com

Knight Frank National Country Department
55 Baker Street
London, W1U 8AN

Tom Hunt
+44 20 8106 1409
tom.hunt@knightfrank.com

Knight Frank Weybridge
20 High Street
Weybridge, KT13 8AB

[knightfrank.co.uk](https://www.knightfrank.co.uk)

Your partners in property

1. Particulars: These particulars are not an offer or contract, nor part of one. You should not rely on statements given by Knight Frank in the particulars, by word of mouth or in writing ("information") as being factually accurate about the property, its condition or its value. Neither Knight Frank nor any joint agent has any authority to make any representations about the property, and accordingly any information given is entirely without responsibility on the part of Knight Frank. 2. Material Information: Please note that the material information is provided to Knight Frank by third parties and is provided here as a guide only. While Knight Frank has taken steps to verify this information, we advise you to confirm the details of any such material information prior to any offer being submitted. If we are informed of changes to this information by the seller or another third party, we will use reasonable endeavours to update this as soon as practical. 3. Photos, Videos etc: The photographs, property videos and virtual viewings etc. show only certain parts of the property as they appeared at the time they were taken. Areas, measurements and distances given are approximate only. 4. Regulations etc: Any reference to alterations to, or use of, any part of the property does not mean that any necessary planning, building regulations or other consent has been obtained. A buyer must find out by inspection or in other ways that these matters have been properly dealt with and that all information is correct. 5. Fixtures and fittings: A list of the fitted carpets, curtains, light fittings and other items fixed to the property which are included in the sale (or may be available by separate negotiation) will be provided by the Seller's Solicitors. 6. VAT: The VAT position relating to the property may change without notice. 7. To find out how we process Personal Data, please refer to our Group Privacy Statement and other notices at <https://www.knightfrank.com/legals/privacy-statement>.

Particulars dated May 2024. Photographs and videos dated May 2024. All information is correct at the time of going to print. Knight Frank is the trading name of Knight Frank LLP. Knight Frank LLP is a limited liability partnership registered in England and Wales with registered number OC305934. Our registered office is at 55 Baker Street, London W1U 8AN. We use the term 'partner' to refer to a member of Knight Frank LLP, or an employee or consultant. A list of members names of Knight Frank LLP may be inspected at our registered office. If you do not want us to contact you further about our services then please contact us by either calling 020 3544 0692, email to marketing.help@knightfrank.com or post to our UK Residential Marketing Manager at our registered office (above) providing your name and address.