

OH



Heathlands Place, Ascot
Guide Price £550,000

OSBORNE HEATH



On the ground floor is a modern kitchen with dining space, living and dining room and a downstairs WC.

The first floor has two double bedrooms and a modern bathroom.

On the second floor is the principal bedroom with built-in wardrobes and an en suite shower room.

This property comes with two allocated parking spaces and a west facing garden with gated access.

Heathlands Place is off Priory Road in the village of Chavey Down, Ascot. Nearby are a number of popular schools including Ascot Heath Infant and Junior School, Charters, St Joseph's Primary School and Ranelagh Secondary School. The nearest train stations are Ascot and Martins Heron where services run to London, Reading and Guildford. By road Ascot is convenient for the M3, M4, M25 and Heathrow Airport. Nearby points of interest include Ascot Racecourse, Legoland, Sunningdale Golf Club, Wentworth Club, Windsor Castle and Windsor Great Park.

Heathlands Place

Ascot

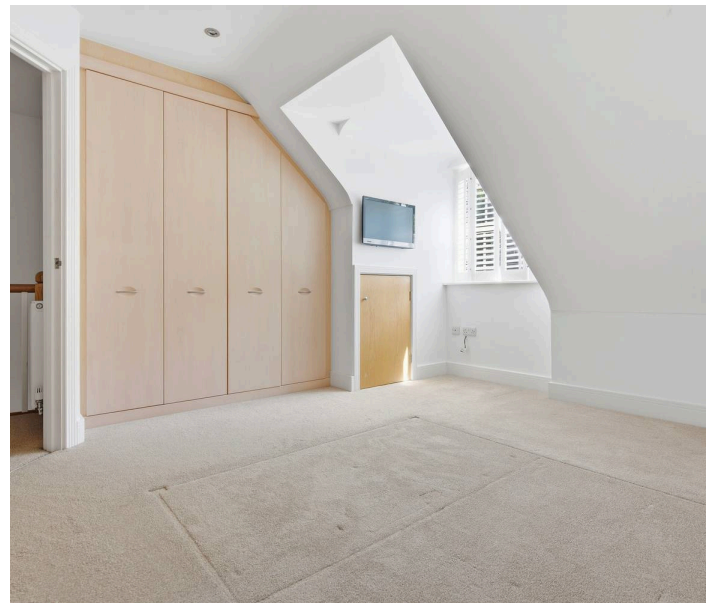
- Three Double Bedrooms
- Two Bathrooms
- Modern Kitchen
- West Facing Garden
- Allocated Parking
- No Onward Chain

Council Tax band: E

Tenure: Freehold

EPC Energy Efficiency Rating: C

EPC Environmental Impact Rating: C



APPROXIMATE FLOOR AREA
House - 106.93 sq m - 1151 sq ft
(Gross Internal Area)



NOT TO SCALE
This plan is for illustration purposes only



Ground Floor



First Floor



Second Floor

OSBORNEHEATH.CO.UK

This floor plan has been created by Property Shoot Ltd following the RICS code of measuring and is for indicative guidance only. Whilst every attempt has been made to ensure the accuracy of the floor plan contained here, measurements of doors, windows and rooms are approximate and no responsibility is taken for any error, omission or misstatement.

Details shown on this floorplan, including all measurements, areas and proportions cannot be guaranteed by either the provider or estate agency and should not be relied upon.