



# Ontario Tower

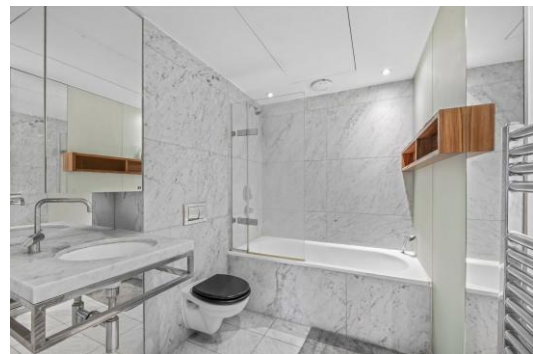
4 Fairmont Avenue, E14

Guide Price £230,000

One double bedroom apartment on the 14th floor, with 24-hour concierge, residents' gym, swimming pool, sauna & steam room on-site. The apartment boasts floor-to-ceiling windows with stunning views of the River Thames & Canary Wharf skyline.

FOR SALE by Allsop Auction –  
29th/30th July 2026

**CHESTERTONS**



# Ontario Tower

4 Fairmont Avenue, E14

- Spacious One Bedroom in Ontario Tower.
- 14th Floor including a bedroom, bathroom, reception and kitchen.
- 24 Hour Concierge.
- Residents' Gym and Pool.
- Subject to an Assured Periodic Tenancy.
- The property is situated on Fairmont Avenue, to the east of its junction with Biscayne Avenue
- Shops and amenities are available to the north along Poplar High Street, further extensive shops can be located within the O2 Arena Shopping Centre.
- Blackwall Station (DLR) is approximately 0.4 miles to the north, Canary Wharf Station (Elizabeth Line) is also approximately 0.7 miles to the west.
- A102 is readily accessible providing access onto the A12 and in turn the M25 motorway
- Jamestown Way Waterfront Park is nearby.
- Lease with approximately 974 years remaining.
- shops and amenities are available to the north along Poplar High Street, further extensive shops can be located within the O2 Arena Shopping Centre.
- GIA approximately 58.8 sq m (633 sq ft).



Located in the architecturally unique and award-winning Ontario Tower, E14, is this large & luxurious one double bedroom apartment on the 14th floor, with 24-hour concierge, residents' gym, swimming pool, sauna & steam room on-site.

The apartment boasts floor-to-ceiling windows with stunning views of the River Thames & Canary Wharf skyline. Only a short walk into the centre of Canary Wharf and only 5 minutes' walk to Blackwall DLR station.

INVESTMENT- Leasehold Self Contained Flat

**Tenure:** Leasehold 974 years 6 months

**Service Charge:** £8,002 pa approx.

**Ground Rent:** £400

**Local Authority:** Tower Hamlets

**Council Tax Band:** E

Score	Energy rating	Current	Potential
92+	A		
81-91	B		
69-80	C	79 C	80 C
55-68	D		
39-54	E		
21-38	F		
1-20	G		

### *Chestertons Canary Wharf & Greenwich Sales*

Harbour Island

28 Harbour Exchange Square

London

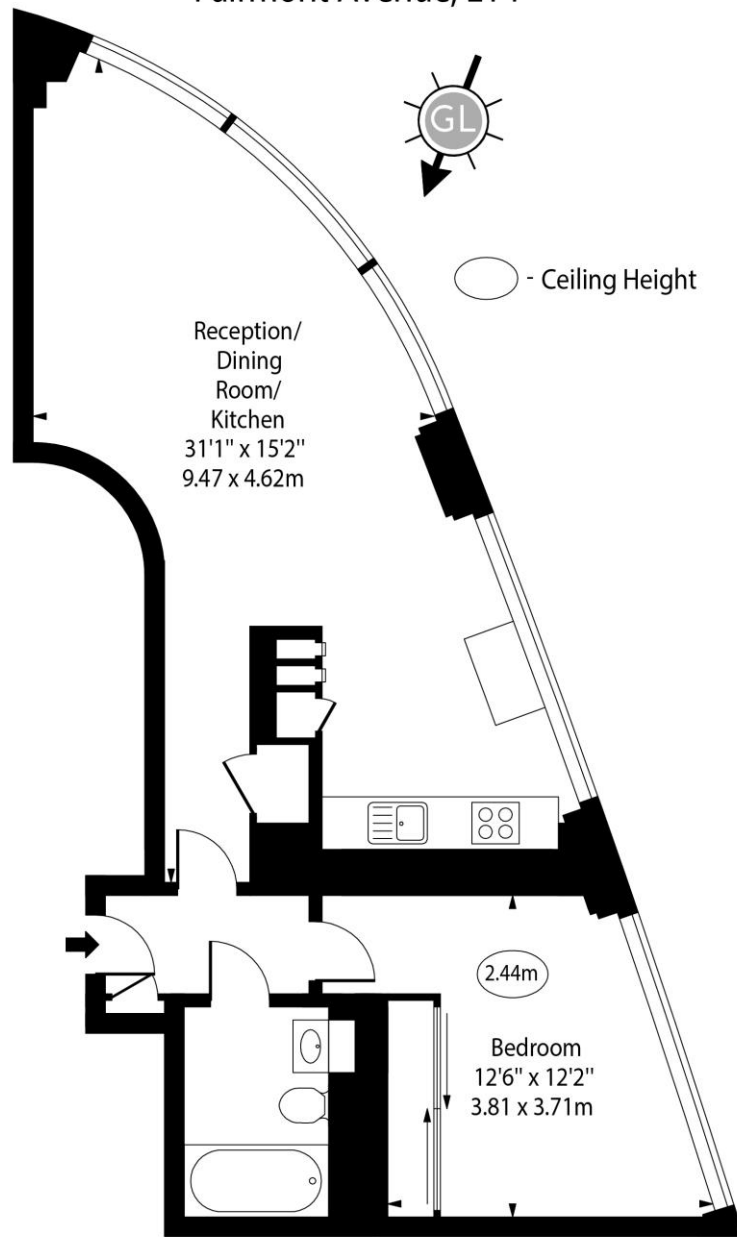
E14 9GE

canarywharf@chestertons.co.uk

020 7510 8300

chestertons.co.uk

Ontario Tower,  
Fairmont Avenue, E14



Fourteenth Floor

Approx Gross Internal Area      633 Sq Ft - 58.80 Sq M

Every attempt has been made to ensure the accuracy of the floor plan shown. However, all measurements, fixtures, fittings, and data shown are approximate interpretations and for illustrative purposes only. Measured according to the RICS. Not To Scale.

[www.goldlens.co.uk](http://www.goldlens.co.uk)

Ref. No. 029989E

