



Calladine Close  
Sutton-In-Ashfield

burchell  
edwards

# Calladine Close Sutton-In-Ashfield NG17 1NQ

for sale offers over  
**£400,000**



## Property Description

Located within a quiet cul-de-sac on Calladine Close, Sutton-in-Ashfield, this four-bedroom detached property offers spacious and well-balanced accommodation, ideally suited to family living.

To the ground floor, the property comprises an entrance hall, cloakroom/WC, lounge with French doors opening onto the rear garden, a separate dining room, and a fitted kitchen/breakfast room with integrated appliances and breakfast bar, alongside a useful utility room.

To the first floor are four generously sized bedrooms, including a principal bedroom with fitted wardrobes and en-suite shower room, together with a family bathroom.

Externally, the property benefits from a driveway providing off-street parking leading to a detached double garage with power and lighting. The enclosed rear garden features a patio seating area, lawn and established borders.

The property is well positioned for nearby walks and trails, including a pleasant pond area, offering outdoor space ideal for families and leisure.

## Entrance Hall

Laminate flooring, double glazed window to the front, wall mounted radiator and fitted wardrobes providing storage.

## Cloakroom / Wc

Fitted with a ceramic wash hand basin and low-level WC, tiled splashback, wall mounted radiator and double glazed window to the front.

## Lounge

Laminate flooring with feature fireplace, wall mounted radiator, double glazed window to the front and UPVC French doors opening onto the rear garden.

## Dining Room

Laminate floor, double glazed window to front, wall mounted radiator

## Kitchen / Breakfast Room

Fitted with matching wall and base units with inset sink and drainer. Integrated appliances include a dishwasher, undercounter fridge freezer, induction hob with cooker hood, double oven and microwave. Breakfast bar seating, tiled splashbacks, spotlights, laminate flooring, double glazed window to the rear and UPVC door to the side.

## Utility Room

Fitted with base units and inset stainless steel sink and drainer, wall mounted radiator, stone tiled flooring and UPVC door to the side.

## First Floor Landing

Carpeted landing with double glazed window to the rear, wall mounted radiator, airing cupboard and access to loft space.

## Bedroom One

Carpeted flooring with two fitted wardrobes, wall mounted radiator, double glazed window to the side and French patio doors opening onto a balconette to the rear.

## En-Suite

Comprising a walk-in shower, ceramic WC and wash hand basin in vanity unit. Fully tiled walls and flooring, wall mounted towel radiator, spotlights and double glazed window to the side.

## Bedroom Two

Carpeted flooring, fitted wardrobes, wall mounted radiator and double glazed window to the rear.

## Bedroom Three

Carpeted flooring with fitted wardrobes, wall mounted radiator and double glazed window to the front.

## Bedroom Four

Laminate flooring, wall mounted radiator and double glazed window to the front.

## Bathroom

Fitted with a whirlpool bath, ceramic WC and wash hand basin in vanity unit, tiled walls and flooring, wall mounted towel radiator, spotlights and double glazed opaque window to the front.

## Loft Space

Partly boarded.

## Externals

Front

Driveway providing off-road parking leading to a detached garage. Located within a cul-de-sac with a small lawned area, gravel borders and a canopy porch with paved access and decorative planting.

Rear Garden

Enclosed and well maintained, featuring a paved patio seating area with decorative stonework, leading onto a lawn with raised sleeper borders, planted with shrubs and plants. Additional gravel areas and space for outdoor dining and a washing line.

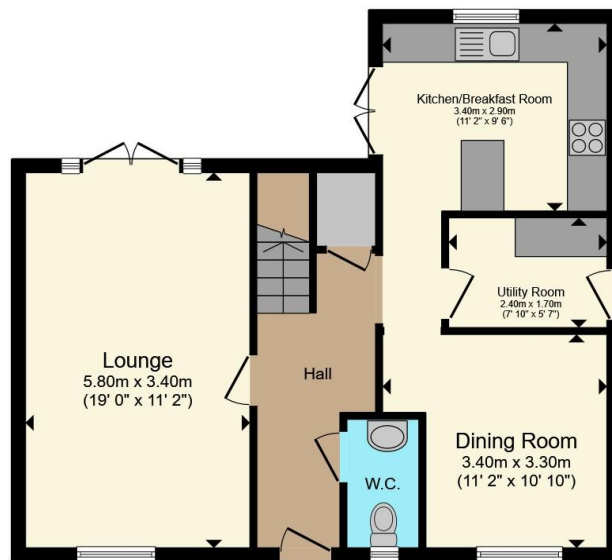
## Garage

Double detached garage with electric up and over door, power, lighting and its own consumer unit.

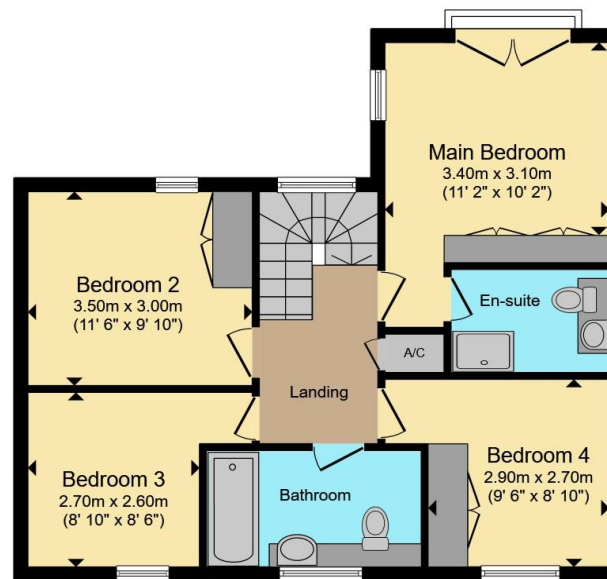








**Ground Floor**



**First Floor**

Total floor area 117.8 m<sup>2</sup> (1,268 sq.ft.) approx

This floor plan is for illustrative purposes only. It is not drawn to scale. Any measurements, floor areas (including any total floor area), openings and orientation are approximate. No details are guaranteed, they cannot be relied upon for any purpose and they do not form part of any agreement. No liability is taken for any error, omission or misstatement. A party must rely upon its own inspection(s). Powered by [www.propertybox.io](http://www.propertybox.io)



To view this property please contact Burchell Edwards on

**T 01623 627727**  
**E [Mansfield@burchelledwards.co.uk](mailto:Mansfield@burchelledwards.co.uk)**

12 Albert Street  
 MANSFIELD NG18 1EB

EPC Rating: C Council Tax Band: D

Tenure: Freehold

**check out more properties at [burchelledwards.co.uk](http://burchelledwards.co.uk)**



1. MONEY LAUNDERING REGULATIONS Intending purchasers will be asked to produce identification documentation at a later stage and we would ask for your co-operation in order that there will be no delay in agreeing the sale. 2. These particulars do not constitute part or all of an offer or contract. 3. The measurements indicated are supplied for guidance only and as such must be considered incorrect. Potential buyers are advised to recheck measurements before committing to any expense. 4. We have not tested any apparatus, equipment, fixtures, fittings or services and it is in the buyers interest to check the working condition of any appliances.

Burchell Edwards is a trading name of Connells Residential which is registered in England and Wales under company number 1489613, Registered Office is Cumbria House, 16-20 Hockliffe Street, Leighton Buzzard, Bedfordshire, LU7 1GN. VAT Registration Number is 500 2481 05.

**See all our properties at [www.burchelledwards.co.uk](http://www.burchelledwards.co.uk) | [www.rightmove.co.uk](http://www.rightmove.co.uk) | [www.zoopla.co.uk](http://www.zoopla.co.uk)**

Property Ref: MFD209711 - 0002