



Cromwell Road, Eccles

Manchester

HILLS

In Excess of £170,000

Cromwell Road

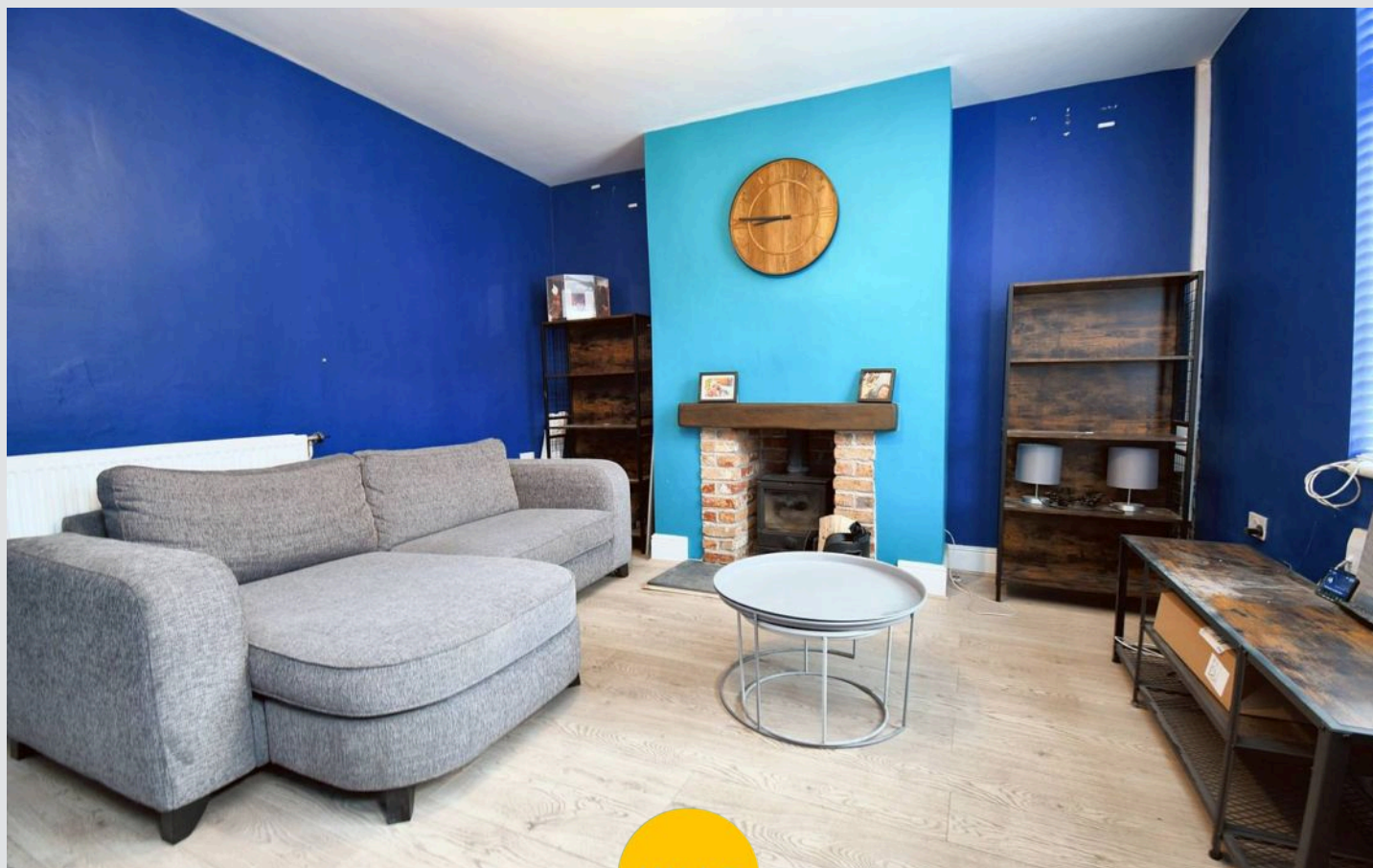
Eccles, Manchester

FANTASTIC TWO BEDROOM TERRACED HOME COMING TO THE MARKET CHAIN FREE! BENEFITTING FROM A SPACIOUS AND RECENTLY FITTED MODERN KITCHEN, TWO DOUBLE BEDROOMS AND A NEWLY FITTED MODERN BATHROOM SUITE!

Council Tax band: A

Tenure: Leasehold

- TWO DOUBLE BEDROOM TERRACED PROPERTY COMING TO THE MARKET CHAIN FREE!
- WITHIN WALKING DISTANCE TO MONTON VILLAGE!
- BRAND NEW MODERN KITCHEN AND BATHROOM!
- SPACIOUS THROUGHOUT
- LOW MAINTENANCE YARD TO THE REAR
- LOG BURNER, GAS CENTRAL HEATED AND DOUBLE GLAZED THROUGHOUT
- PERFECT FOR FIRST TIME BUYERS
- PATRICROFT TRAIN STATION IS APPROX 5 MINUTES WALK AND PROVIDES DIRECT ACCESS INTO MANCHESTER CITY CENTRE!
- WITHIN EASY ACCESS OF EXCELLENT TRANSPORT LINKS INTO SALFORD QUAYS, MEDIA CITY AND MANCHESTER CITY CENTRE



Reception Room

13' 11" x 12' 9" (4.23m x 3.89m)

Kitchen/Diner

13' 9" x 9' 9" (4.19m x 2.98m)

Landing

Shower Room

9' 8" x 6' 10" (2.94m x 2.09m)

Bedroom One

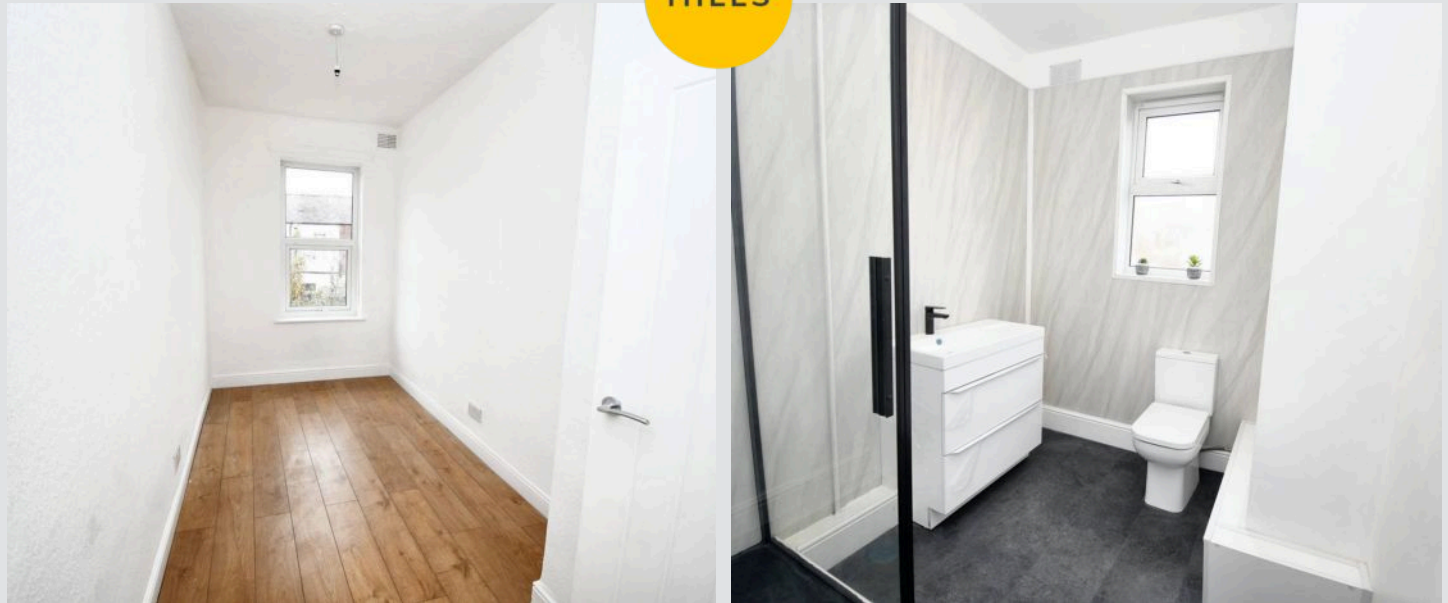
13' 11" x 10' 3" (4.23m x 3.13m)

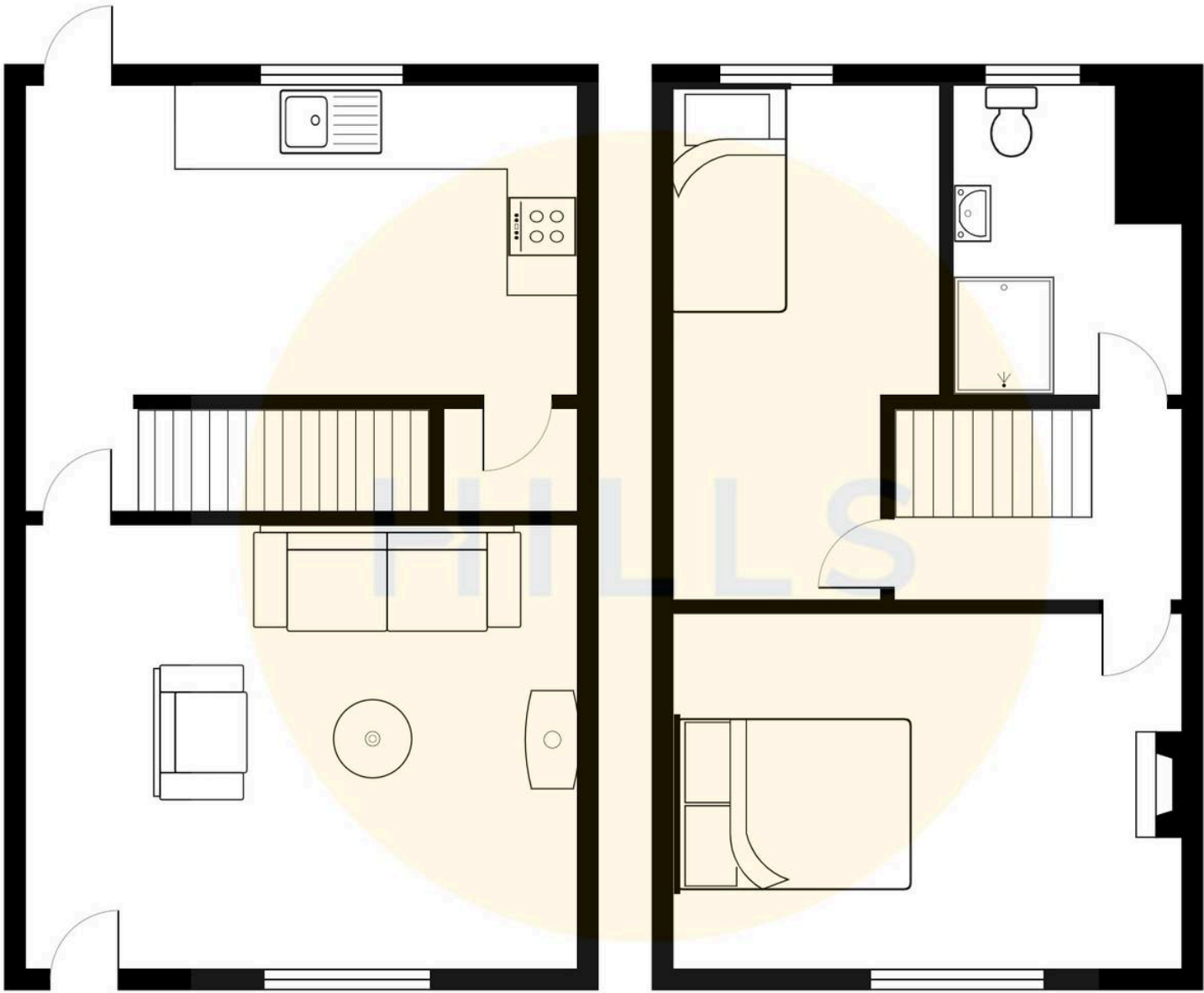
Bedroom Two

15' 7" x 6' 5" (4.75m x 1.95m)



HILLS







Hills | Salfords Estate Agent

Hills Residential, Sentinel House Albert Street - M30 0SS

0161 707 4900

sales@hills.agency

www.hills.agency/



By law, we are required to conduct anti-money laundering checks on all potential buyers and sellers. In line with HMRC guidelines, our trusted partner, Coadjute, will securely manage these checks on our behalf. A non-refundable fee of £45 + VAT per person will apply, and Coadjute will handle the payment. Once an offer is accepted, Coadjute will send a secure link for you to complete the biometric checks. These checks must be completed before we can send the memorandum of sale to all parties. PLEASE NOTE: The Agent has not tested any equipment, fixtures, fittings or services so cannot verify that they are in working order or fit for the purpose. References to the properties tenure are based on information supplied by the seller. You are advised to check the availability of this property before travelling any distance to view. Every effort has been made to ensure these particulars are correct and not misleading but their accuracy is not guaranteed nor do they form part of any contract.