



Cherryneuk Saline Road, Oakley - KY12 9LA

Dunfermline

Offers Over £199,995





home sweet home
estate agents
your local property experts



Cherryneuk Saline Road

Oakley, Dunfermline

Traditional detached 2-bed cottage on half-acre plot with planning for driveway, detached garage, tree-lined grounds, DG, GCH. Scope to extend. Home Report £200,000. Path access only. Council Tax band: D

Tenure: Freehold

EPC Energy Efficiency Rating: D

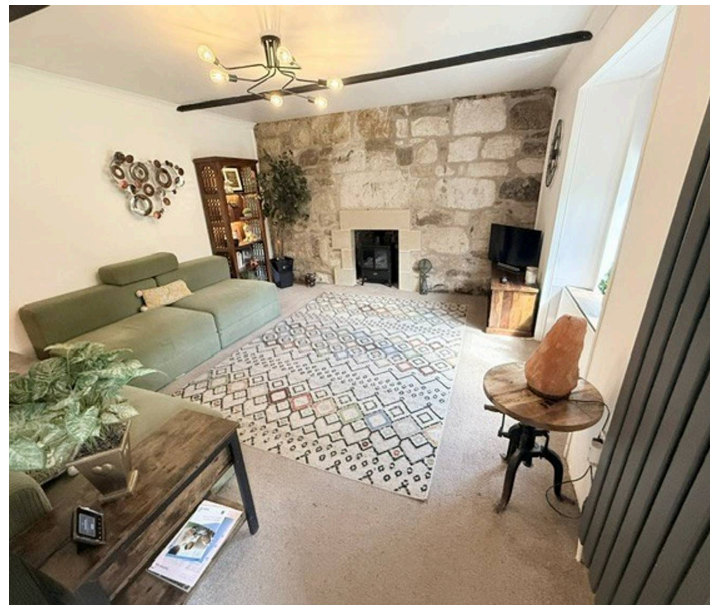
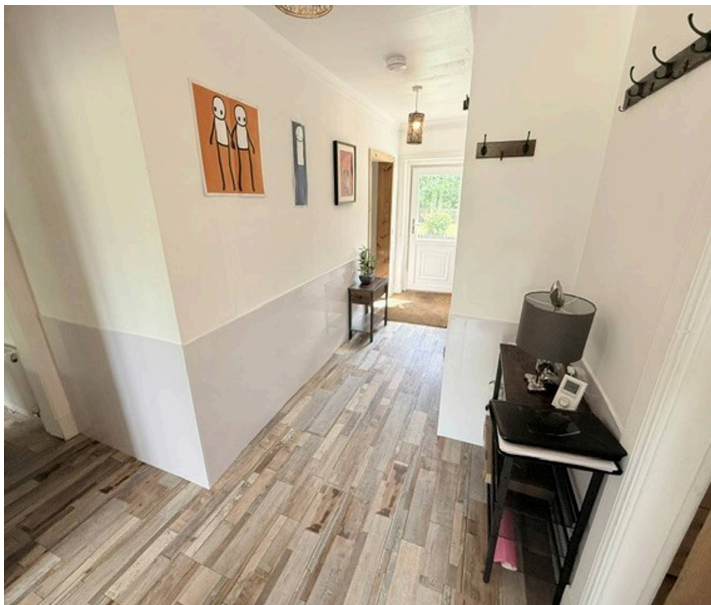
EPC Environmental Impact Rating: D

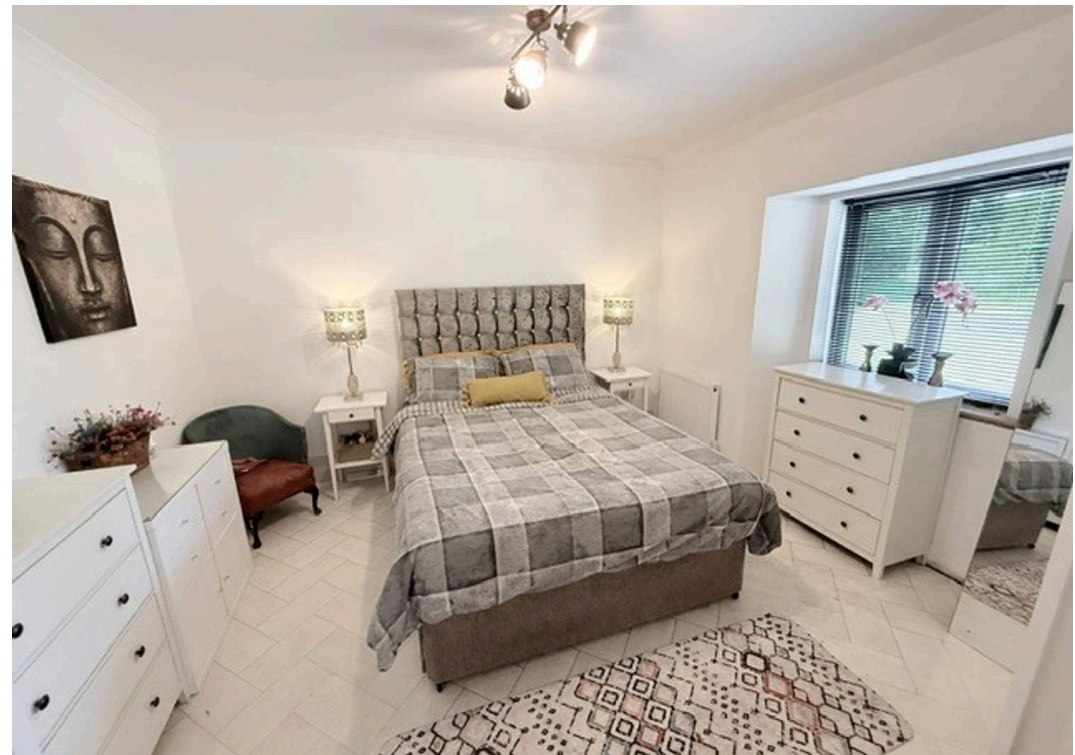
- DETACHED COTTAGE SET WITHIN HALF ACRE PLOT
- FULL PLANNING REF 24/02344/FULL FOR DRIVE
- TWO DOUBLE BEDROOMS
- SITTING ROOM WITH FEATURE STONE WALL
- KITCHEN & APPLIANCES
- MODERN SHOWER-ROOM/WC
- DG- GCH - EPC D
- HOME REPORT £200,000
- DETACHED GARAGE/ STORE
- GENEROUS GROUNDS WITH WOODLAND ASPECT



GARDEN

Aprox half-acre plot

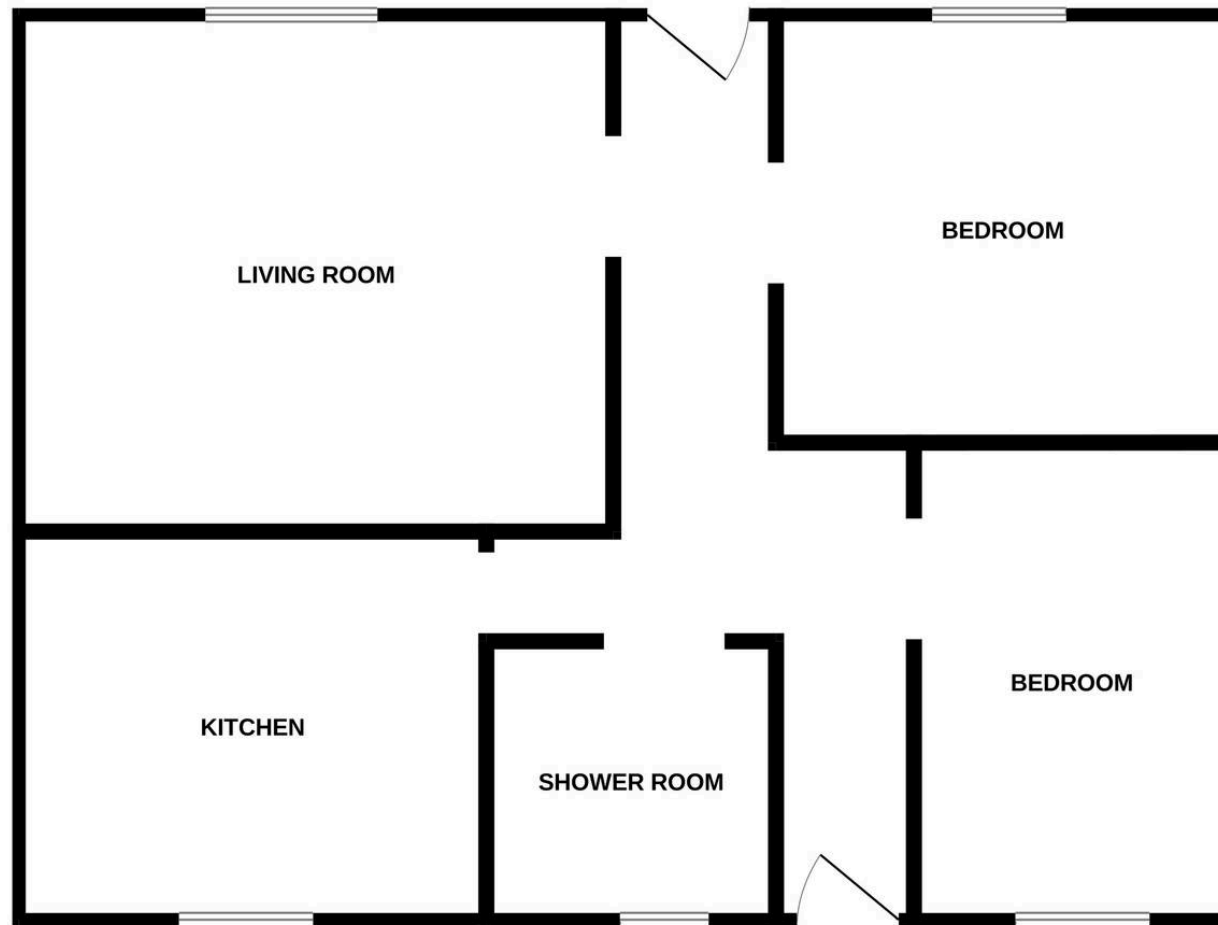




Energy Efficiency Rating		
	Current	Potential
<i>Very energy efficient - lower running costs</i>		
(92+) A		
(81-91) B		
(69-80) C		
(55-68) D	66	80
(39-54) E		
(21-38) F		
(1-20) G		
<i>Not energy efficient - higher running costs</i>		
England, Scotland & Wales		
		EU Directive 2002/91/EC

Environmental Impact (CO ₂) Rating		
	Current	Potential
<i>Very environmentally friendly - lower CO₂ emissions</i>		
(92+) A		
(81-91) B		
(69-80) C		79
(55-68) D	65	
(39-54) E		
(21-38) F		
(1-20) G		
<i>Not environmentally friendly - higher CO₂ emissions</i>		
England, Scotland & Wales		
		EU Directive 2002/91/EC

GROUND FLOOR



Whilst every attempt has been made to ensure the accuracy of the floorplan contained here, measurements of doors, windows, rooms and any other items are approximate and no responsibility is taken for any error, omission or mis-statement. This plan is for illustrative purposes only and should be used as such by any prospective purchaser. The services, systems and appliances shown have not been tested and no guarantee as to their operability or efficiency can be given.
Made with Metropix ©2026



home sweet home
estate agents
your local property experts