



Ponsonby Terrace

London, SW1P

£7,000 per month
(£1,615.38 per week)

The property comprises a large reception room with living, onto kitchen, with the master bedroom with two bathroom, one en-suite, two further double bedrooms and terrace. All bills are included.

CHESTERTONS



Ponsonby Terrace

London, SW1P

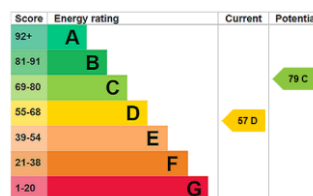
- Short Let
- Three Double Bedrooms
- Modern Kitchen
- Desirable Street
- Available Now



Entering the property on the ground floor there is a large reception room with living, onto kitchen, with the master bedroom located on the first floor with en suite bathroom including a separate bath and shower. There is also a separate bathroom with shower and terrace to the rear of the property. The second floor provides two further double bedrooms.

Ponsonby Terrace provides easy access to superb transport links including Gatwick Express, Circle, District and Victoria lines and National rail services. The property is very well located for St James Park and Westminster underground stations providing linkages to the Jubilee, District and Circle lines.

Minimum Term: 1 months
Deposit Required: £0.00
Local Authority:
Council Tax Band:
EPC Rating: D
Furnished



Chestertons Westminster & Pimlico Lettings

105 Wilton Road
 London
 SW1V 1DZ
westminsterlettingsusers@chestertons.co.uk
 02030408220
chestertons.co.uk

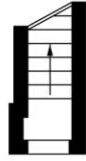
Additional tenant charges apply (fees apply to non-AST tenancies only)
 Tenancy Agreement Fee: £300
 References per Tenant/Guarantor: £60
 Inventory check (approx. £100 – £250 inc. VAT)
chestertons.co.uk/property-to-rent/applicable-fees

Ponsonby Terrace, SW1P

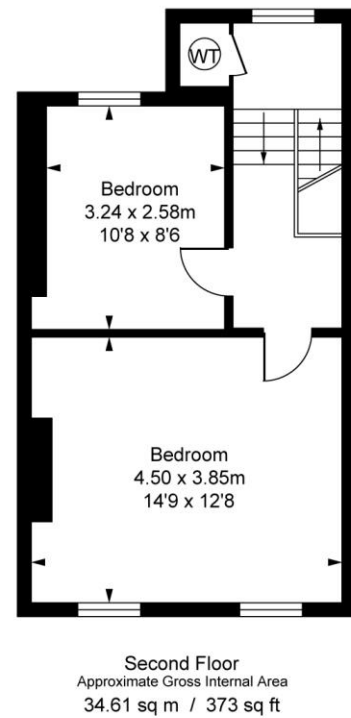
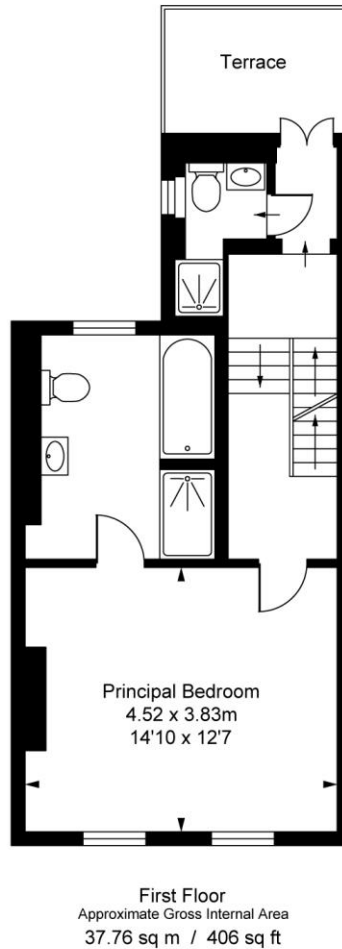
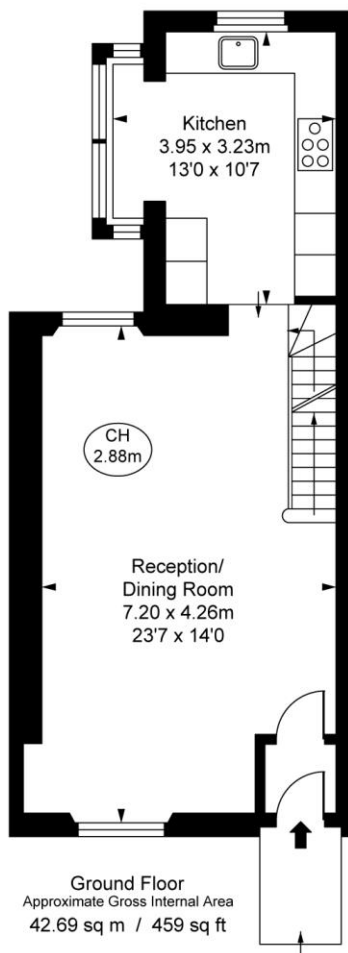
Approximate Gross Internal Area

116.25 sq m / 1,251 sq ft

(CH = Ceiling Heights)



Lower Ground Floor
Approximate Gross Internal Area
1.19 sq m / 13 sq ft



This plan is not to scale. It is for guidance and not for valuation purposes.
All measurements and areas are approximate only, and have been prepared in accordance with the current edition of the RICS Code of Measuring Practice.
© Fulham Performance

