



64 Station Road

London, SE20 7BJ

Asking Price £550,000

Exceptional Three Double Bedroom Period House for Sale in Penge, SE20

Located on one of Penge's most convenient residential roads, this beautifully presented three double-bedroom period terraced house offers over 927 sq ft of well-proportioned living accommodation, combining period character with stylish modern finishes.

Positioned within easy reach of Penge East, Penge West and Anerley stations, this attractive freehold family home is ideally suited to first-time buyers, growing families and London commuters seeking excellent transport connections alongside generous living space.

The accommodation is arranged over two floors and comprises a spacious 23ft through reception and dining room, creating a bright and versatile living environment ideal for both everyday family life and entertaining guests. To the rear, the property benefits from a stylish fitted kitchen with ample storage and workspace, together with a contemporary family bathroom finished to a modern standard.

The first floor provides three genuine double bedrooms, a rare feature for period houses in the area, offering flexible accommodation for families, professionals working from home or buyers seeking additional guest space.

Externally, the property enjoys a rear garden extending to approximately 28ft, providing an excellent outdoor space for

Viewing

Please contact our Galloways Penge Office on 020 8778 1120 if you wish to arrange a viewing appointment for this property or require further information.

- THREE DOUBLE BEDROOM PERIOD HOUSE
- TERRACED FREEHOLD HOUSE
- SPACIOUS 23FT THROUGH RECEPTION AND DINING ROOM
- THROUGH RECEPTION ROOM
- STYLISH FITTED KITCHEN
- CONTEMPORARY FAMILY BATHROOM
- 59 SECS WALK TO PENGE EAST STATION
- 7 MINUTE WALK TO PENGE WEST STATION
- 7 MINUTE WALK TO CRYSTAL PALACE PARK
- (WALKING TIMES ESTIMATED BY GOOGLE MAPS)



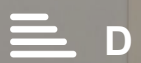
3



1

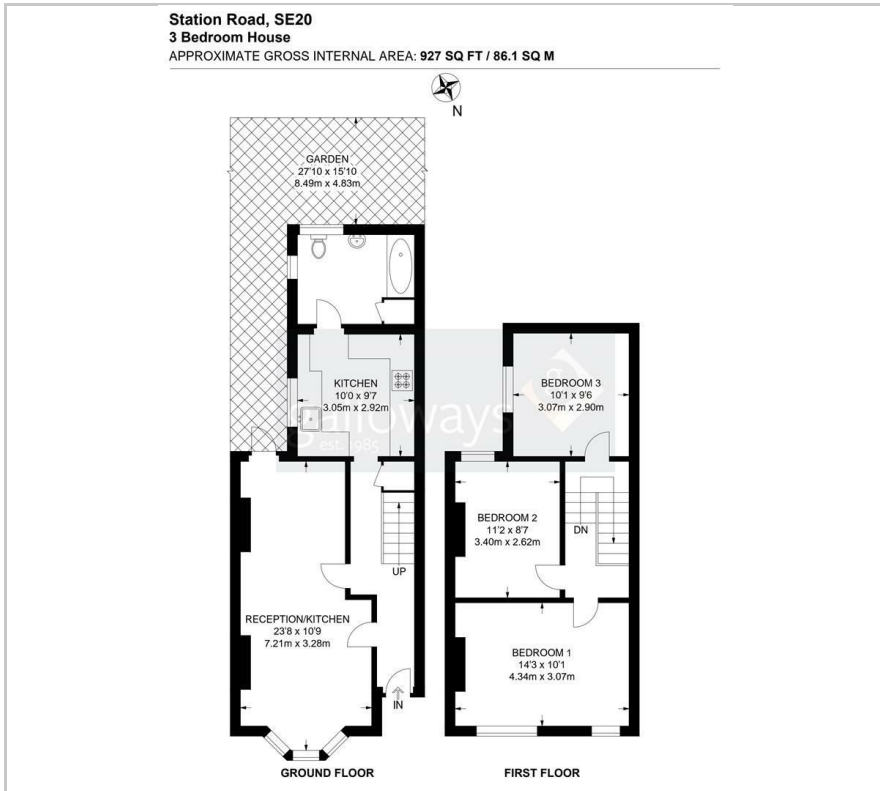


1



D

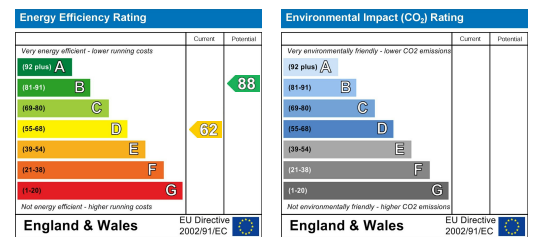
Floor Plan



Area Map



Energy Efficiency Graph



These particulars, whilst believed to be accurate are set out as a general outline only for guidance and do not constitute any part of an offer or contract. Intending purchasers should not rely on them as statements of representation of fact, but must satisfy themselves by inspection or otherwise as to their accuracy. No person in this firm's employment has the authority to make or give any representation or warranty in respect of the property.