



01947 601301



2 POPLAR ROW, WHITBY

4 BED TOWN HOUSE



WWW.HOPEANDBRAIMESTATEAGENTS.CO.UK



PROPERTY FEATURES

- Period Townhouse close to the Town's Attractions
- Over 1,000 sq ft of Accommodation over 5 Floors
- Period Features including High Ceilings & Fireplaces
- Open Plan Kitchen/Diner with Appliances
- Elegant Lounge with West-Facing Windows
- 4 Bedrooms, Study & Downstairs Bathroom
- Gas Central Heating & Double-Glazing Throughout
- Currently a Holiday Let and is being sold Fully Furnished
- Potential to Improve by Refurbishment

Type: **TOWN HOUSE**
Availability: **FOR SALE**

Bedrooms: **4**

Bathrooms: **1**

Reception Rooms: **1**

Parking: **ON ROAD PARKING**

Outside Space: **YARD**

Tenure: **FREEHOLD**

01947 601301

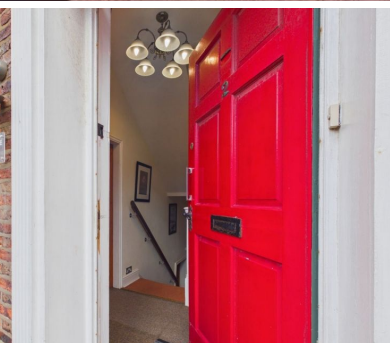
www.hopeandbraimstateagents.co.uk



2 POPLAR ROW, WHITBY- 4 bed Town House -£259,950



Hope & Braim are delighted to present this substantial period townhouse, occupying a prime position within easy reach of the town's principal attractions. Arranged over five floors and extending to more than 1,000 square feet, this handsome brick-built property combines generous proportions with a wealth of character throughout. The accommodation is both flexible and well-appointed. To the lower ground floor, an open-plan kitchen and dining room provides a sociable heart to the home, fitted with integrated appliances and complemented by a separate utility room. A downstairs bathroom completes the facilities on this level. Rising through the property, the principal reception room occupies a prominent position and is a room of genuine distinction, a generous lounge benefiting from west-facing windows that draw in the afternoon and evening light, lending a warmth and elegance befitting a property of this standing. Period details including high ceilings and original fireplaces are present throughout, serving as a reminder of the character that defines the building. Four bedrooms and a study are arranged across the upper floors, offering comfortable accommodation for family use or as is currently the case, holiday let occupation. The property is being sold fully furnished and represents a ready-to-operate investment opportunity from the outset. Gas central heating and double-glazing are fitted throughout, ensuring year-round comfort. Externally, a yard to the rear provides outdoor space, with an outhouse offering practical storage. There is also scope for sympathetic refurbishment for those wishing to enhance the property further and realise its considerable potential.



2 POPLAR ROW, WHITBY- 4 bed Town House -£259,950



Approximate total area⁽¹⁾

1071 ft²

Reduced headroom

45 ft²

(1) Excluding balconies and terraces

Reduced headroom

..... Below 5 ft

Calculations reference the RICS IPMS 3C standard. Measurements are approximate and not to scale. This floor plan is intended for illustration only.

GIRAFFE360

Disclaimer: This brochure and property details are a representation of the property offered for sale or rent, as a guide only.

Brochure content must not be relied upon as fact and does not form any part of a contract. Measurements are approximate.

No fixtures or fittings, heating system or appliances have been tested, nor are they warranted by Hope & Braim or any staff member in any way as being functional or regulation compliant.

Hope & Braim do not accept any liability for any loss that may be caused directly or indirectly by the brochure content, all interested parties must rely on their own, their surveyor's or solicitor's findings.

We advise all interested parties to check with the local planning office for details of any application or decisions that may be consequential to your decision to purchase or rent any property.

Any floor plans provided should be used for illustrative purposes only and should be used as such by any interested party.

