

# PULLEN

ESTATE AGENTS



## Flat 3 Aydon House Waratah Drive

, Chislehurst, BR7 5FS

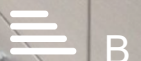
£340,000

An exceptional opportunity to acquire this beautifully presented two double bedroom ground floor apartment, set within the highly sought-after Kings Quarter development. Conveniently located 0.7 miles away from Elmstead Woods Station, the property offers excellent transport links and a desirable residential setting.

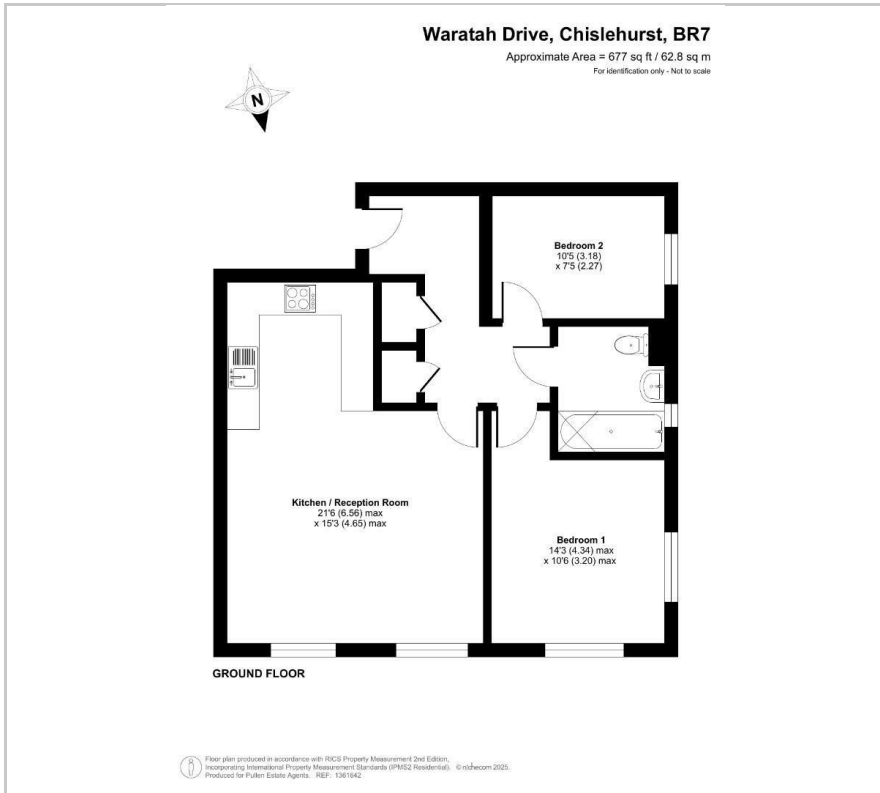
- Ground floor
- Two double bedrooms
- Allocated parking
- Envyable location
- Popular development
- Access to Elmstead Wood Stations

### Viewing

Please contact our Chislehurst Office on 02034899589 if you wish to arrange a viewing appointment for this property or require further information.



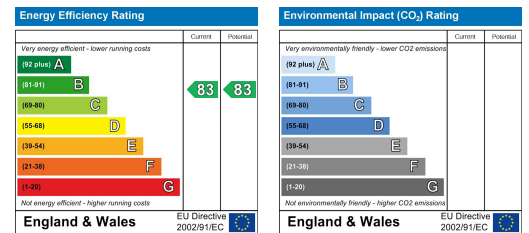
## Floor Plan



## Area Map



## Energy Efficiency Graph



These particulars, whilst believed to be accurate are set out as a general outline only for guidance and do not constitute any part of an offer or contract. Intending purchasers should not rely on them as statements of representation of fact, but must satisfy themselves by inspection or otherwise as to their accuracy. No person in this firm's employment has the authority to make or give any representation or warranty in respect of the property.