



**SPACIOUS FOUR BEDROOM, THREE BATHROOM DETACHED FAMILY HOME IN A DESIRABLE LOCATION**

Northgate, Northwood, Middlesex, HA6 2TH

**ROBSONS**

Northgate, Northwood, Middlesex, HA6 2TH

**Copsewood Estate • Gated Parking • Large Plot •  
Further Potential STPP • Chain Free • Modern  
Finish • 2500+ sqft**

**Description**

Walderton is an impressive detached family home set on a commanding plot set within the favoured Copsewood Estate. The property is set back from the road accessed via electric gates offering secure parking for several vehicles. Internally the property boasts over 2530 sqft of modern accommodation set over two floors comprising four bedrooms and three bathrooms.

The large open plan kitchen, living and dining room enjoys views over the large, mature and private rear garden. The property still presents further potential subject to the usual planning consents and permissions and is offered to the market with the benefit of no onward chain.





Northwood town centre is within a short car ride and offers a selection of shops, Waitrose supermarket, restaurants and the Metropolitan Line station provides access to Baker Street and The City beyond. Northwood is well catered for with a choice of private and state schools and sporting facilities include several local golf courses, tennis, squash, the Esporta Health Club and water sports at nearby Rickmansworth aquadrome.

#### **Additional Information**

Tenure: Freehold

Local Authority: London Borough of Hillingdon

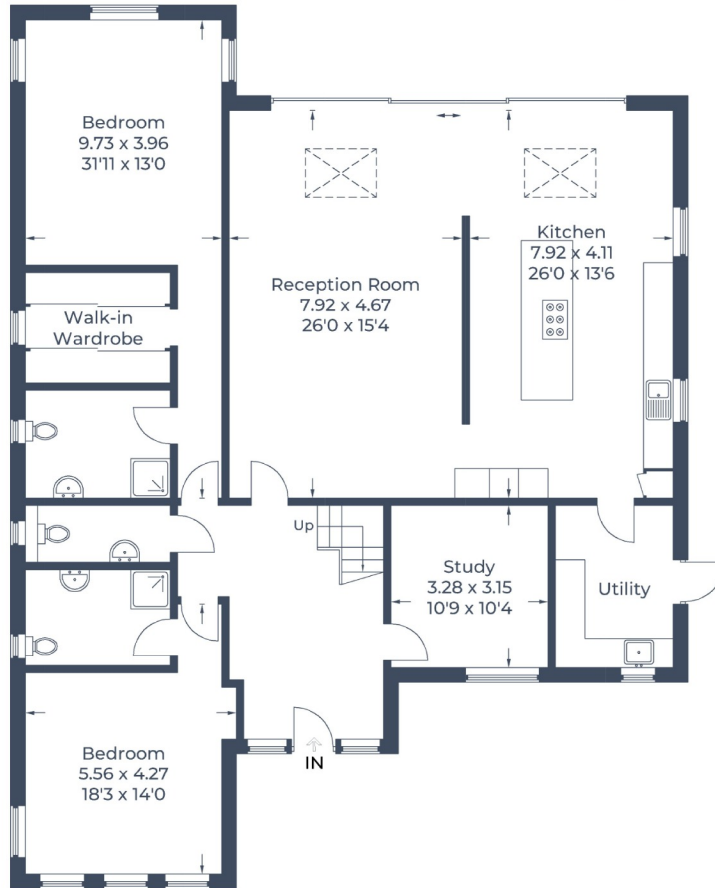
Council Tax Band: G

Energy Efficiency Rating: C

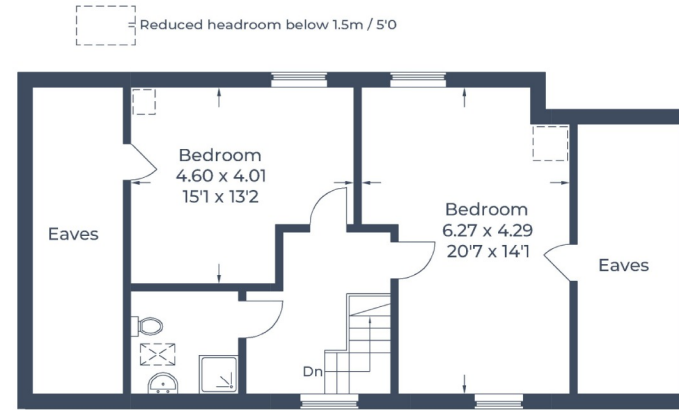
For additional information, please refer to [www.robsonswb.com](http://www.robsonswb.com) or call us on: 01923 835355.



Approximate Gross Internal Area  
 Ground Floor = 180.1 sq m / 1,940 sq ft  
 First Floor = 55.3 sq m / 595 sq ft  
 Total = 235.4 sq m / 2,535 sq ft (Excluding Eaves)



**Ground Floor**



**First Floor**

Illustration for identification purposes only,  
 measurements are approximate, not to scale.  
 © CJ Property Marketing Produced for Robsons



7 Clive Parade, Northwood, HA6 2QF  
 Tel: 01923 835355 Email: northwood@robsonsweb.com  
[www.robsonsweb.com](http://www.robsonsweb.com)

SCAN TO VISIT



OUR WEBSITE

Important notice: Robsons, their clients and any joint agents give notice that 1: They are not authorised to make or give any representations or warranties in relation to the property either here or elsewhere, either on their own behalf or on behalf of their client or otherwise. They assume no responsibility for any statement that may be made in these particulars. These particulars do not form part of any offer or contract and must not be relied upon as statements or representations of fact. 2: Any areas, measurements or distances are approximate. Plot sizes and dimensions are taken from Promap and are approximate. The text, photographs and plans are for guidance only and are not necessarily comprehensive. It should not be assumed that the property has all necessary planning, building regulation or other consents and Robsons have not tested any services, equipment or facilities. Purchasers must satisfy themselves by inspection or otherwise.