



## Bromar Road, SE5

£330,000

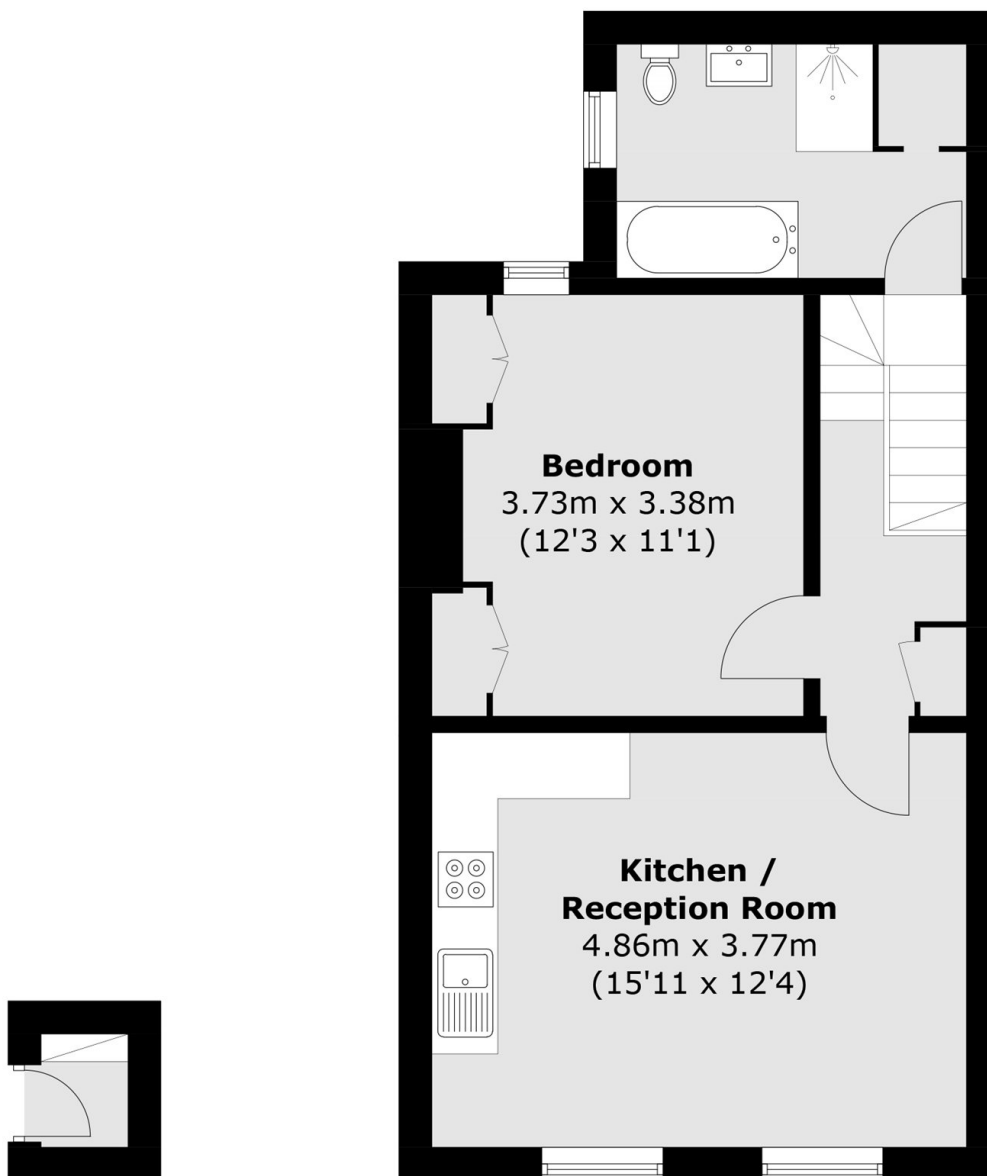
A top floor one double bedroom flat in a Victorian period conversion on the sought after Bromar Road. The flat has an open plan sociable kitchen/reception room and comes with a healthy lease length.

Bromar Road is a popular tree-lined road perfectly located for Bellenden Road with its array of specialist shops, bars and selection of restaurants and many outstanding local schools. Peckham Rye and Denmark Hill Stations are close by offering excellent rail links into the City and beyond.

### Features

- One Double Bedroom
- Top Floor
- Period Conversion
- Excellent Location
- Healthy Lease
- Open Plan Kitchen/Reception

# Bromar Road, London, SE5



**First Floor**

**Second Floor**

Total area (approx.): 45.8 sq. m (492.9 sq. ft)