



## Ingelow Road, SW8

£2,500 Per calendar month

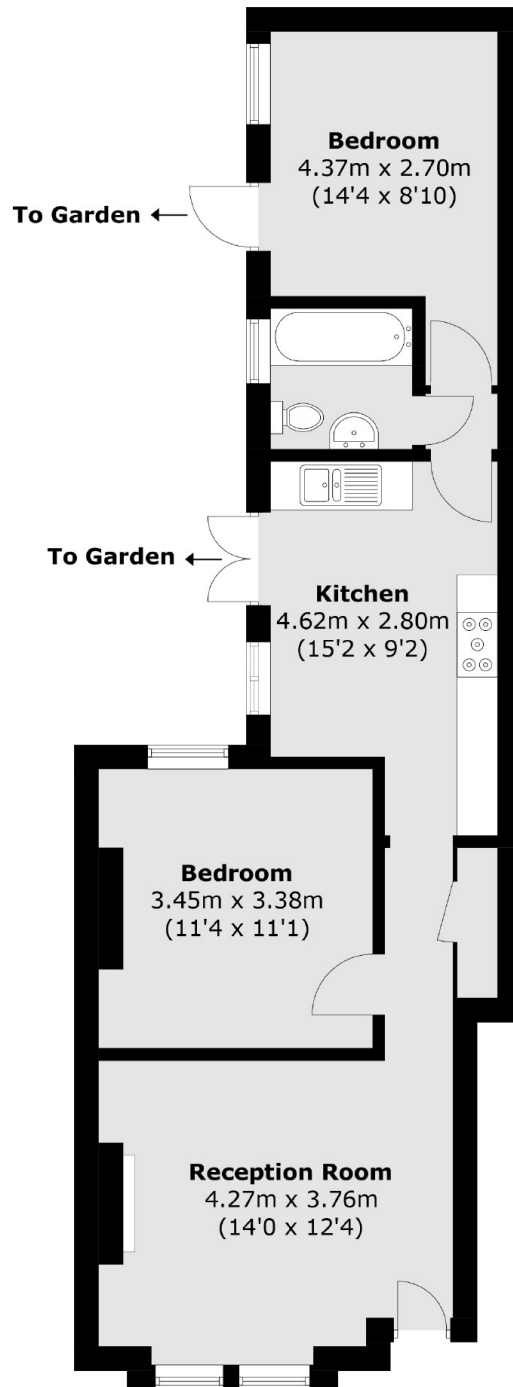
A recently refreshed two double bedroom flat with a traditional finish and a large eat-in kitchen that leads onto a private garden.

A great location for your commute, just 0.5 miles to Queenstown Park Station and less than a mile from both Battersea Park and Battersea Power Station with its abundance of Shops, Restaurants, Bars and the Northern Line.

### Features

- Two Bedrooms
- Wood Floors
- Traditional Style
- Own Front Door
- Private Garden
- Feature Fireplace

# Ingelow Road, London, SW8



Total area (approx.): 58.8 sq. m ( 632.9 sq. ft)