

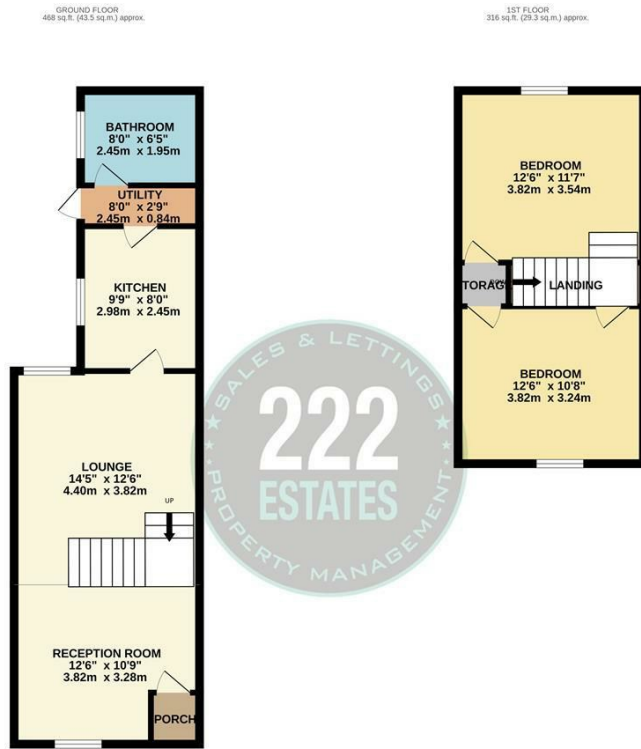


## 118 OLDHAM STREET WARRINGTON, WA4 1EX

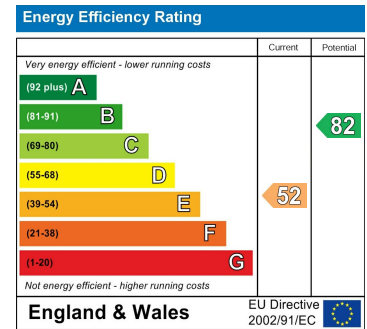
£170,000  
LEASEHOLD

Well placed on the charming Oldham Street in Warrington, this delightful end terrace house presents a perfect blend of character and modern living. Built in 1909, the property carries a rich history while offering a comfortable and inviting atmosphere for its residents. Spanning an area of 753 square feet, this home features two well-proportioned reception rooms, ideal for both relaxation and entertaining guests.





2 BEDROOM TERRACE HOUSE  
 TOTAL FLOOR AREA: 784 sq. ft. (72.8 sq. m.) approx.  
 Whilst every attempt has been made to ensure the accuracy of the floorplans contained herein, measurements of doors, windows, rooms and any other items are approximate and the responsibility is taken for any error, omission or mis-statement. This plan is for illustrative purposes only and should be used as such by any prospective purchaser. The services, systems and appliances shown have not been tested and no guarantee as to their operability or efficiency can be given.  
 Made with Metropix (2020).



Agents Note: Whilst every care has been taken to prepare these particulars, they are for guidance purposes only. All measurements are approximate and are for general guidance purposes only and whilst every care has been taken to ensure their accuracy, they should not be relied upon and potential buyers/tenants are advised to recheck the measurements

222 Estates Lettings and Sales  
 222 Orford Lane Orford  
 Warrington  
 Cheshire  
 WA2 7BB

01925 499599  
 info@222estates.co.uk  
 www.222estates.co.uk

