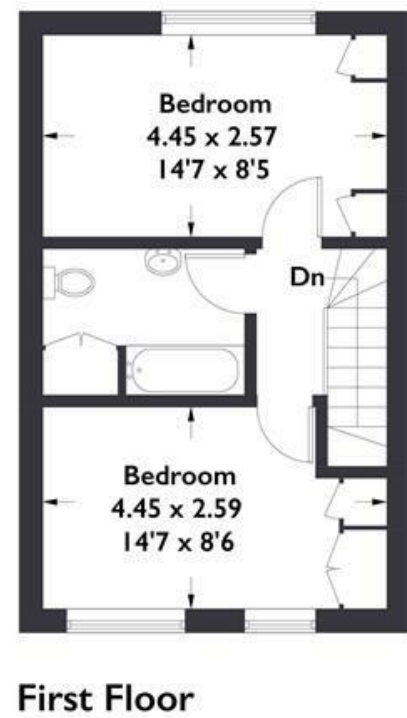
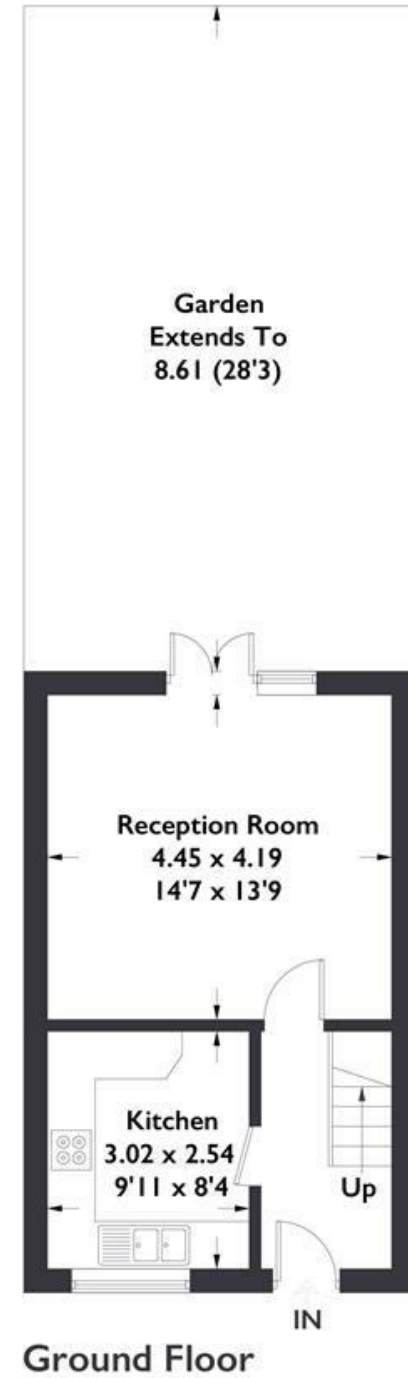


**Littlewood Close, W13**

Approximate Gross Internal Area = 65.4 sq m / 704 sq ft



HOUSE - TERRACED

**Littlewood Close W13**  
£2,200 PCM

**FEATURES**

- Two Double Bedrooms
- Off Street Parking
- Private Garden
- Close to tube station

Measured in accordance with RICS Code of Measuring Practice. To be used for identification and guidance purposes only. Whilst every care is taken in the preparation of this plan, please check all dimensions, shapes and compass bearings before making any decisions reliant upon them.

HOUSE - TERRACED

# Littlewood Close W13

£2,200 PCM

Beautiful two double bedroom house is situated on a quiet residential close, just moments from Northfields Tube Station as well as the many shops, cafes, restaurants, parks, transport links of Northfield Avenue and also located within the popular Fielding school catchment.

