



BEAUFORT GREEN



Fulham Road, SW6

£450,000



Located along the ever-popular Fulham Road, this bright and beautifully presented 1-bedroom flat is just a short walk from Parsons Green tube station. Set in a prime location, it offers the perfect blend of convenience, style, and comfort in the heart of Fulham.

The property boasts a spacious and bright south facing reception room and modern kitchen — ideal for home cooks and entertaining. The flat also features an adequate double bedroom and a sleek, contemporary bathroom. Modern fixtures and finishes are found throughout, enhancing the overall sense of quality and ease of living.

With plenty of natural light and thoughtful design, this home provides a welcoming, airy atmosphere. Residents will also enjoy easy access to the area's vibrant cafés, restaurants, boutique shops, and the green open space of Parsons Green.

This flat is perfect for professionals or couples seeking a stylish and well-connected London home.





BEAUFORT GREEN

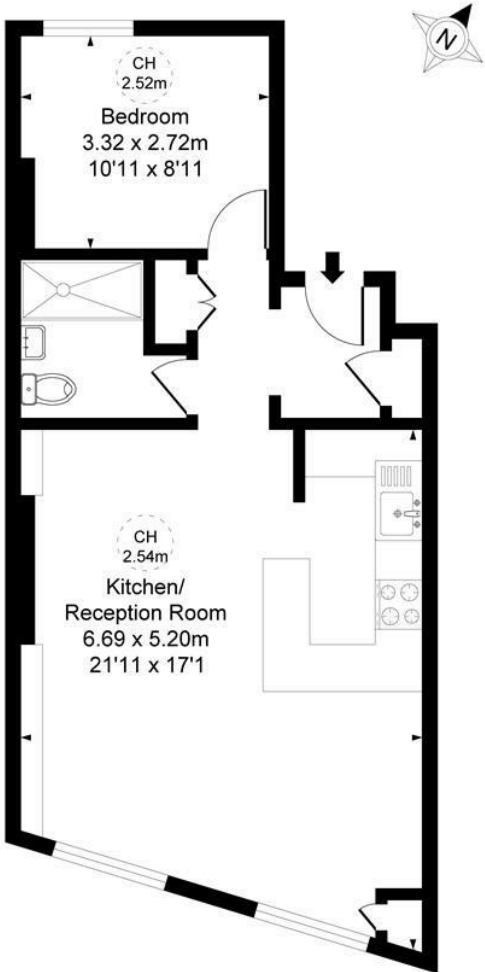
BEAUFORT GREEN

Fulham Road, SW6

Approximate Gross Internal Area

49.70 sq m / 535 sq ft

(CH = Ceiling Heights)



Second Floor

At a Glance.

This plan is not to scale. It is for guidance and not for valuation purposes. All measurements and areas are approximate only, and have been prepared in accordance with the current edition of the RICS Code of Measuring Practice.

BEAUFORT GREEN

02074594100

charlie@beaufortgreen.co.uk

263 New Kings Road
London
SW16 1DB