



**Upper Park Road, NW3**

**£4,799,999**

**Dexters**



## Upper Park Road, NW3

A rare opportunity to acquire a substantial seven-bedroom Victorian house, coming to the market for the first time in over 100 years. Arranged over four floors with a west-facing garden, the property offers exceptional scope for refurbishment and extension (subject to planning).

Held within the same family for three generations, this impressive period residence retains an abundance of original charm, including high ceilings, ornate cornicing, and fireplaces.

Currently arranged over four expansive floors, it includes a self-contained flat at garden level and generous proportions throughout. The house now requires comprehensive modernisation, presenting a blank canvas to create a magnificent bespoke family home. Subject to the necessary consents, there is significant potential to extend to the side and rear.

A mature West-facing garden of approximately 65 ft and a wide, walled front garden further enhance this exceptional property.

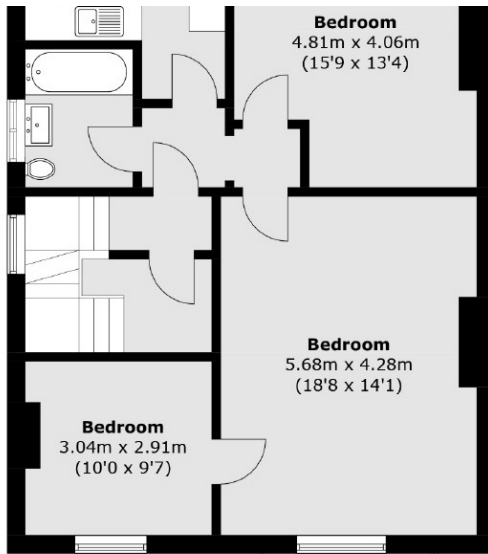
Upper Park Road is a prime, tree-lined address at the Belsize Park end of Hampstead, moments from the open spaces of Primrose Hill and Regent's Park. The cafés, boutiques, and restaurants of Haverstock Hill are within easy reach. Excellent transport links include Chalk Farm (Northern line), Belsize Park (Northern line), and Swiss Cottage (Jubilee line).

### Features

- Seven Bedrooms
- Amazing Potential
- Freehold
- Victorian House
- Beautiful Garden
- Period Features

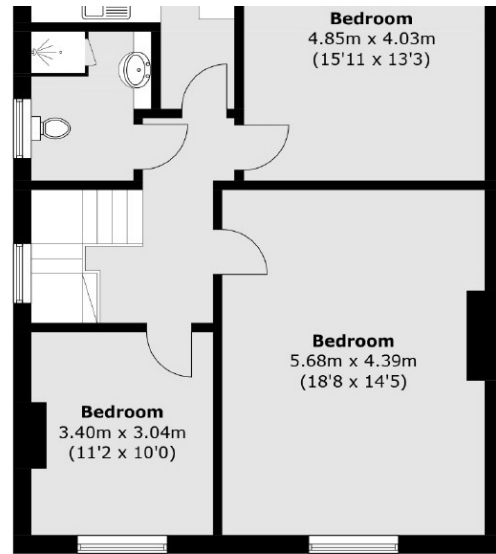
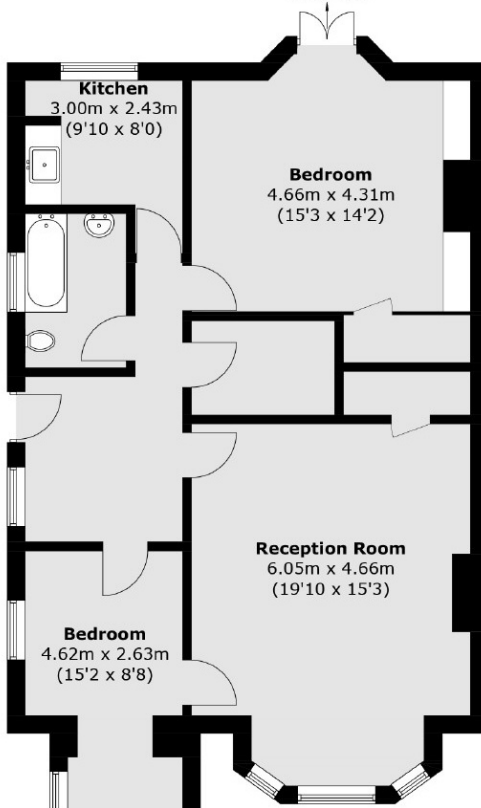


# Upper Park Road, London, NW3



**First Floor**

To Garden



**Second Floor**

