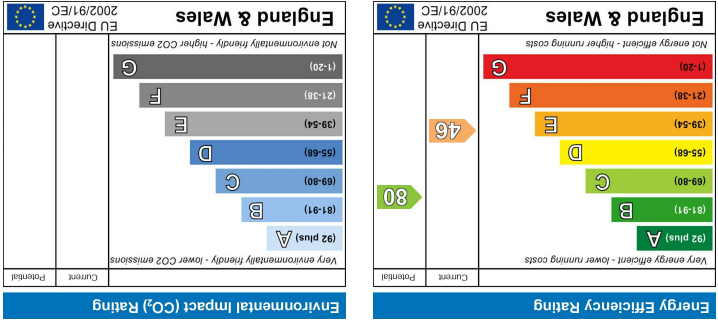


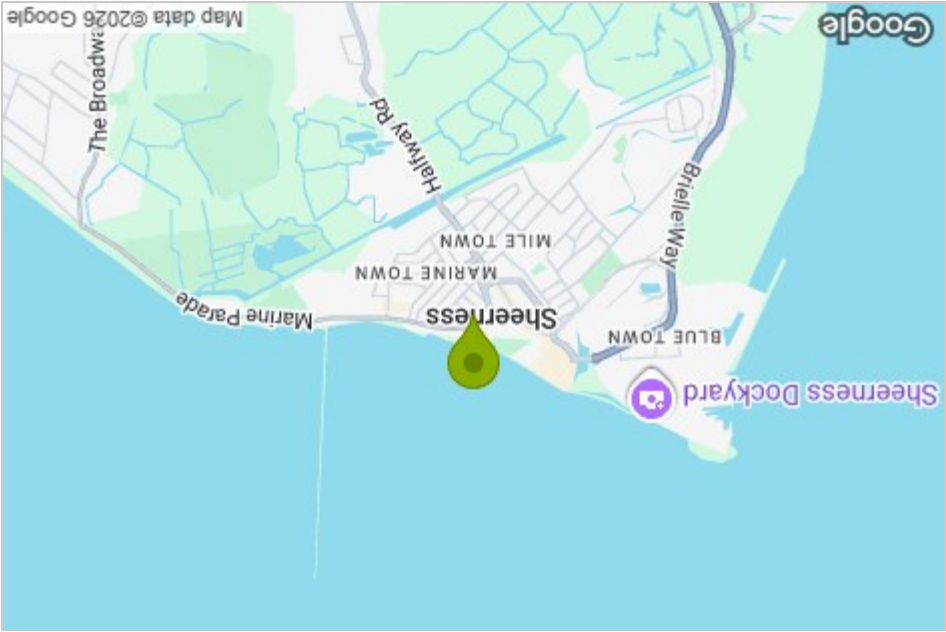
These particulars, whilst believed to be accurate are set out as a general outline only for guidance and do not constitute any part of an offer or contract. Intending purchasers should not rely on them as statements of representation or fact, but must satisfy themselves by inspection or otherwise as to their accuracy. No person in this firm's employment has the authority to make or give any representation or warranty in respect of the property.

Please contact our Isle of Sheppey Office on 01795 666 666 if you wish to arrange a viewing appointment for this property or require further information.

Viewing



Energy Efficiency Graph



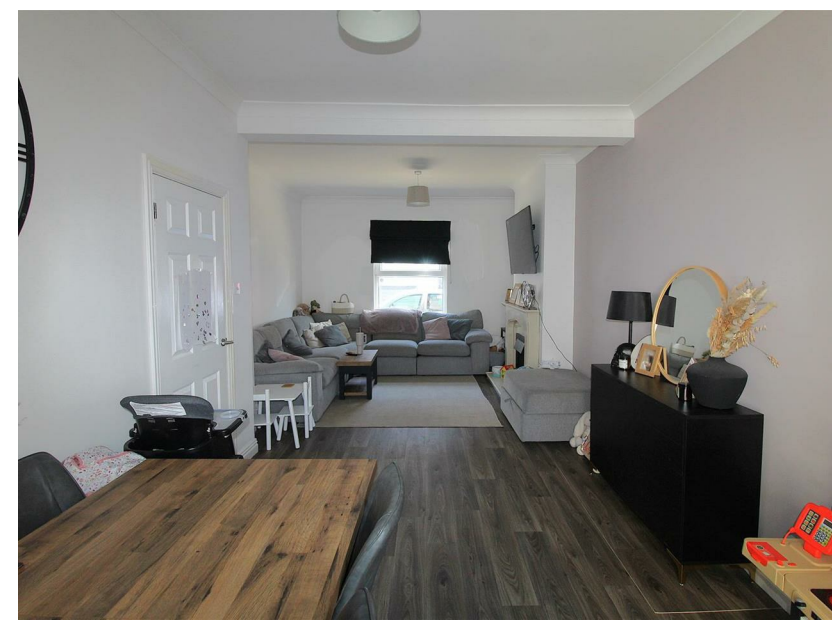
Area Map



Floor Plan



1 Ranelagh Road



- 3 Bed
- Main Bathroom Plus En Suite
- Stone Throw To The Town Centre, Schools And All Amenities
- Well Maintained Garden
- Be Fast Not To Miss This One!
- End Terrace
- Perfect For First Time Buyers, Families And Investors Alike
- Open Plan Lounge/Dining
- Council Tax Band B

Description

£225,000

3 bed end terrace house on Ranelagh Road in the charming town of Sheerness, this delightful house presents an excellent opportunity for first-time buyers, families, and investors alike. Boasting three well-proportioned bedrooms.

The heart of the home is an inviting open-plan lounge and dining area, creating a warm and welcoming space for both relaxation and entertaining. The property is equipped with two bathrooms, including a main bathroom and an en suite, ensuring convenience for all residents. The property has a well maintained enclosed rear garden.

Situated just a stone's throw from the town centre, residents will enjoy easy access to a variety of amenities, including shops, schools, and recreational facilities. This prime location enhances the appeal of the property, making it an ideal choice for those seeking a vibrant community atmosphere.

With its blend of comfort, practicality, and proximity to local conveniences, this three-bedroom house on Ranelagh Road is a must-see for anyone looking to make a home in Sheerness. Don't miss the chance to explore this wonderful property that perfectly balances modern living with a friendly neighbourhood feel.

, Sheerness, ME12 2NS

