

R

www.robertsproperty.co.uk

Roberts

Sales, Lettings & Block Management

MID-TERRACED HOUSE

£280,000



Cunningham Place, Bournemouth, Dorset, BH11 8EA

- * **Mid Terrace House** * **70 Sq'M / 753 Sq'Ft** *
- * **Three Bedrooms** * **Kitchen Separate to Reception** *
- * **Lounge Through Diner with Patio Door to Garden** *
- * **Family Bath & Shower Room** * **Garden Faces South** *
- * **Brick Shed Stores x2** * **Garage to Rear** * **New Roof** *
- * **EPC C-Rated** * **Council Tax Band B** *

158 Charminster Road, Bournemouth, Dorset, BH8 8UU Tel: 01202 565758 Fax: 01202 530955

Please note that the services within this property were not tested, also please note all room sizes are approximate measurements and into recesses and bay windows where appropriate.

Cunningham Place, Bournemouth, Dorset, BH11 8EA:

Front garden laid to lawn with path to front door. Shared passageway gives access via gate to rear garden. UPVC double-glazed sliding door leading into porch with tiled floor. Front door leads into:

Entrance Hallway:

Textured ceiling with ceiling light point. UPVC double-glazed window to front aspect. Double panelled radiator. Access to under stairs storage which houses electric meter and consumer unit.

Lounge / Diner:

19' 5 x 13' 1 (5.93m x 3.99m) approx'. Coved and textured ceiling with two ceiling light points. UPVC double-glazed window to front and UPVC double-glazed patio doors to rear garden. Double panelled radiator, TV / media point and wood laminate flooring. Glazed internal doors leading to:

Kitchen:

9' 8 x 8' 9 (2.94m x 2.67m) approx'.

Plain ceiling with ceiling light point. UPVC double-glazed window to rear aspect and UPVC double-glazed door leading to rear garden. A range of wall and base mounted units with work surfaces over. Single bowl single drainer sink unit with mixer tap. Space and connection for gas cooker. Space and plumbing for washing machine and space for under counter fridge. Wall mounted gas central heating combination boiler. Splash back tiling and wood laminate flooring.

Staircase from entrance hallway to first floor landing

Landing:

Textured ceiling with ceiling light point. Fitted linen cupboard housing.

Bedroom One:

13' 10 x 10' 4 (4.22m x 3.16m) approx'.

Coved and textured ceiling, ceiling light point and two UPVC double-glazed windows to front aspect. Double panelled radiator. Fitted wardrobe.

Bedroom Two:

8' 8 x 8' 5 (2.64m x 2.57m) approx'. Coved and textured ceiling with ceiling light point and UPVC double-glazed window to rear aspect. Single panelled radiator.

Bedroom Three:

10' 4 x 6' 5 (3.16m x 1.96m) approx'.

Coved and textured ceiling with ceiling light point and UPVC double-glazed window to front aspect. Single panelled radiator. Fitted wardrobe.

Bathroom:

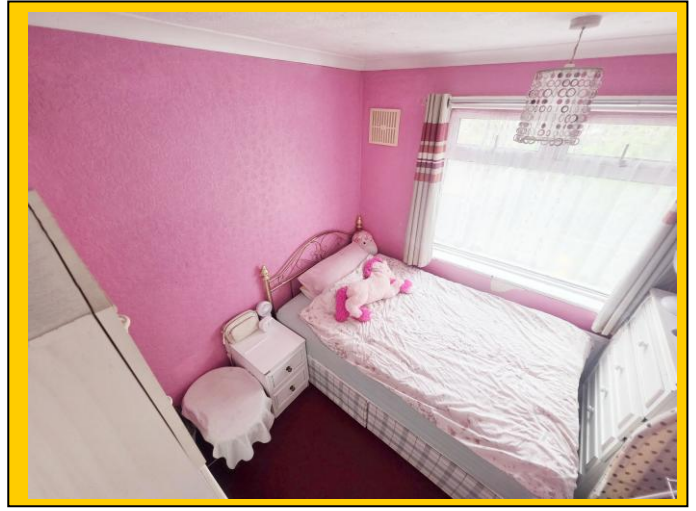
7' 3 x 5' 3 (2.21m x 1.61m) approx'. Textured ceiling with ceiling light point and frosted UPVC double-glazed window to rear aspect. Panelled bath. Vanity unit with inset wash hand basin and concealed cistern WC. Recessed shower cubicle with electric shower. Double panelled radiator.

Garage:

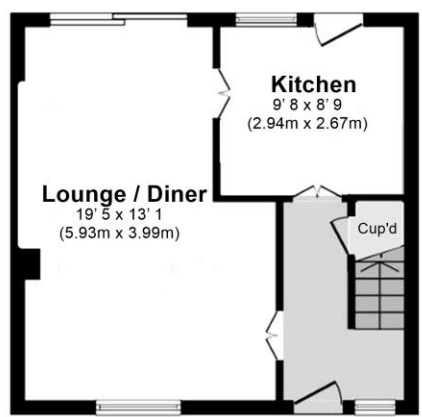
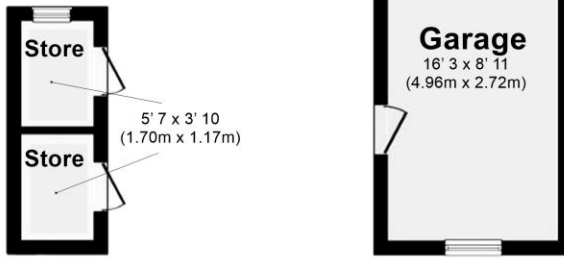
16' 3 x 8' 11 (4.96m x 2.72m) approx'. Accessed via gated resident's service lane. Up-and-over door and door to garden.

Rear Garden:

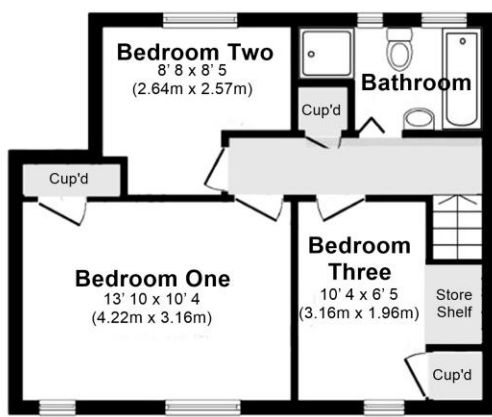
Laid partially to patio with elevated growing borders and fenced boundaries. Further patio seating area and an area laid to lawn. Pathway to garage, rear gate to service lane and gate shared passageway to front of property. Two brick built external storage sheds both being 5' 7 x 3' 10 (1.70m x 1.17m). One of the sheds having a rear aspect window.



70 Square Metres
753 Square Feet



Ground Floor



First Floor

