



St. Luke's Avenue, SW4

£375,000

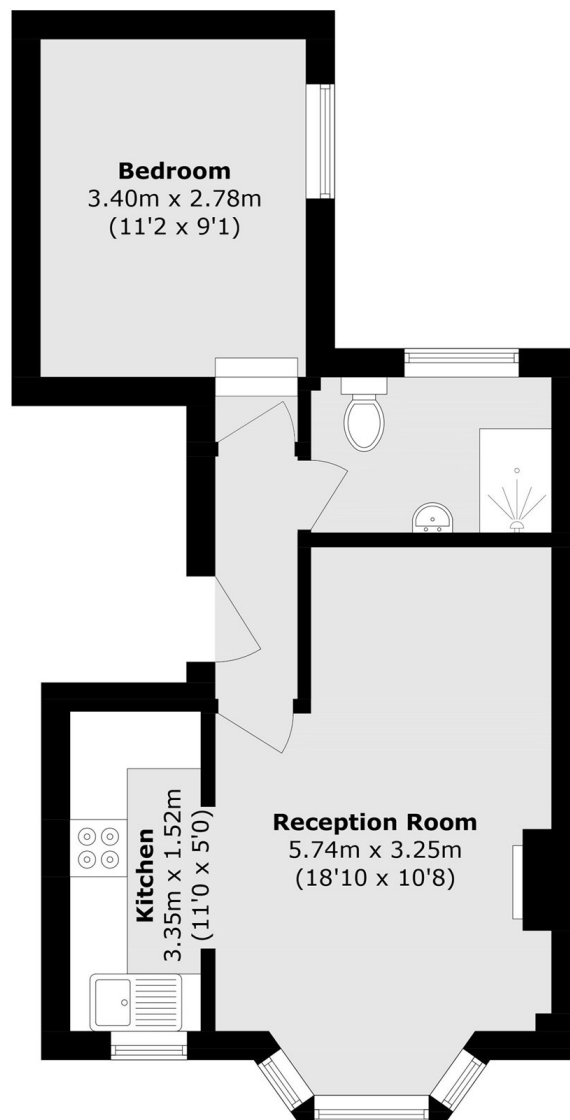
A first floor period conversion in the heart of Clapham. The well balanced accommodation comprises a spacious reception room with ample space to dine, an adjoining well equipped kitchen, a double bedroom, and a bathroom. Offered to the market chain free and with a share of the freehold.

St. Luke's Avenue is ideally positioned for easy access to the vibrant shops, bars, and restaurants of Clapham High Street and the charm of Clapham Old Town. Clapham Common and Clapham North Underground stations (Northern Line) are both within close proximity, providing excellent transport links into Central London.

Features

- Period Conversion
- Spacious Reception Room
- Semi-Open Plan Kitchen
- Double Bedroom
- Chain Free
- Share Of Freehold

St. Luke's Avenue, London, SW4



Total area (approx.): 40.1 sq. m (431.6 sq. ft)