



Graham Road

Salford



In Excess of £240,000

Graham Road

Salford

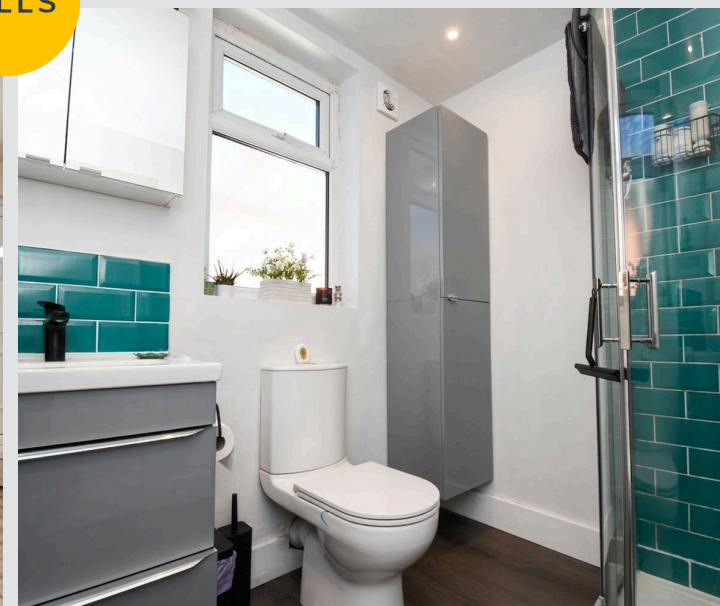
****Stunning Three Bedroom Property Located Within Walking Distance of Salford Royal Hospital, Light Oaks Primary School and Several Well-Kept Parks!**
Council Tax band: B**

Tenure: Leasehold

- Stunning three bedroom home within walking distance to Salford Royal Hospital
- Loft space complete with a velux window, lighting and has been plastered providing an extra space for storage or an office
- Two reception rooms knocked through creating a spacious open plan lounge/diner
- Stunning fitted kitchen complete with integrated appliances
- Sun-drenched courtyard garden to the rear
- Modern three piece bathroom suite
- Ideally located, close to Salford Royal Hospital, excellent transport links, amenities and good local schooling
- Three generous sized bedrooms
- Perfect first time buy or family home!



HILLS



Entrance Porch

Open Plan Lounge / Diner
26' 5" x 14' 6" (8.04m x 4.42m)

Kitchen
13' 9" x 9' 1" (4.20m x 2.76m)

Landing

Bedroom One
14' 6" x 11' 2" (4.42m x 3.40m)

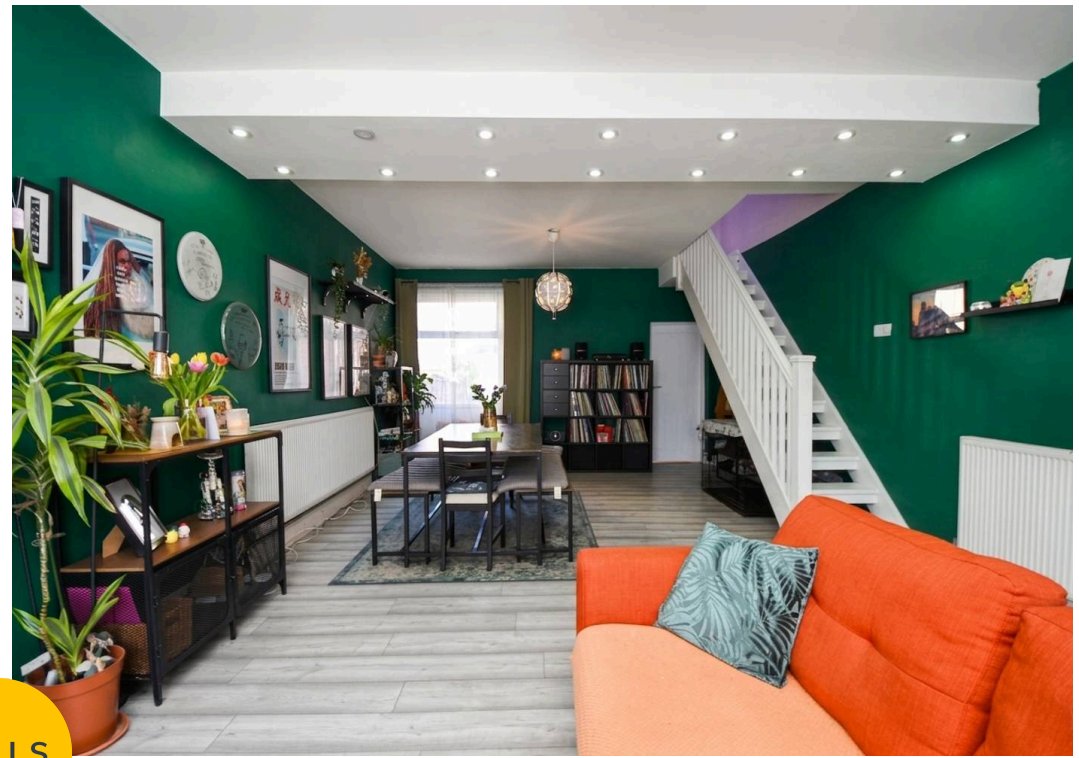
Bedroom Two
12' 8" x 9' 6" (3.86m x 2.89m)

Bedroom Three
9' 2" x 8' 0" (2.79m x 2.43m)

Shower Room
7' 0" x 6' 0" (2.13m x 1.83m)

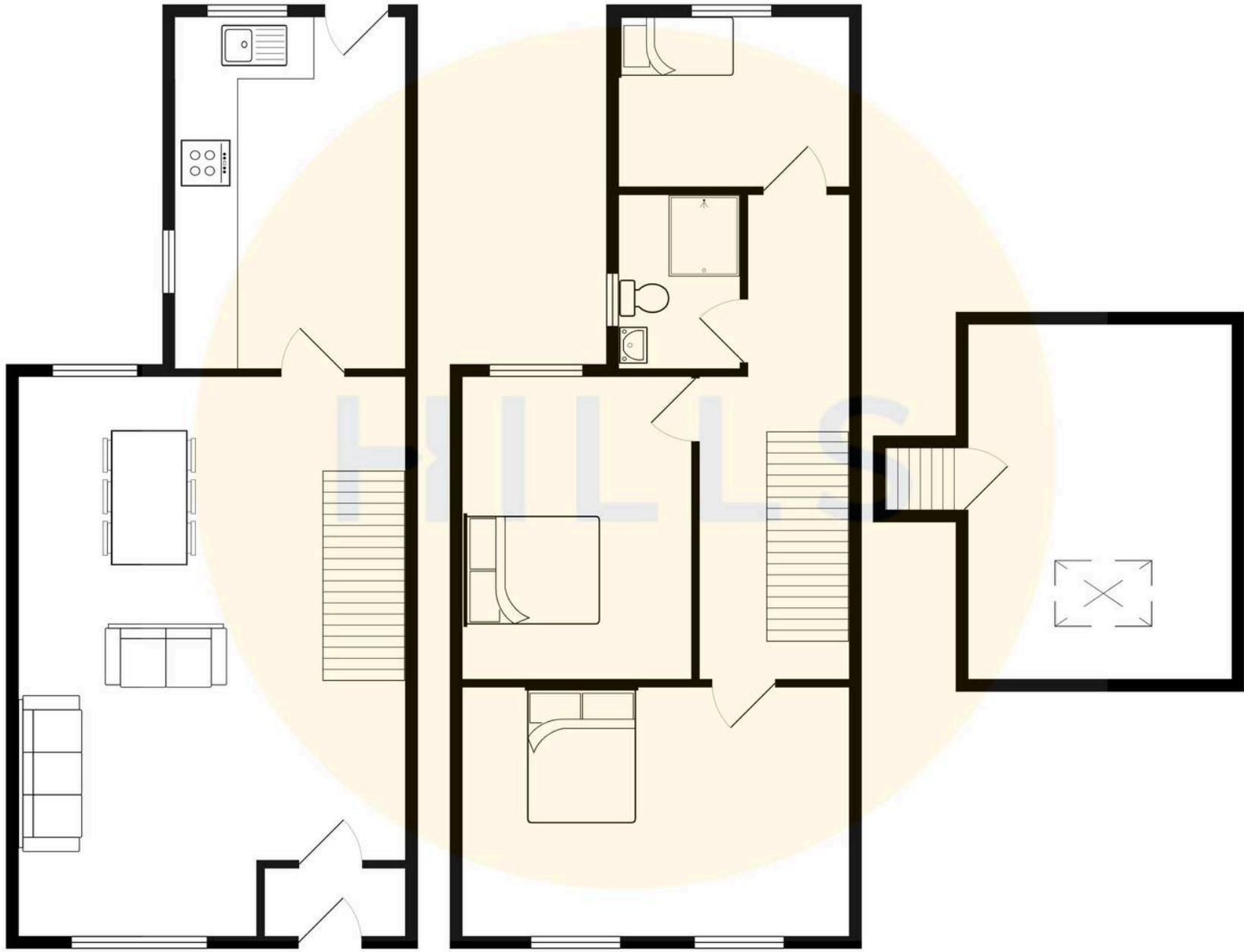
Loft Room
12' 6" x 10' 8" (3.82m x 3.25m)





HILLS







Hills | Salfords Estate Agent

Hills Residential, Sentinel House Albert Street – M30 0SS

0161 707 4900

sales@hills.agency

www.hills.agency/



By law, we are required to conduct anti-money laundering checks on all potential buyers and sellers. In line with HMRC guidelines, our trusted partner, Coadjute, will securely manage these checks on our behalf. A non-refundable fee of £45 + VAT per person will apply, and Coadjute will handle the payment. Once an offer is accepted, Coadjute will send a secure link for you to complete the biometric checks. These checks must be completed before we can send the memorandum of sale to all parties. PLEASE NOTE: The Agent has not tested any equipment, fixtures, fittings or services so cannot verify that they are in working order or fit for the purpose. References to the properties tenure are based on information supplied by the seller. You are advised to check the availability of this property before travelling any distance to view. Every effort has been made to ensure these particulars are correct and not misleading but their accuracy is not guaranteed nor do they form part of any contract.