

Nabcroft Lane, Huddersfield, HD4 5EP

£1,100 Per Month

Council Tax Band: C



Open House Estate Agents Huddersfield is proud to bring to the Rental Market this Modern Four Bedroomed Stonebuilt Townhouse, situated in the popular area of Crosland Moor.

Accommodation briefly comprises kitchen with integrated appliances including hob, electric oven, integrated fridge freezer and plumbing for washing machine, lounge and downstairs W.C.

To the first floor there are two bedrooms and family bathroom with three piece suite with shower over the bath.

To the second floor there is a Master Bedroom with En Suite Shower Room and a further Bedroom.

Externally, there is a communal walkway to the rear and to the front there is a Tarmac Car Park providing parking for all Townhouse residents.

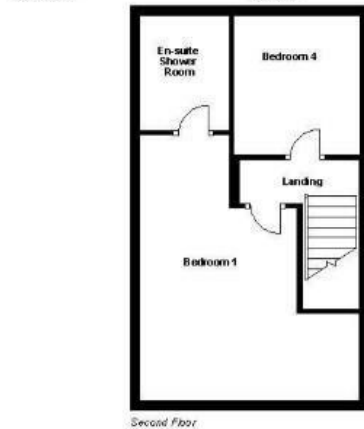
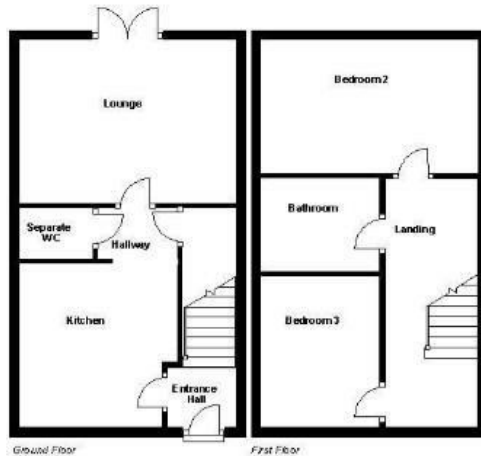
Call us now to arrange your viewing - Our lines are open 24 hours a day, 7 days a week to take your call !!

GROUND FLOOR :-

Living Room - 14'1 x 10'9 (4.29m x 3.28m) -
 Kitchen - 10'10 x 10'6 (3.30m x 3.20m) - With oven, hob, integrated fridge freezer and plumbing for a washing machine
 Ground W.C - Dual Flush WC & Sink Basin

FIRST FLOOR :-

Bedroom One - 10'7 x 16'1 (3.23m x 4.90m) -
 Bedroom Two - 14'1 x 9'1 (4.29m x 2.77m) -
 Family Bathroom: - Incorporating a three piece suite in white with WC, Sink & Shower over the bath



Open House Huddersfield



Energy Efficiency Rating		
	Current	Potential
Very energy efficient - lower running costs		
(92 plus) A		
(81-91) B		88
(69-80) C	73	
(55-68) D		
(39-54) E		
(21-38) F		
(1-20) G		
Not energy efficient - higher running costs		
England & Wales	EU Directive 2002/91/EC	