



TRAFALGAR GROVE, SE10

£3,100 per month

Modern apartment
Three bedrooms
Two bathrooms
Open plan living
Ideal location
Energy rating: b

@marshandparsons
marshandparsons.co.uk

MARSH &
PARSONS

ABOUT THE PROPERTY

Suitable for all tenant types including sharers. A three bedroom, two bathroom modern apartment situated in a great location of Greenwich.

Ideally located with a short walk to Maze Hill mainline station, Cutty Sark DLR and the royal park. Close to central Greenwich offering a variety of different shops, restaurants and bistros.







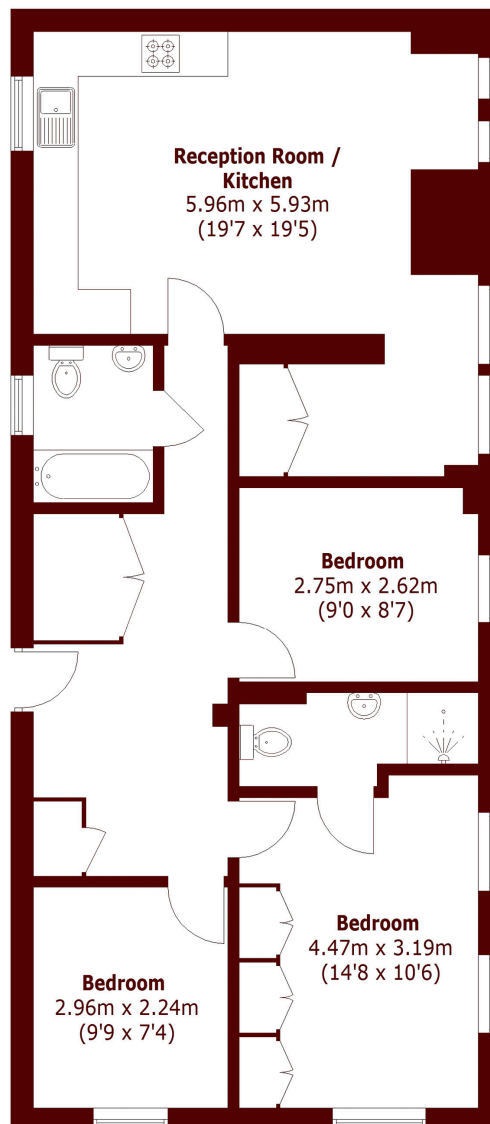
FURTHER DETAILS

This property is presented well with a modern aspect and plenty of storage space. Featuring a spacious open plan kitchen and reception room, three bedrooms and two bathrooms.

A benefit is a separate additional space behind the reception room which is ideal for a study area or play room. The study room and master bedroom have built-in bespoke high quality wardrobes.



STEP INSIDE TRAFALGAR GROVE



Total area (approx.): 85.8 sq. m (923.5 Sq. ft)

Greenwich
020 8815 2230

Energy Rating: B We aim to make our particulars both accurate and reliable. However, they are not guaranteed; nor do they form part of an offer or contract. If you require clarification on any points then please contact us, especially if you're traveling some distance to view. Please note that appliances and heating systems have not been tested and therefore no warranties can be given as to their good working order

MARSH &
PARSONS