



# Gondar Mansions

Mill Lane, West Hampstead NW6

Asking Price £750,000

A bright three bedroom, two bathroom first floor flat comprising over 1,000 square feet of this attractive period building.

The property is well located 0.6 miles from Kilburn Underground (Jubilee Line), 0.8 miles from Brondesbury Overground and just 0.4 miles from all the shops and restaurants that West End Lane offers. Sole agent.

**CHESTERTONS**





# Gondar Mansions

Mill Lane, West Hampstead NW6

- First floor flat
- Three bedrooms
- Two bathrooms
- 1,019 square feet
- 0.4 miles to West End Lane
- 0.6 miles to the Jubilee Line



**Tenure:** Leasehold 110 years remaining

**Service Charge:** £1,400 per annum

**Ground Rent:** £250 per annum

**Local Authority:** Camden

**Council Tax Band:** D

Energy Efficiency Rating		
	Current	Potential
Very energy efficient - lower running costs		
A (94-100)		
B (81-93)		83
C (69-80)	73	
D (55-68)		
E (39-54)		
F (21-38)		
Not energy efficient - higher running costs		
G (1-20)		
England, Scotland & Wales EU Directive 2002/91/EC		

### *Chestertons Hampstead Sales*

55-56 Hampstead High Street

Hampstead

NW3 1QH

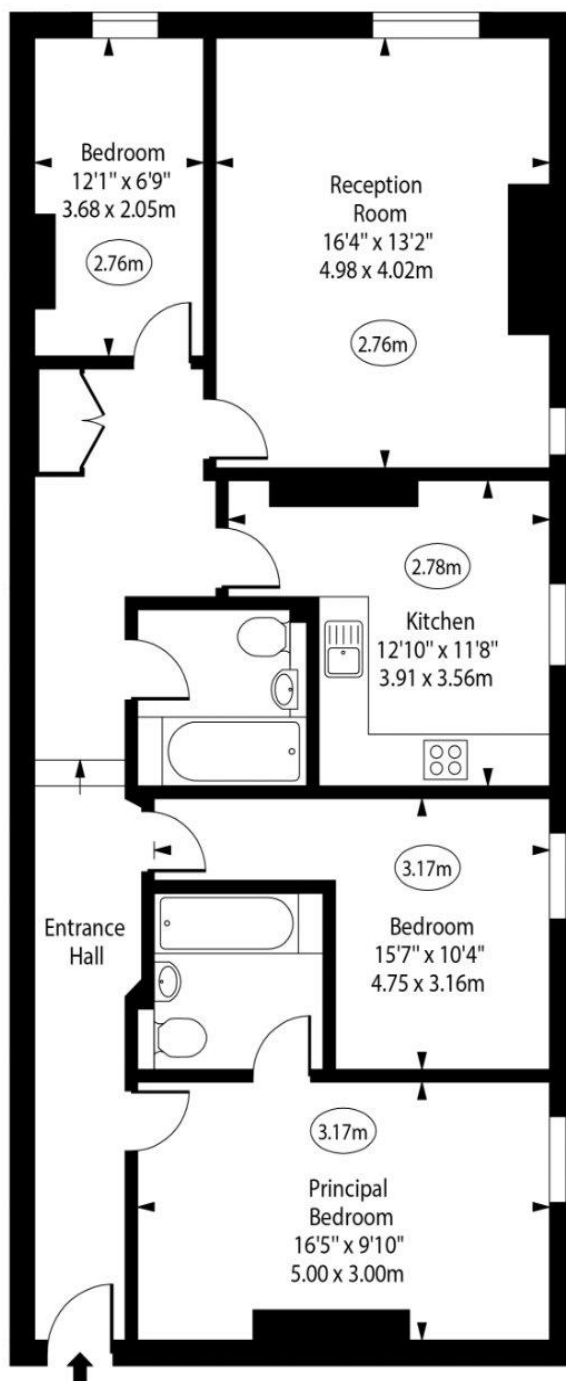
[hampstead@chestertons.co.uk](mailto:hampstead@chestertons.co.uk)

020 7794 3311

[chestertons.co.uk](http://chestertons.co.uk)

# Gondar Mansions, NW6

○ - Ceiling Height



First Floor

Approx Gross Internal Area 1019 Sq Ft - 94.67 Sq M

Every attempt has been made to ensure the accuracy of the floor plan shown. However, all measurements, fixtures, fittings, and data shown are approximate interpretations and for illustrative purposes only. Measured according to the RICS. Not To Scale.

[www.goldlens.co.uk](http://www.goldlens.co.uk)  
Prepared for Chestertons  
Ref. No. 030508R

