



Evershot Road, N4

£750,000

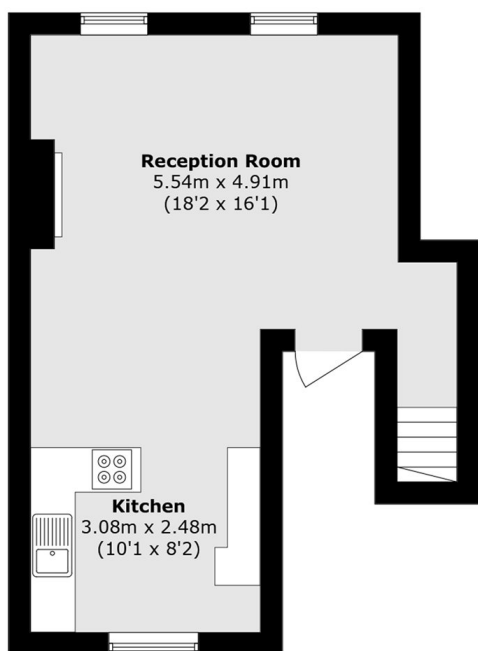
Situated on a quiet residential road, this period conversion property is arranged across three levels, offering well-proportioned living space, three bedrooms and two bathrooms.

Evershot is a quiet, tree-lined residential turning, perfectly positioned close to Finsbury Park station (Great Northern, Thameslink, Victoria and Piccadilly lines) and the great selection of shops, bars and restaurants nearby.

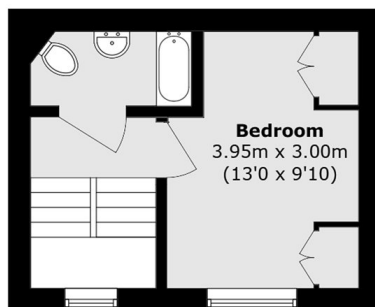
Features

- Split Level
- Period Conversion
- Good Transport Links
- Open Plan Kitchen
- Chain Free
- Leasehold

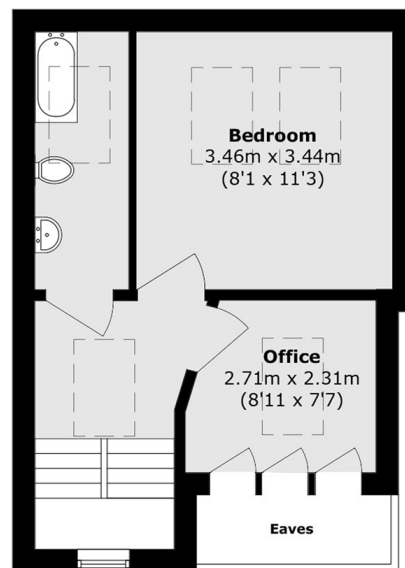
Evershot Road, London, N4



Ground Floor



First Floor



Second Floor

Total area (approx.): 84 sq. m (904.1 sq. ft)
(Excluding Eaves)