



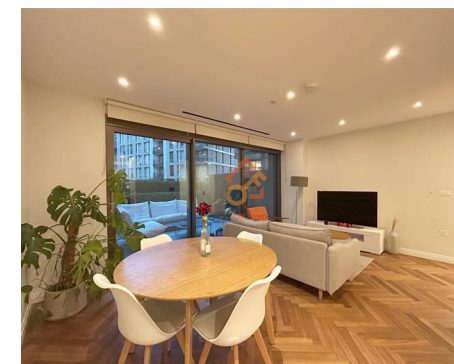
Let **UK** Home

2 Bedrooms

Flat

Located in London

£4,000 Per Month



[info@letukhome.co.uk](mailto:info@letukhome.co.uk)

<https://www.letukhome.co.uk/>

01795 358 886



# Michael Road London

SW6 2RN



Let UK Home present this modern two bedroom property in Hampton House, part of the King's Road Park development.

This property comprises a large bright kitchen with a stylishly attached dining area, a spacious living room leading to a large private terrace, two double bedrooms with wardrobes(master en-suite), a large family sized bathroom and ample storage.

Residents of this exceptional development will have exclusive use of the fitness suite, indoor swimming pool, sauna, steam room, cinema, game room, golf simulator, and private dining room. Furthermore, residents will also benefit from a concierge and an unrivalled selection of shops, bars, restaurants, leisure facilities and beautiful courtyards.

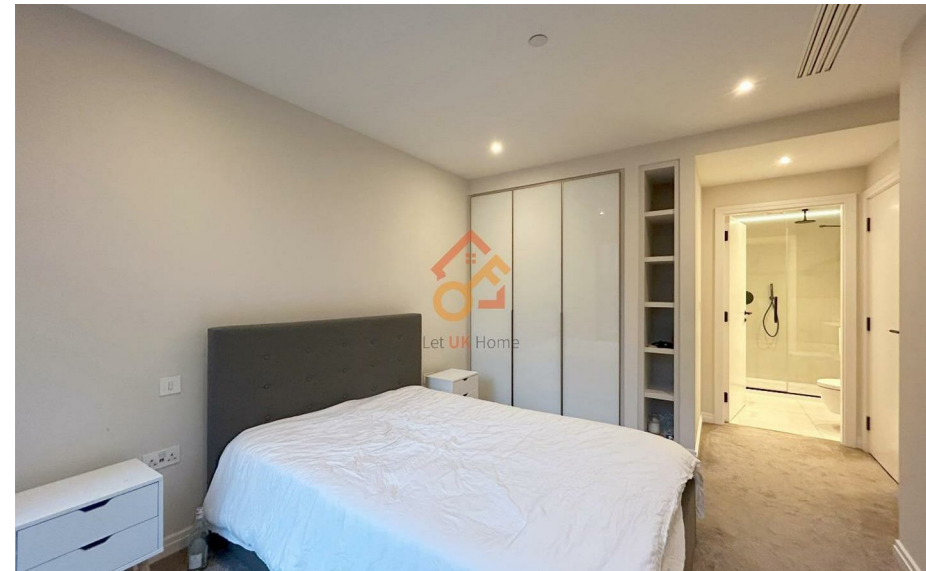
King's Road Park provides 100,000 sq. ft. of commercial space for an eclectic mix of restaurants, bars and offices and is surrounded by six acres of large green space with parks, plazas and beautiful courtyards. Situated just a few dozen meters from the iconic King's Road and close to the River Thames, King's Road Park is in one of south-west London's most desired locations. Perfectly located in Zone 2 and only a few minutes' walk from both an Underground and Overground station, this sought-after address is well connected and close to the very best that London has to offer.

# Michael Road London

£4,000 Per Month

- Ground Floor
- 24h Security
- The Gym
- Virtual Golf Suite
- Private Dining

- Concierge Service
- Swimming Pool
- Cinema & Game Room
- Residents Lounge
- EPC Rating: B



TOTAL AREA 70.0 SQ\_M 754 SQ\_FT

LONDON SW6



Let **UK** Home

3F 2 Eastbourne Terrace  
Paddington  
London  
W2 6LG

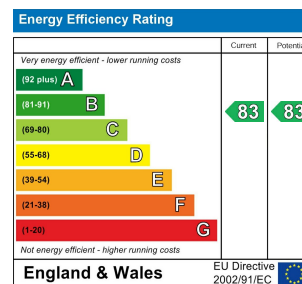
01795 358 886

info@letukhome.co.uk

**Council Tax Band: G**

**Local Authority:**

Agents Note: Whilst every care has been taken to prepare these particulars, they are for guidance purposes only. All measurements are approximate and are for general guidance purposes only and whilst every care has been taken to ensure their accuracy, they should not be relied upon and potential buyers/tenants are advised to recheck the measurements.



<https://www.letukhome.co.uk/>