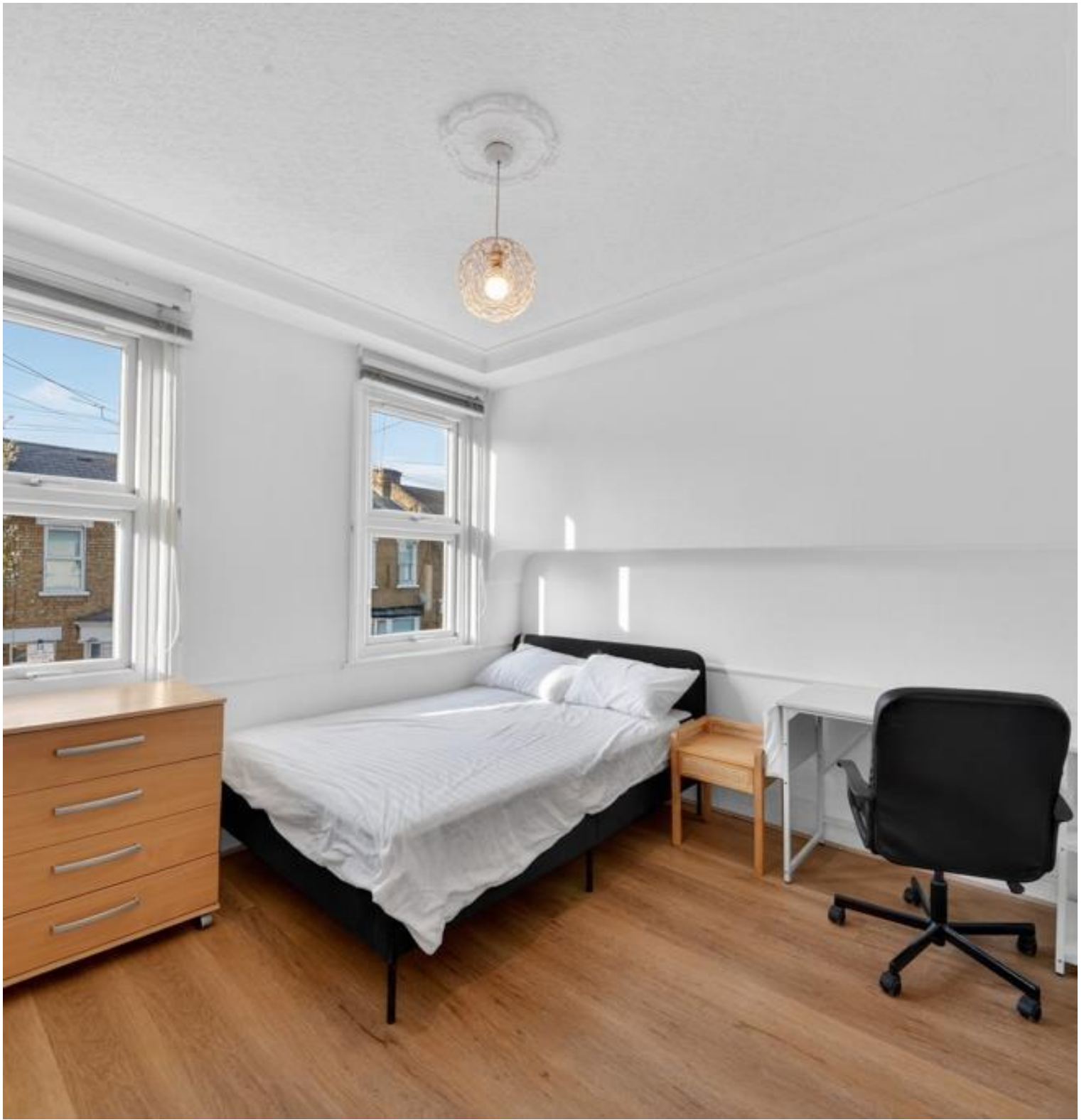




Pitchford Street, London E15
£495,000 Freehold







Description

Situated on Pitchford Street in the heart of Stratford, this two-bedroom freehold terraced house offers approximately 706 sq ft of living space across two floors. The property presents an excellent opportunity for those seeking a solid investment or their first step onto the property ladder in one of East London's most dynamic and well-connected neighbourhoods.

The ground floor features a spacious reception room extending the full depth of the property, providing a bright and versatile living area. A separate kitchen offers practical space for dining, while a contemporary bathroom completes this level. The property also benefits from a private north-facing courtyard garden with paved areas, painted brick walls and timber fencing.

On the first floor, two spacious double bedrooms benefit from abundant natural light, with the principal bedroom offering generous proportions.

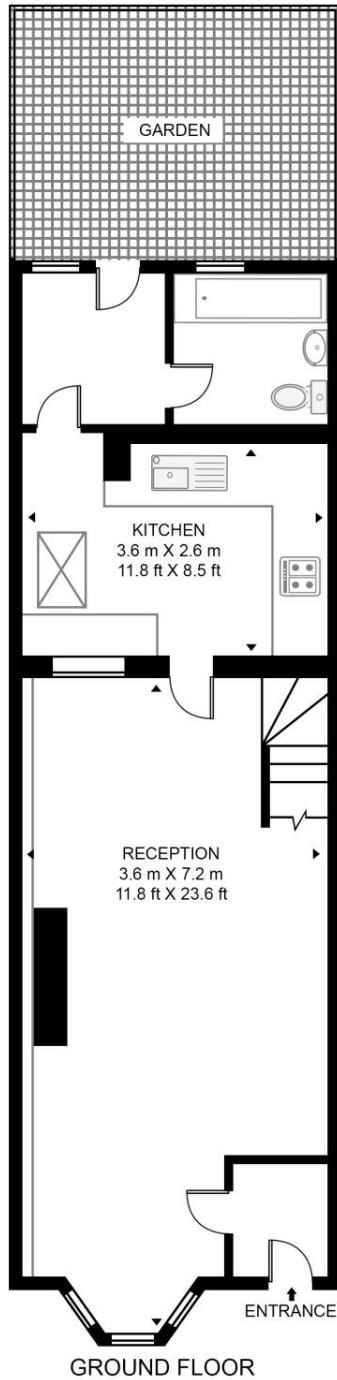
- Chain free freehold house
- Two double bedrooms
- Private garden
- Double glazing
- Within a short walk of Stratford station & Westfield shopping centre
- Moments from Stratford Park
- Excellent investment opportunity
- EPC Rating D

Floorplan

706 sq ft | 66 sq m

PITCHFORD STREET

APPROXIMATE GROSS INTERNAL FLOOR AREA 706 SQ.FT (65.6 SQ.M)



HDVA

This floor plan has been defined by the RICS Code of Measurement. This floor plan and all others are for approximate representative purposes only and upon usage is agreed to as such by the client.

WWW: hdvirtualart.com | TEL: 0203.974.1567 | EMAIL: info@hdvirtualart.com

Stratford
5 Station Street,
London E15 1DA
+4420 3147 1500
Lettingsstratford@eu.jll.com

Urban living, your way.

jll.co.uk/residential

© 2019 Jones Lang LaSalle IP, Inc. All rights reserved. All information contained herein is from sources deemed reliable; however, no representation or warranty is made to the accuracy thereof.

