



## 1 Park View, Newton Abbot

£350,000 Freehold

Detached Bungalow • Driveway Parking • Front and Rear Gardens • Heat Pump • Solar Panels • Kitchen/Diner • Spacious Living Room • Three Double Bedrooms • Great Location

### Contact Us...

📞 01626 365055

✉ newtonsales@chamberlains.co

🏠 1 Bank Street  
Newton Abbot TQ12 2JL

  
chamberlains  
the key to your home



Situated in the desirable village of Aller, near Newton Abbot, this deceptively spacious three double bedroom detached bungalow is offered to the market chain free and enjoys far-reaching countryside views extending towards the stunning landscape of Dartmoor.

The property is approached via an entrance porch, providing a practical space for coats and footwear, and leading through into a particularly generous main lounge. This light-filled reception room forms the heart of the home, offering a comfortable and versatile living space with ample room for both seating and dining areas. Large windows frame the impressive open outlook, creating a real sense of connection to the surrounding countryside.

From the lounge, doors radiate to the principal accommodation. The bungalow offers three well-proportioned double bedrooms, each providing flexibility for use as sleeping accommodation, guest rooms, or a home office. Two of the bedrooms are positioned to the rear of the property, enjoying a peaceful aspect over the garden, while the third bedroom is located to the front and benefits from a skylight window, allowing natural light to flood the space. This room also features a pocket door leading down to a useful basement area, ideal for additional storage.

The kitchen is fitted with a range of wood-effect wall and base units, complemented by cream worktops and a stainless steel sink with drainer. Dual aspect windows ensure the room is bright throughout the day, while there is ample space for a range of freestanding appliances. The kitchen also benefits from two large storage cupboards, providing excellent additional pantry space. A door leads through to a rear porch, which offers further practicality and provides direct access to the garden.

The property also benefits from a bathroom and a separate WC, enhancing convenience for family living and guests alike.

In recent years, the home has undergone significant improvements with the upgrading of its heating system. This now includes an energy-efficient heat pump, radiators, and the addition of solar panels, helping to reduce running costs while improving the property's environmental credentials.

Externally, the bungalow is set within a pleasant plot, with garden space offering excellent potential for outdoor enjoyment, whether relaxing, gardening, or entertaining. To the front, the property benefits from a driveway providing off-road parking, adding to the overall practicality and appeal. The position of the home allows it to take full advantage of the surrounding rural views, while still being within easy reach of the amenities and transport links.

## Measurements

Lounge/Diner - 19'0 × 20'0 (5.79m x 6.10m)

Kitchen - 18'5 x 8'6 (5.49m x 2.44m)

Bedroom - 14'10 x 9'10 (4.27m x 2.74m)

Bedroom - 11'5 x 9'9 (3.35m x 2.74m)

Bedroom - 18'10 × 7'05 (5.49m x 2.13m)

Bathroom - 6'3 x 5'9 (1.83m x 1.53m)



## Useful Information

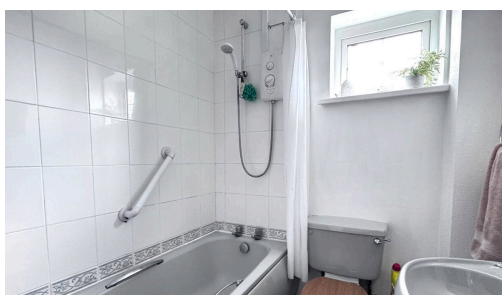
Council Tax band D (£2,714.78  
2026/2027)

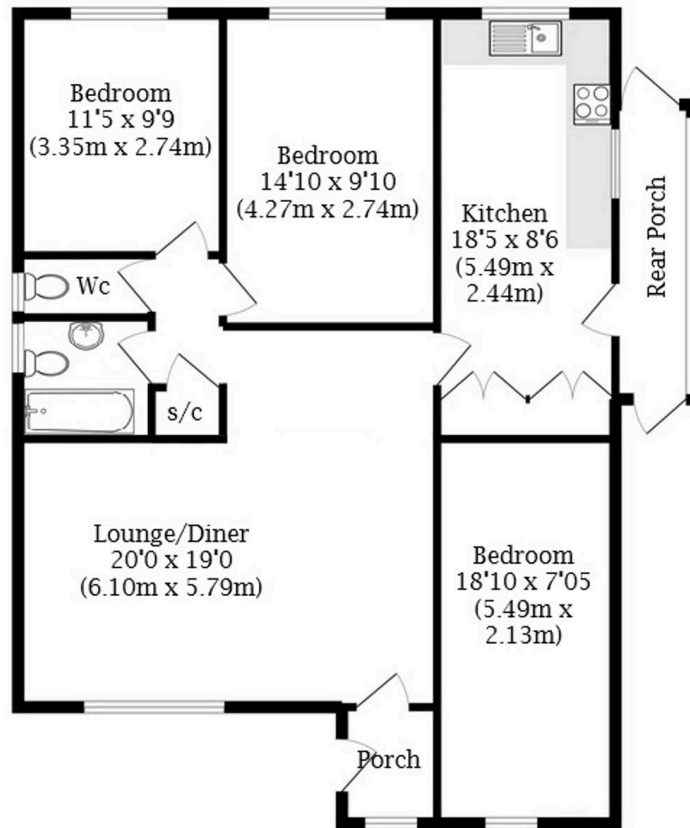
Broadband Speed Ultrafast 1800 Mbps  
(According to OFCOM)

Mains Electric, Water and Sewerage  
Supplied

EPC Rating TBD

The Property is Freehold





Whilst every attempt has been made to ensure the accuracy of the floorplan contained here, measurements of doors, windows, rooms etc are approximate and no responsibility will be taken for any error.

