



Cartwright Street, E1

£373 Per week

Video Available. Second floor two bedroom apartment situated in a private development on Cartwright Street. Comprises hall with wood flooring, separate kitchen, bathroom, double bedroom, master bedroom with en-suite and lounge with access to balcony.

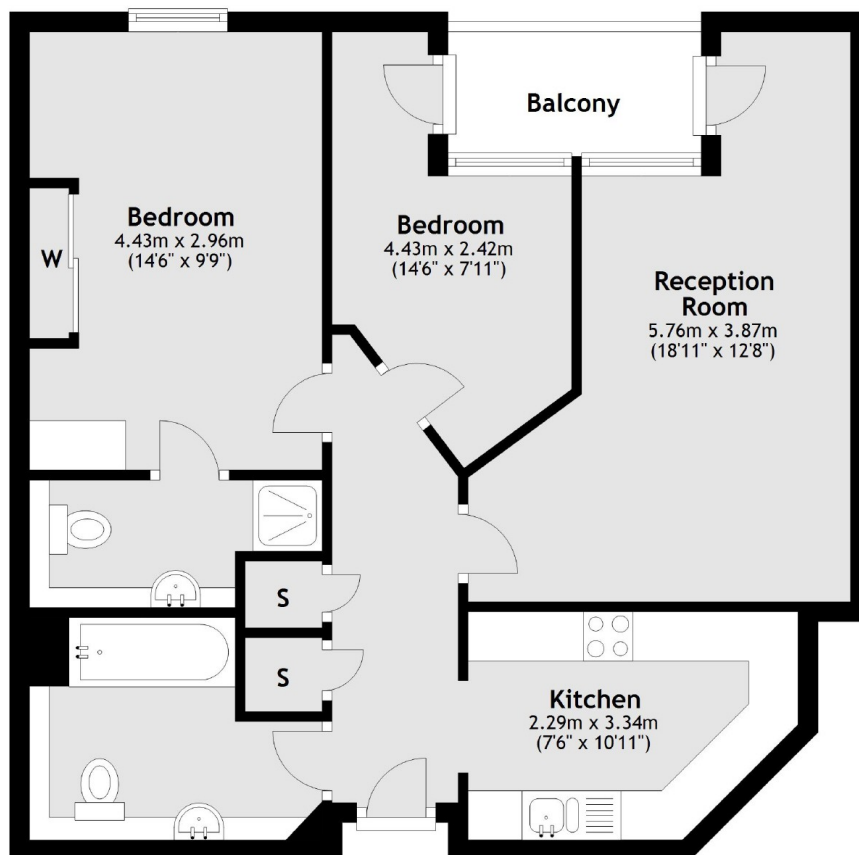
Cartwright Street is a short walk away from Tower Hill with excellent transport links and an array of restaurants, bars and amenities.

Features

- Two Bedroom Apartment
- Two Bathrooms
- Wood Floors
- Furnished
- Secure Gated Parking
- Excellent Location

Cartwright Street,
London, E1

Second Floor



Main area: Approx. 61.0 sq. metres (656.2 sq. feet)
Plus balconies, approx. 3.8 sq. metres (40.4 sq. feet)

Contact

To arrange a viewing call our office on the number below or visit our website.



Energy Rating: . We aim to make our particulars both accurate and reliable. However they are not guaranteed; nor do they form part of an offer or contract. If you require clarification on any points then please contact us, especially if you're traveling some distance to view. Please note that appliances and heating systems have not been tested and therefore no warranties can be given as to their good working order.