



Bridgewater Avenue, SW6

£715 Per week

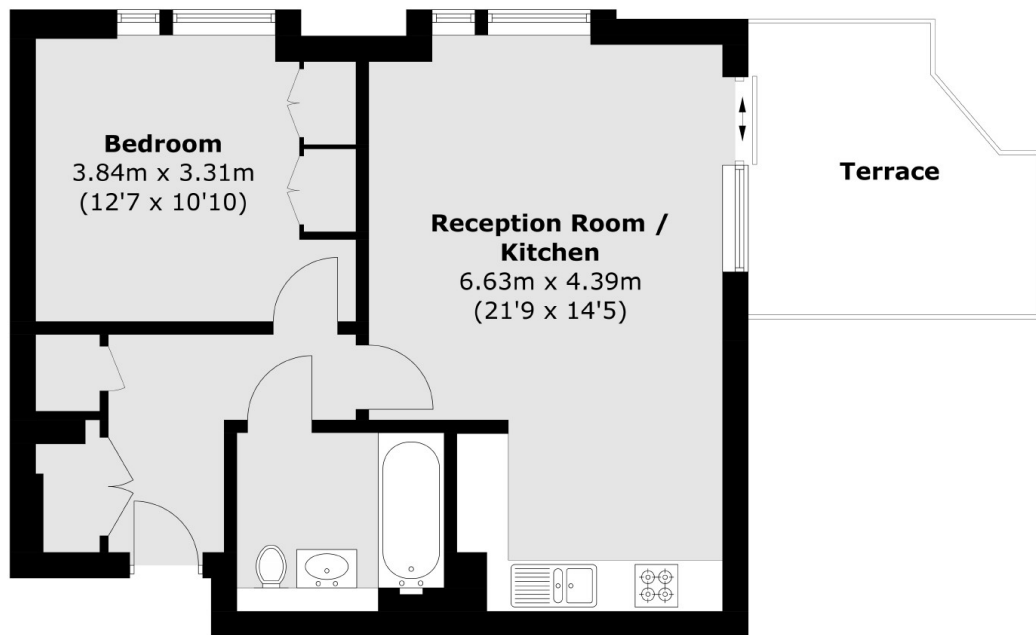
A stunning one-bedroom apartment, beautifully finished to an exceptional specification throughout, situated within the highly sought-after and prestigious Chelsea Creek development.

Chelsea Creek is ideally located for the local amenities of Imperial Wharf while there is a wide range of shops, bars and boutiques available on King's Road.

Features

- One Double Bedrooms
- Gym And Pool Access
- Unfurnished
- Private Balcony
- 24 Hour Concierge
- Imperial Wharf Station

Bridgewater Avenue, London, SW6



Twenty Fifth Floor

Total area (approx.): 51.9sq. m (558.6 sq. ft)
Terrace: 10.0 sq. m (107.6 sq. ft)