



CHARLES KNIGHT  
ESTATE AGENTS



## 20B Hafton Road

, London, SE6 1LP

£1,695 Per month

Charles Knight Estate Agents are pleased to present this charming two-bedroom top-floor Victorian conversion, situated on the sought-after Hafton Road in Catford.

The accommodation comprises a bright and spacious living room featuring a large bay window that floods the room with natural light, two generously sized double bedrooms, a separate galley kitchen with direct access to a private roof terrace, and a modern three-piece bathroom suite.

The private roof terrace offers a fantastic outdoor space, perfect for relaxing, entertaining guests, or enjoying a morning coffee.

### Key Features:

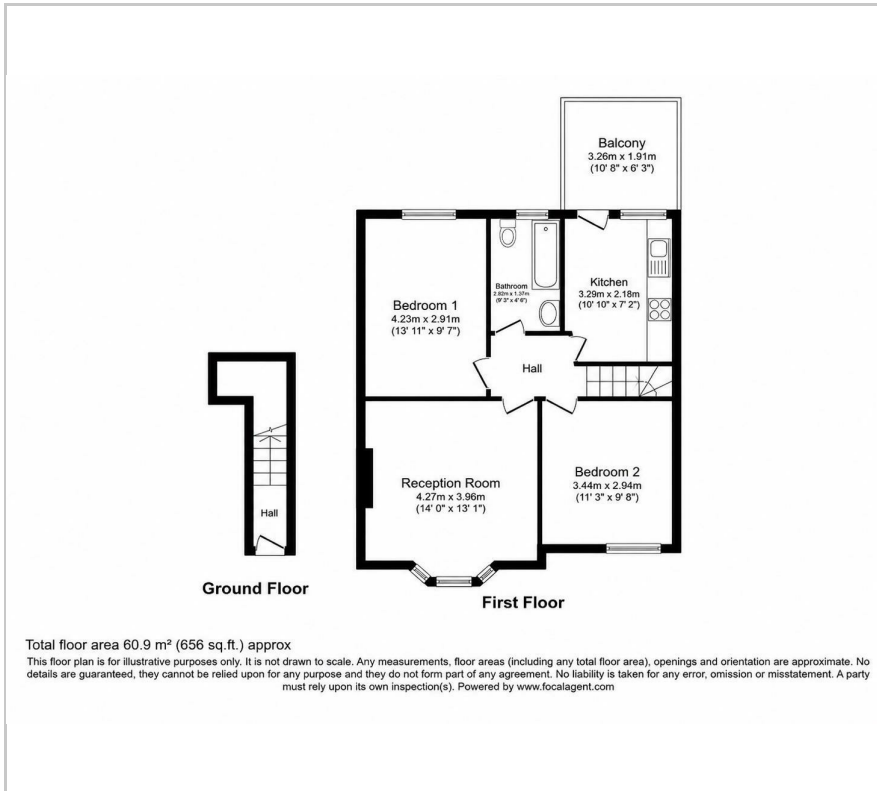
- Chain free
- Top floor Victorian conversion
- Two double bedrooms
- Spacious living room with bay window
- Separate fitted kitchen
- Private roof terrace
- Three-piece bathroom suite

### Viewing

Please contact our Lewisham Office on 02088 524441 if you wish to arrange a viewing appointment for this property or require further information.



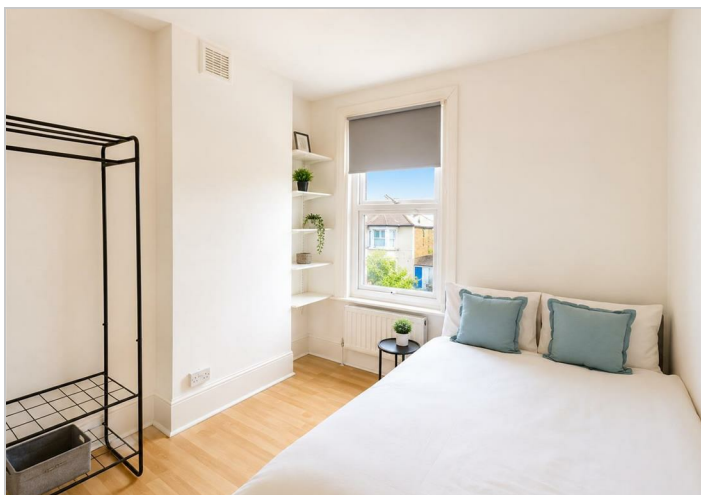
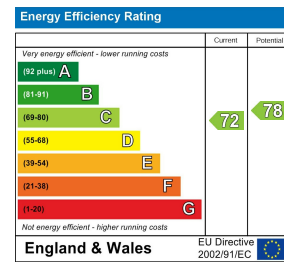
## Floor Plan



## Area Map



## Energy Efficiency Graph



These particulars, whilst believed to be accurate are set out as a general outline only for guidance and do not constitute any part of an offer or contract. Intending purchasers should not rely on them as statements of representation of fact, but must satisfy themselves by inspection or otherwise as to their accuracy. No person in this firm's employment has the authority to make or give any representation or warranty in respect of the property.