



FIELDEND ROAD, SW16

£750,000

- Four bedrooms
- Off-street parking
- Downstairs cloakroom
- Extended kitchen diner
- Two bathrooms
- Energy rating: C





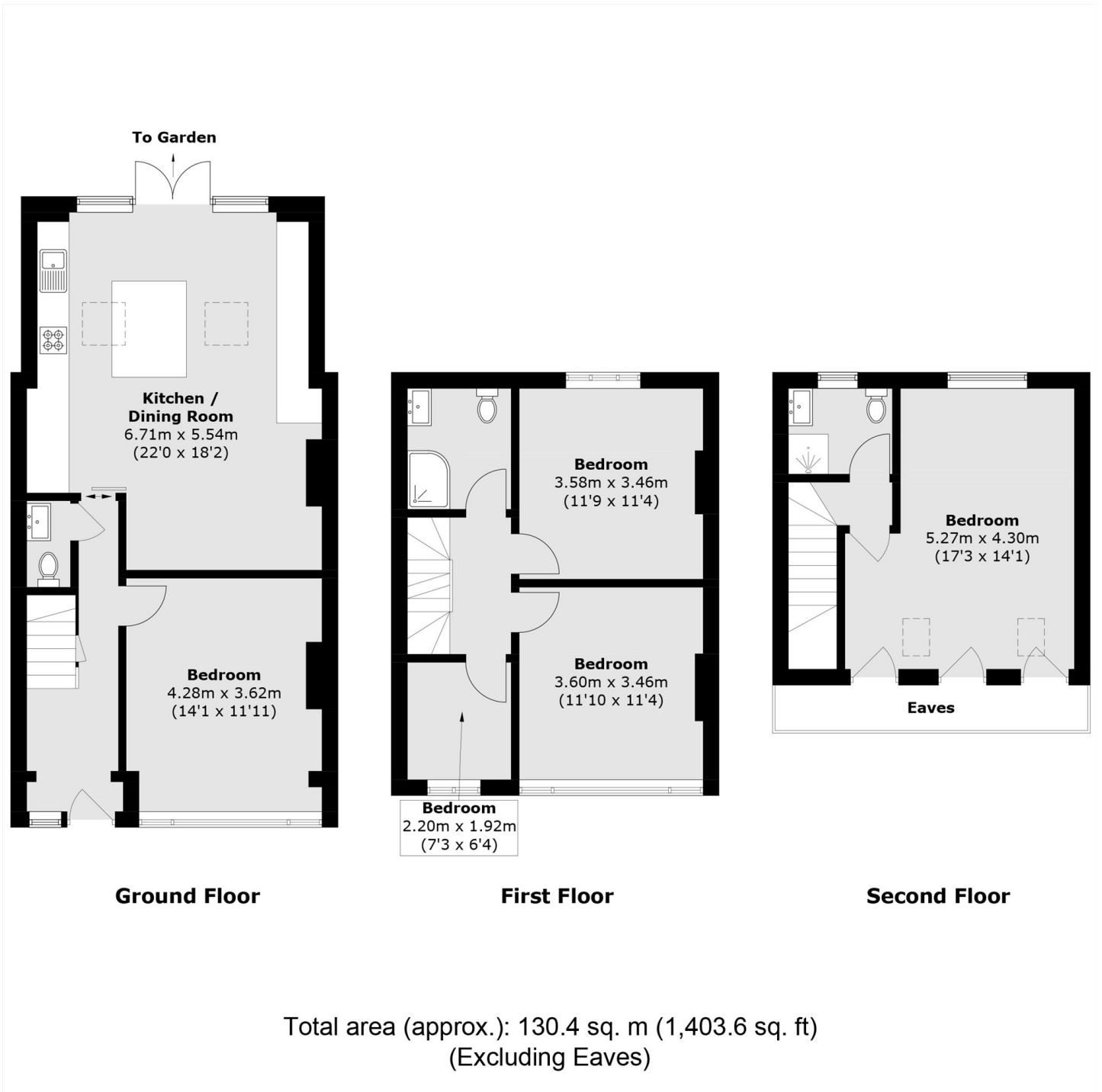
ABOUT THE HOME

A well presented four bedroom terrace with extended kitchen diner leading onto a private garden inclusive of a large storage workshop. The property also features off street parking, two bathrooms as well an additional downstairs cloakroom.

Fieldend Road is very conveniently placed within Streatham Vale for easy access to Streatham Common station and is only a short walk away from Granton primary school, with an Ofsted rating of Outstanding. Commuters can access bus routes into Brixton and beyond from Streatham High Road and swift connections from Streatham common station to London Victoria & London Bridge.






JACKSONS STREATHAM

1-3 De Montfort Parade,
 Streatham High Road,
 Sales: 020 8487 3179
 Lettings: 020 8487 3180

Energy Rating: D We aim to make our particulars both accurate and reliable. However they are not guaranteed; nor do they form part of an offer or contract. If you require clarification on any points then please contact us, especially if you're traveling some distance to view. Please note that appliances and heating systems have not been tested and therefore no warranties can be given as to their good working order.