



Hollydale Road, SE15

£3,250 Per calendar month

A stunningly presented newly refurbished three-bedroom Victorian terraced house located on a very popular residential road in Peckham. The property offers spacious rooms and a large rear garden. Suitable for sharers.

This fantastic house comprises of three large rooms, a huge, bright and airy double reception room, an eat-in kitchen, two bathrooms. This property also has a fantastic large private garden.

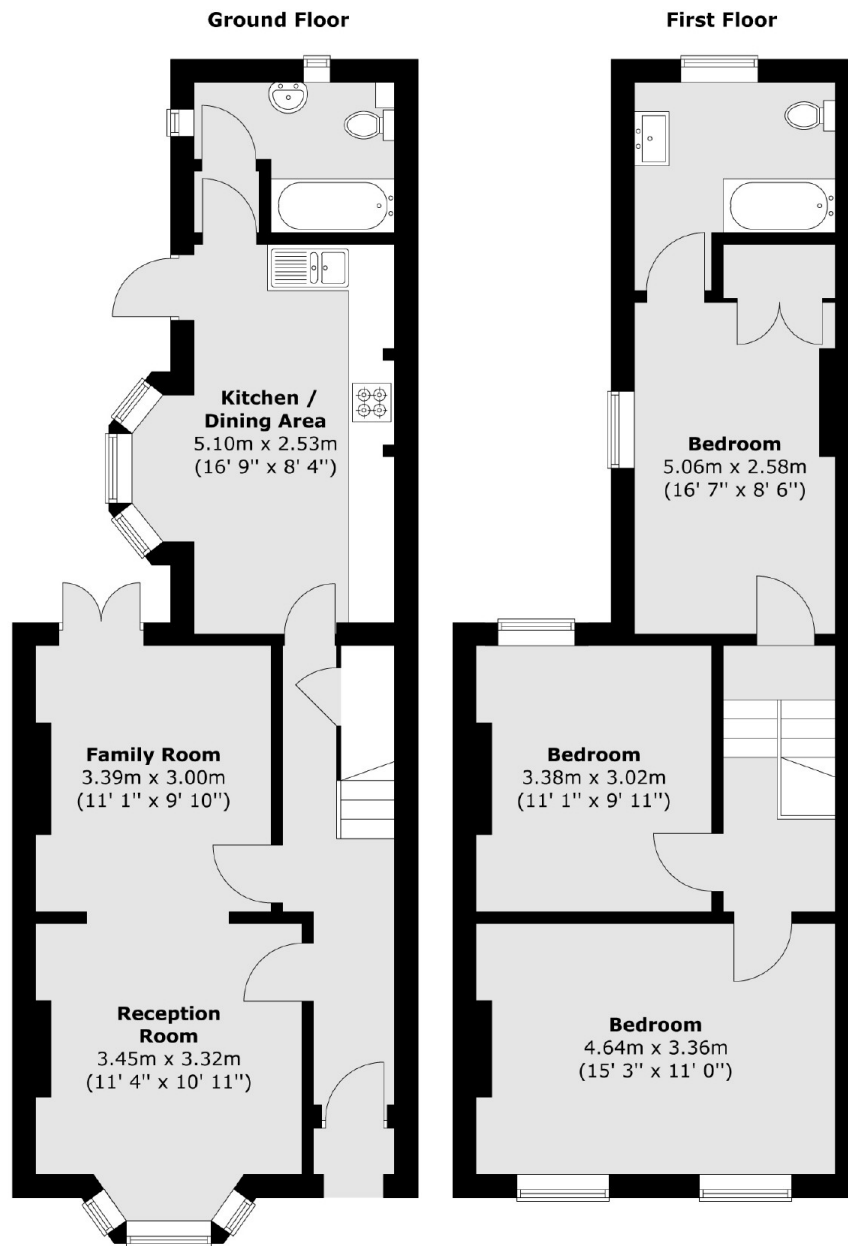
The location offers fantastic access to Nunhead, Peckham, Peckham Rye, Brockley and everything this stunning area has to offer. Nunhead Lane and Rye Lane are within a short walking distance, offering an impressive array of shops, bars and restaurants. Transport links are provided via Queens Road for the Thames Link, Nunhead station for direct links to London Victoria and Peckham Rye for the overground.

From Queens Road (zone 2) there is the east London Line (Canada Water, Shoreditch, Hoxton, Dalston Junction and Highbury & Islington) and mainline trains to London Bridge and Victoria. There is also the choice of Nunhead station (also Zone 2) also offers trains to

Features

- 3 Bedroom House
- HMO Approved
- Newly Refurbished
- Private Garden
- Spacious
- Amazing Location
- Close to two stations

Hollydale Road, London, SE15



Total area (approx.) : 103.4 sq. m (1113 sq. ft)