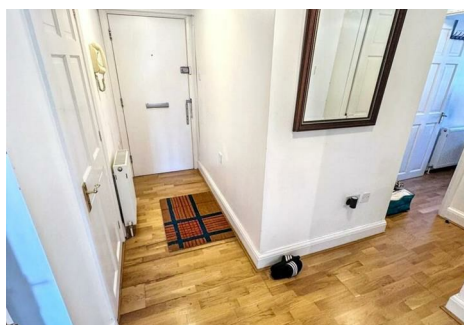


est 1979

 Jeremy
Leaf & Co.



Hendon Lane, London

£2,300 Per Month

- Ground floor flat
- Private balcony
- Gas central heating
- 0.3 miles Finchley Central tube station
- Viewing highly recommended
- Two bedrooms
- Communal garden
- Double glazed
- Shops just 0.1 miles away
- Off Street Parking Space

863 High Road, London, N12 8PT
020 8446 4295

property@jeremyleaf.co.uk
<https://www.jeremyleaf.co.uk/>

Hendon Lane, London, N3 1SF

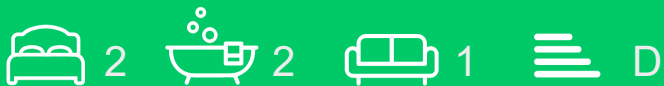
Nestled in the vibrant area of Hendon Lane, this ground floor flat is situated within a purpose-built block, offering both comfort and convenience. The property features two well-proportioned bedrooms, making it an ideal choice for small families, couples, or individuals seeking extra space.

One of the standout features of this flat is the balcony, which provides some private outside space. Residents will also benefit from access to a communal garden.

The flat is equipped with gas central heating and double glazing. Its prime location is a significant advantage, being just 0.3 miles from Finchley Central tube station, which offers excellent transport links to central London. Additionally, local shops and amenities are conveniently located a mere 0.1 miles away.

This property presents a wonderful opportunity for those looking to embrace a comfortable lifestyle in a well-connected area of London. With its appealing features and prime location, it is certainly worth considering for your next home.

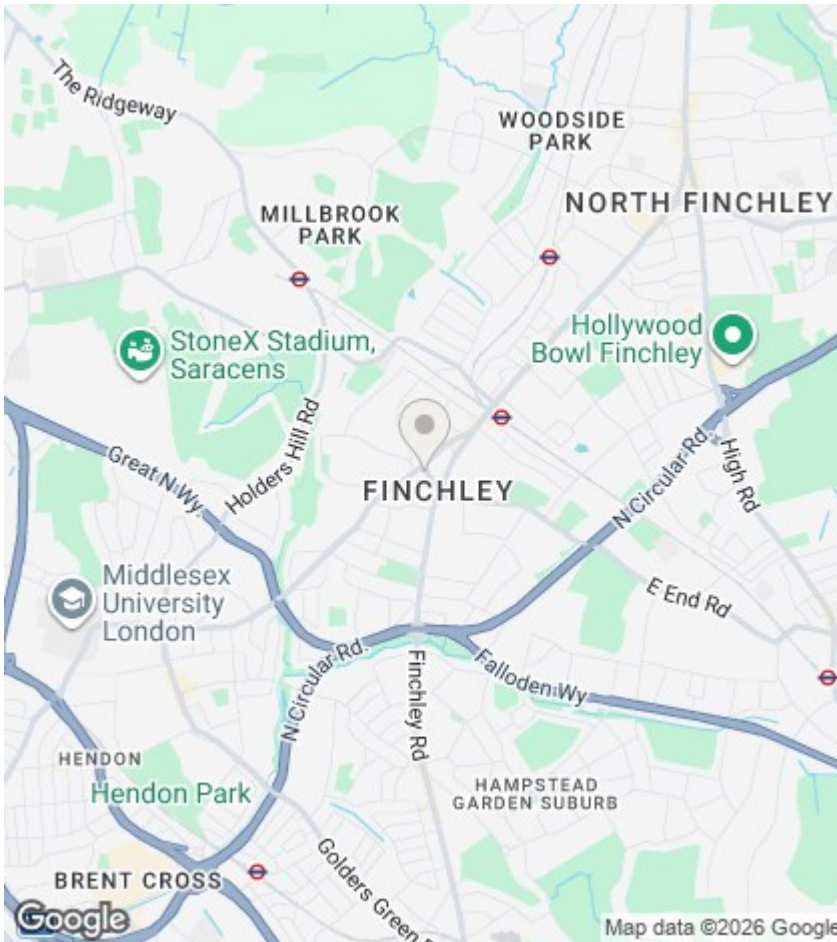
Available Furnished or Unfurnished from 1st July 2026.



Council Tax Band: E







Directions

Viewings

Viewings by arrangement only. Call 020 8446 4295 to make an appointment.

EPC Rating:

D

Energy Efficiency Rating		Current	Potential
Very energy efficient - lower running costs			
(92 plus) A			
(81-91) B			
(69-80) C			
(55-68) D		67	74
(39-54) E			
(21-38) F			
(1-20) G			
Not energy efficient - higher running costs			
England & Wales		EU Directive 2002/91/EC	