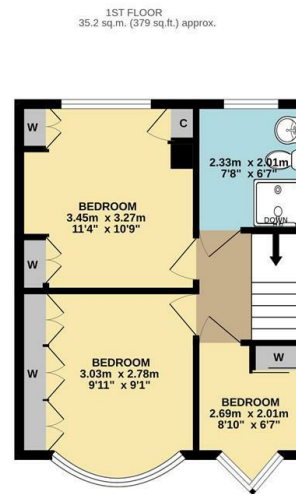
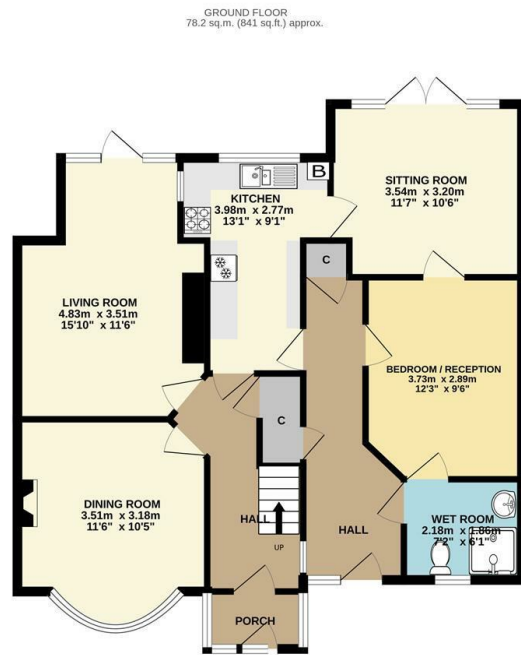




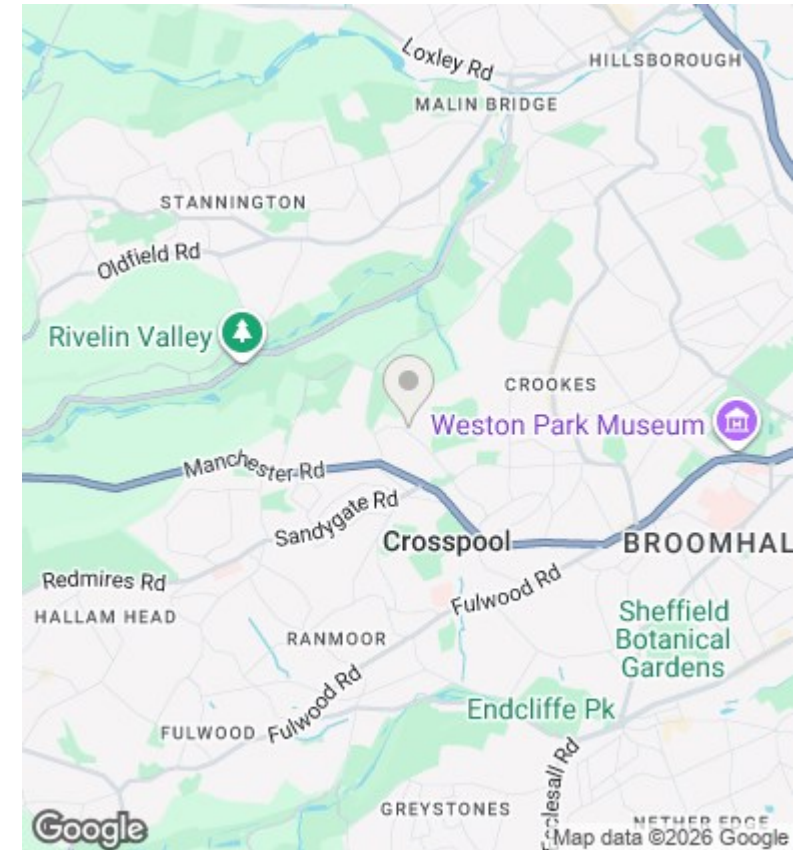
92 Marsh Lane, Sheffield, S10 5NP

Offers Over £425,000

- No onward chain
- Larger than normal plot
- Off street parking
- Extended semi-detached home
- Backs on to fields
- Within catchment area of popular schools
- Incredible potential
- Stunning views
- Short walk to local shops, cafes, pubs and restaurants



TOTAL FLOOR AREA : 113.4 sq.m. (1220 sq.ft.) approx.
Measurements are approximate. Not to scale. Illustrative purposes only
Made with Metropix ©2026



Directions

Viewings

Viewings by arrangement only. Call 01142 687777 to make an appointment.

Council Tax Band

C

EPC Rating:

C

Energy Efficiency Rating		
	Current	Potential
Very energy efficient - lower running costs		
(92 plus) A		
(81-91) B		
(69-80) C	70	77
(55-68) D		
(39-54) E		
(21-38) F		
(1-20) G		
Not energy efficient - higher running costs		
England & Wales	EU Directive 2002/91/EC	