



108 Hempland Close

Corby, NN18 8LT



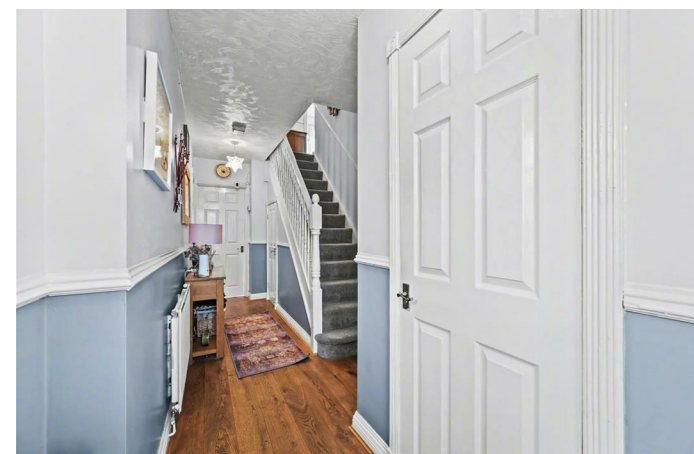
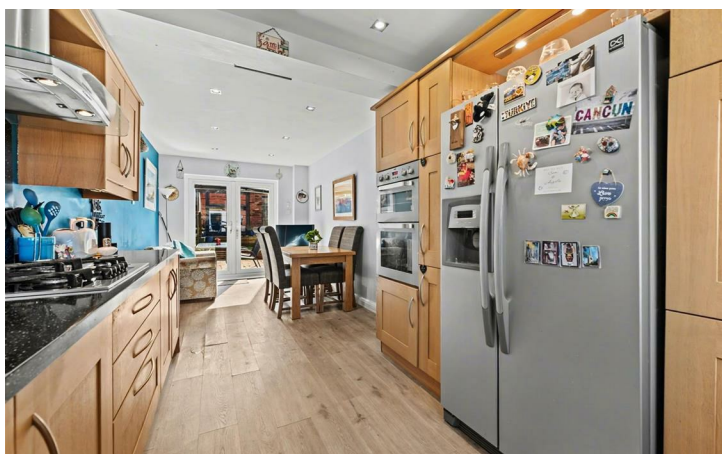
Simpson West

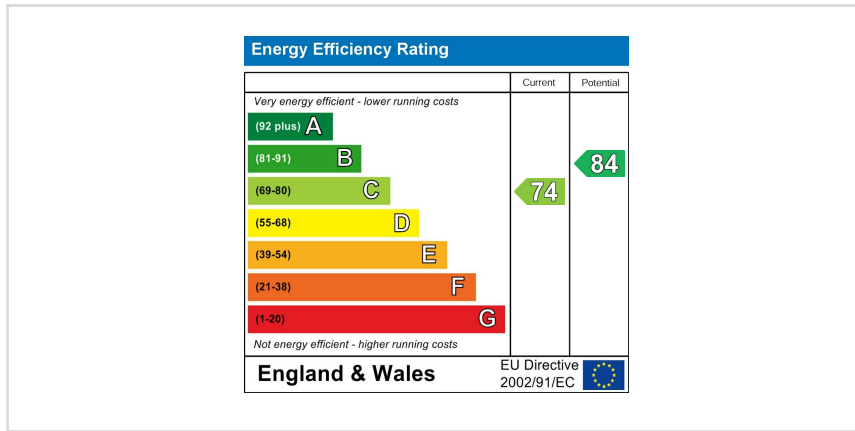
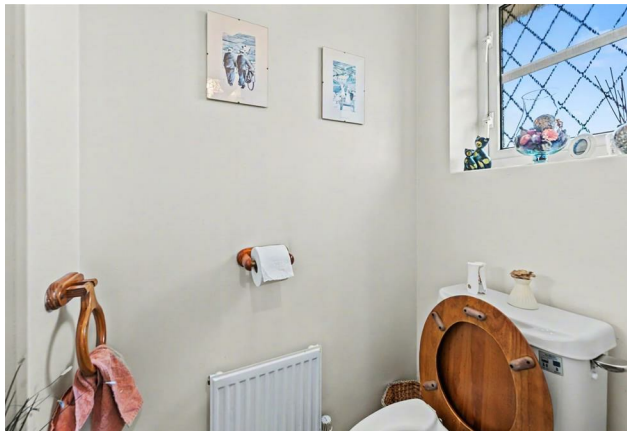
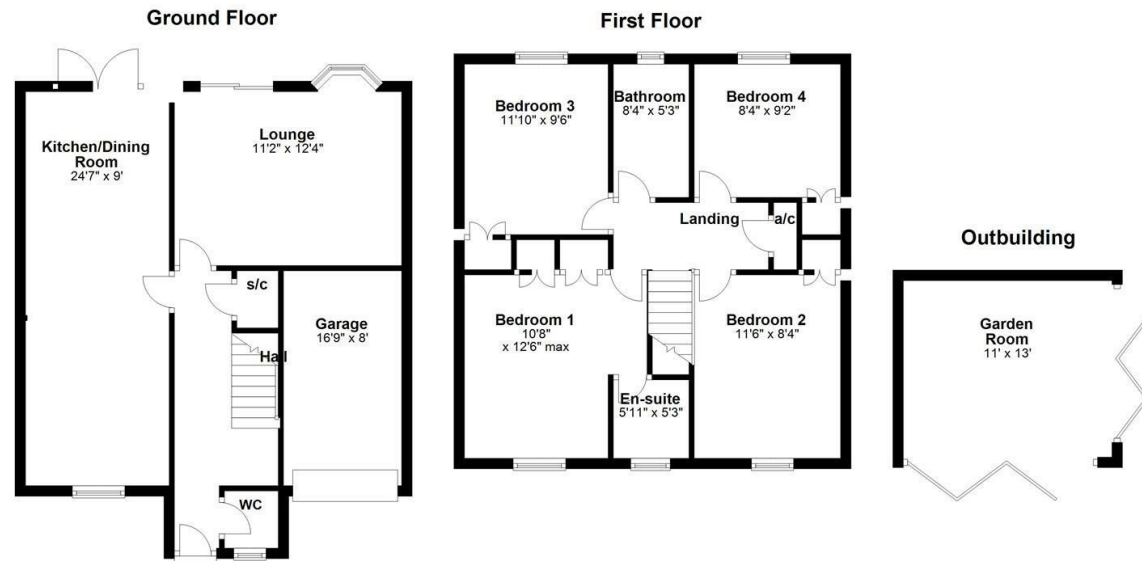
Situated in a highly desirable Village of Great Oakley area of Corby and within walking distance of local amenities and well regarded schools, this spacious family home offers well balanced accommodation throughout. The property is entered via a generous hallway with a guest cloakroom. The bright and airy sitting room features a bay window and sliding doors opening onto the patio, allowing for an abundance of natural light. Beautifully refitted kitchen is well equipped with a range of wall and base units, including integrated appliances and flows seamlessly into the dining area, which benefits from doors leading out to the garden. To the first floor is a spacious landing giving access to four well-proportioned double bedrooms, all with built-in storage. The principal bedroom benefits from an en-suite shower room, while a modern family bathroom serves the remaining bedrooms. Externally, the property offers driveway parking for several vehicles, an integral garage and a beautifully maintained low maintenance rear garden. In addition there is a large entertainment room which would also be ideal for use as a home office or studio.

Council Tax band- D
EPC rating- C

£350,000

 4  3  nul





When you buy with Simpson West, you know **you'll be in safe hands**. From the moment you walk through our doors, we'll make you **feel truly welcome**. Our sales consultants and financial advisors will take you through **every step of the process**, offering **free expert advice** along the way, from help choosing the right mortgage and insurance through to finding your conveyancer. And if you need help selling your home too, **with over 20 years of local experience, you can trust us to get you moving**.



**Simpson
West**

Making Every
Journey Personal



01536 202007

info@simpsonwest.co.uk

<https://www.simpsonwest.co.uk/>

64 Corporation Street, Corby, Northants, NN17 1NH