



HORSLEY COURT, SW1P

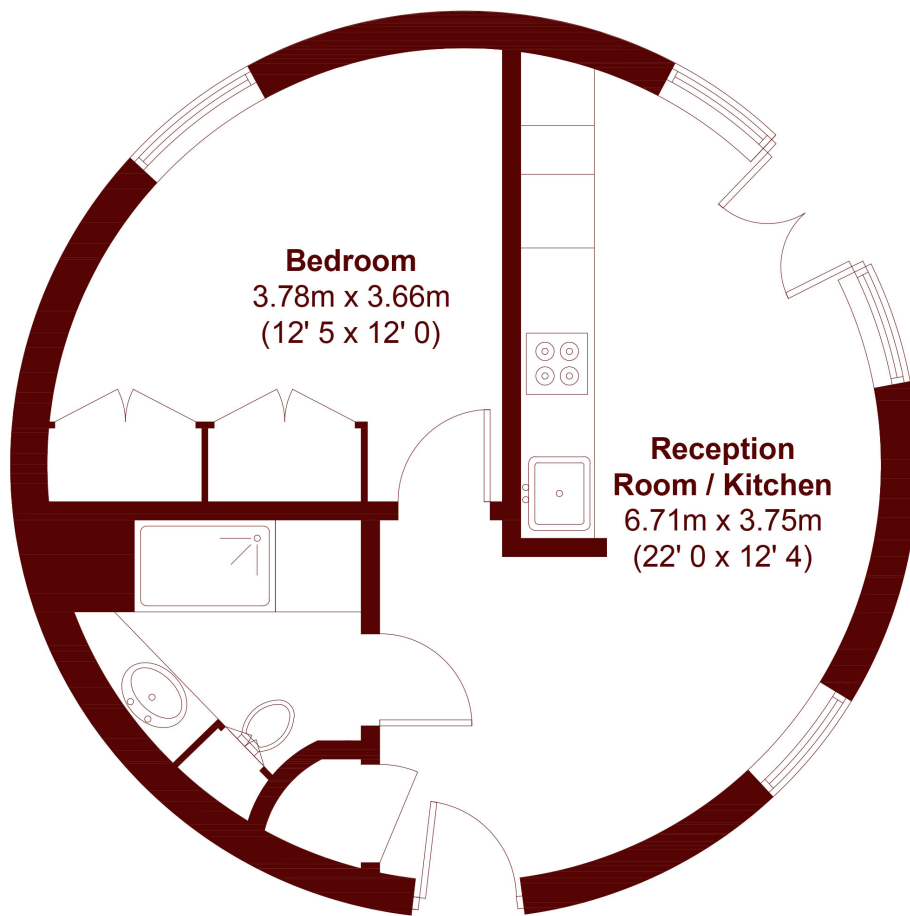
£600 per week

This fantastic one bedroom flat is located in a sought-after secure modern development in the heart of Westminster. The apartment comprises open plan reception room with fully-fitted kitchen, modern bathroom and

Double bedroom
Fitted kitchen
Modern development

Gym
Porter
Energy rating: d

STEP INSIDE HORSLEY COURT



Ground Floor

APPROX. GROSS INTERNAL FLOOR AREA
394 SQFT / 36.6 SQM

Pimlico & Westminster
020 7828 8100

Energy Rating: We aim to make our particulars both accurate and reliable. However, they are not guaranteed; nor do they form part of an offer or contract. If you require clarification on any points then please contact us, especially if you're traveling some distance to view. Please note that appliances and heating systems have not been tested and therefore no warranties can be given as to their good working order

**MARSH &
PARSONS**