



## Bedford Road

**£6,500 Per Month**

Cosway Estates are pleased to offer for rent this BRAND NEW extended stunning six bedroom semi-detached family home, set over three floors, situated in great location in the catchment area of Mill Hill County and Courtland Schools in Mill Hill. This property has undergone complete refurbishment. This property consists of a large stylish fully fitted kitchen which is open-plan to reception room; separate reception room; six good size bedrooms (all with en-suites); extra shower room/WC on ground floor; office space and utility room. This property also comes with a good size rear garden and garage. AVAILABLE MID-JULY 2026. Viewings highly advised.

### Viewing

Please contact our Mill Hill Office on 02089590011 if you wish to arrange a viewing appointment for this property or require further information.



6



7



3



D

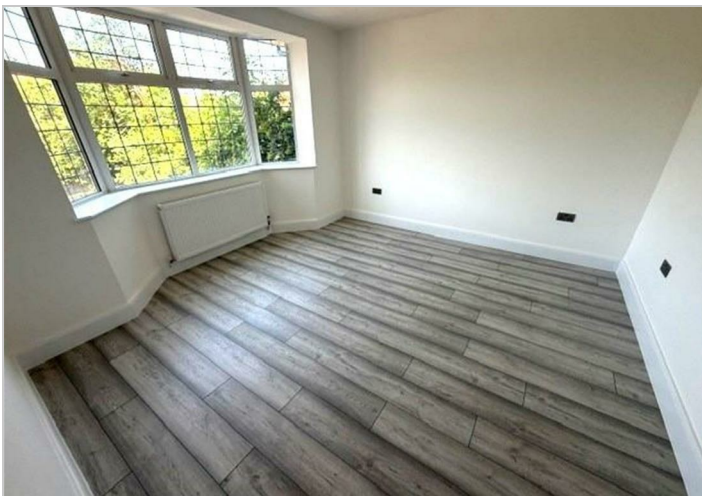
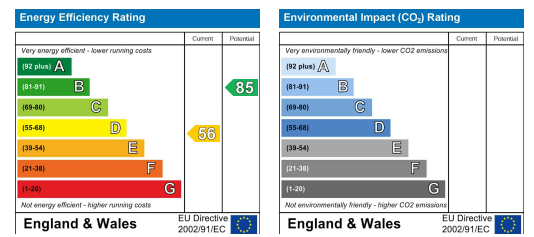
## Floor Plan



## Area Map



## Energy Efficiency Graph



These particulars, whilst believed to be accurate are set out as a general outline only for guidance and do not constitute any part of an offer or contract. Intending purchasers should not rely on them as statements of representation of fact, but must satisfy themselves by inspection or otherwise as to their accuracy. No person in this firm's employment has the authority to make or give any representation or warranty in respect of the property.