



3 Dunham Close, Southwell, NG25 0JU

Offers Over £350,000

Tel: 01636 816200

 **RICHARD
WATKINSON
PARTNERS**

Surveyors, Estate Agents, Valuers, Auctioneers

- Attractive Chalet Style Home
- Chain Free
- Dining Kitchen
- Office/Ground Floor Bedroom
- 2 1st Floor Double Bedrooms
- Convenient Cul-De-Sac Setting
- Scope to Update/Extend (STP)
- Large Lounge/Diner
- Ground Floor Shower Room
- Lovely Mature Gardens, Driveway, Garage

Occupying a popular cul-de-sac setting, this attractive chalet style home offers excellent scope for buyers to update and potentially extend a home to their own tastes and specifications.

The property is offered for sale with the advantage of 'no chain' and is conveniently located, close to the centre of town and its wealth of amenities.

The property would benefit from a general scheme of refurbishment, whilst also offering potential for enlargement and reconfiguration (subject to planning).

The property occupies a mature plot with attractive gardens to the front and rear, includes driveway parking to the front of the attached garage and enjoys a good-sized rear garden affording a south-easterly aspect.

The accommodation comprises an entrance hall, a large lounge/diner across the front of the property, a dining kitchen, ground floor shower room and office/ground floor bedroom whilst to the 1st floor are 2 double bedrooms.

Viewing highly recommended.

ACCOMMODATION

A uPVC double glazed entrance door with double glazed side panel leads into the entrance hall.

ENTRANCE HALL

With a central heating radiator and stairs rising to the first floor with a useful understairs storage cupboard with coat hooks.

LOUNGE DINER

A large reception room across the rear of the property with uPVC double glazed window and double glazed sliding patio doors leading onto the rear garden. There are two central heating radiators, access from both the entrance hall and the dining kitchen and featuring an Adam style fireplace with decorative oak effect surround housing a coal effect gas fire.

DINING KITCHEN

Fitted with a range of base and wall cabinets with cupboards and drawers, rolled edge worktops and a stainless steel single drainer sink with mixer tap. Tiling for splashbacks and

built-in appliances including an oven and microwave oven by Neff, a four zone electric hob by Neff and an extractor hood over. There is space and plumbing for a washing machine plus a uPVC double glazed window to the front aspect, one to the side aspect, a central heating radiator and a uPVC double glazed door to the outside.

HOME OFFICE/GROUND FLOOR BEDROOM

A versatile space with a central heating radiator and a uPVC double glazed window to the front aspect.

SHOWER ROOM

A three piece shower room including a back-to-wall toilet and a vanity wash basin with mixer tap and cupboards below. There is a quadrant style shower cubicle with glazed sliding doors and electric shower plus fully tiled walls, spotlights to the ceiling, tiled flooring, a towel radiator and a uPVC double glazed obscured window to the front aspect.

FIRST FLOOR LANDING

With an access hatch to the roof space and a cupboard housing the Ideal combination boiler.

BEDROOM ONE

A good sized double bedroom with a central heating radiator, a uPVC double glazed window to the rear aspect and access to the eaves.

BEDROOM TWO

A double bedroom with a central heating radiator, a uPVC double glazed window to the front aspect and access to the eaves.

DRIVEWAY PARKING

A composite driveway to the front of the property provides driveway parking for two to three vehicles and in turn leads to the attached single garage with an up and over door and personal door into the garden at the rear.

GARDENS

The property occupies a delightful and mature plot including a shaped lawned frontage interspersed with planted beds. The rear garden enjoys a south-easterly aspect and is enclosed with a combination of timber panelled fencing and hedgerows. There is a sizeable paved patio area with a shallow flight of steps leading to a shaped lawn at the rear of the garden. A useful timber shed is included in the sale.

COUNCIL TAX

The property is registered as council tax band D.

VIEWINGS

By appointment with Richard Watkinson & Partners.

ADDITIONAL INFORMATION

Please see the links below to check for additional information regarding environmental criteria (i.e. flood assessment), school Ofsted ratings, planning applications and services such as

broadband and phone signal. Note Richard Watkinson & Partners has no affiliation to any of the below agencies and cannot be responsible for any incorrect information provided by the individual sources.

Flood assessment of an area: _

<https://check-long-term-flood-risk.service.gov.uk/risk#>

Broadband & Mobile coverage:-

<https://checker.ofcom.org.uk/en-gb/broadband-coverage>

School Ofsted reports:-

<https://reports.ofsted.gov.uk/>

Planning applications:-

<https://www.gov.uk/search-register-planning-decisions>

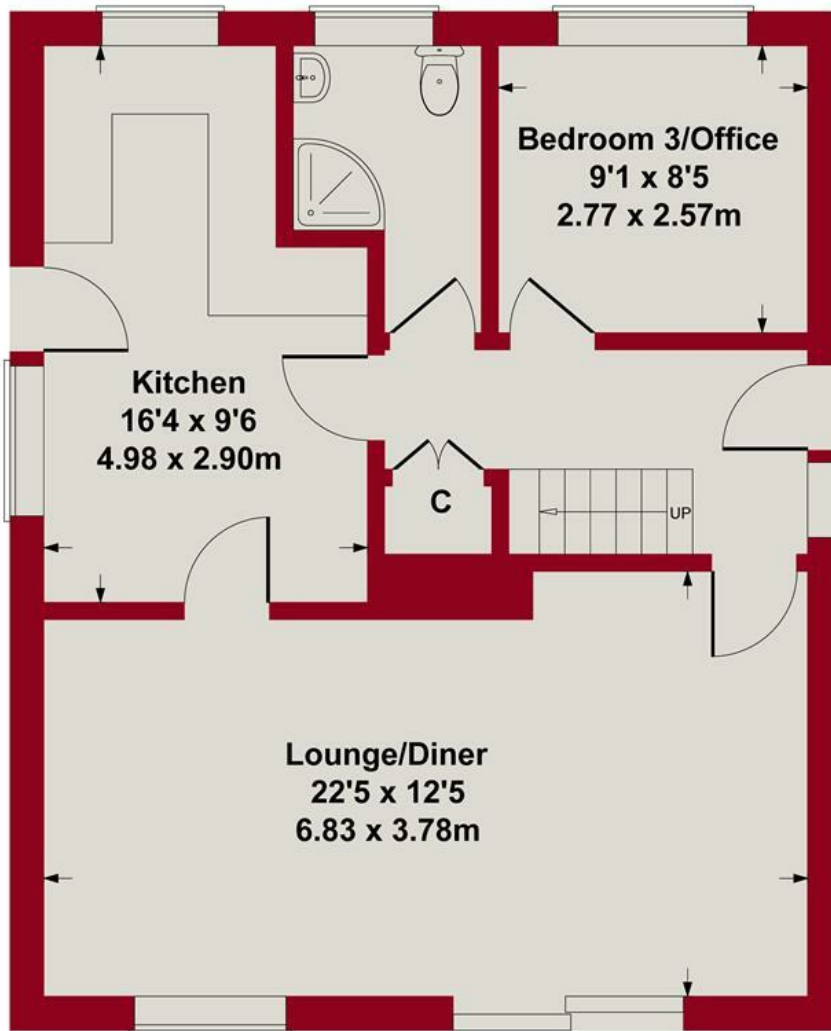
Once an offer is accepted, there will be a small charge for our biometric Anti Money Laundering compliance check of £14 + VAT per purchaser.



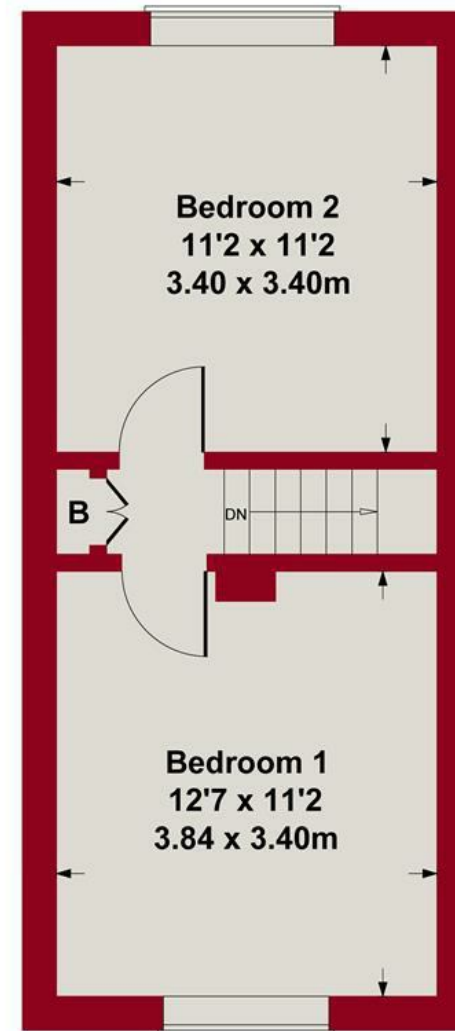




Approximate Gross Internal Area
937 sq ft - 87 sq m



GROUND FLOOR

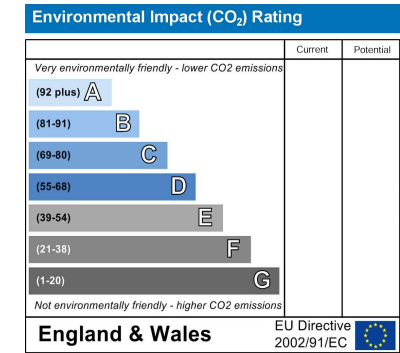
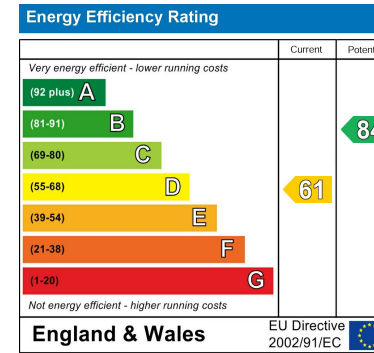


FIRST FLOOR

Whilst every attempt has been made to ensure the accuracy of the floor plan contained here, measurements of doors, windows, rooms and any other items are approximate and no responsibility is taken for any error, omission, or mis-statement. This plan is for illustrative purposes only and should be used as such by any prospective purchaser or tenant. The services, systems and appliances shown have not been tested and no guarantee as to their operability or efficiency can be given.

Copyright V360 Ltd 2025 | www.houseviz.com





These particulars, whilst believed to be accurate are set out as a general outline only for guidance and do not constitute any part of an offer or contract. Intending purchasers should not rely on them as statements of representation of fact, but must satisfy themselves by inspection or otherwise as to their accuracy. No person in this firm's employment has the authority to make or give any representation or warranty in respect of the property. Any fixtures and fittings not mentioned in these details are excluded from the sale price. No services or appliances which may have been included in these details have been tested by the selling agent and therefore cannot be guaranteed to be in good working order.

As part of the service we offer we may recommend ancillary services to you such as mortgage advice, solicitors and surveyors which we believe will help with your property transaction. We wish to make you aware that should you decide to proceed we may receive a referral fee or equivalent. This could be a fee, commission, payment or other reward. We will not refer your details unless you have provided consent for us to do so. You are not under any obligation to provide us with your consent or to use any of these services. You are also free to choose an alternative provider.

Thinking of selling? For a FREE no obligation quotation call 01636 816200



Richard Watkinson & Partners is the trading name of Richard Watkinson Ltd.
Registered in England. Ltd Registration number: 07140024

20 King Street,
Southwell NG25 0EH
Tel: 01636 816200
Email: southwell@richardwatkinson.co.uk



Surveyors, Estate Agents, Valuers, Auctioneers