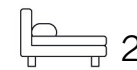




Living  
made  
better

Roma Corte  
Lewisham, SE13 7GS



£2,200 PCM

# Roma Corte, Lewisham, SE13 7GS

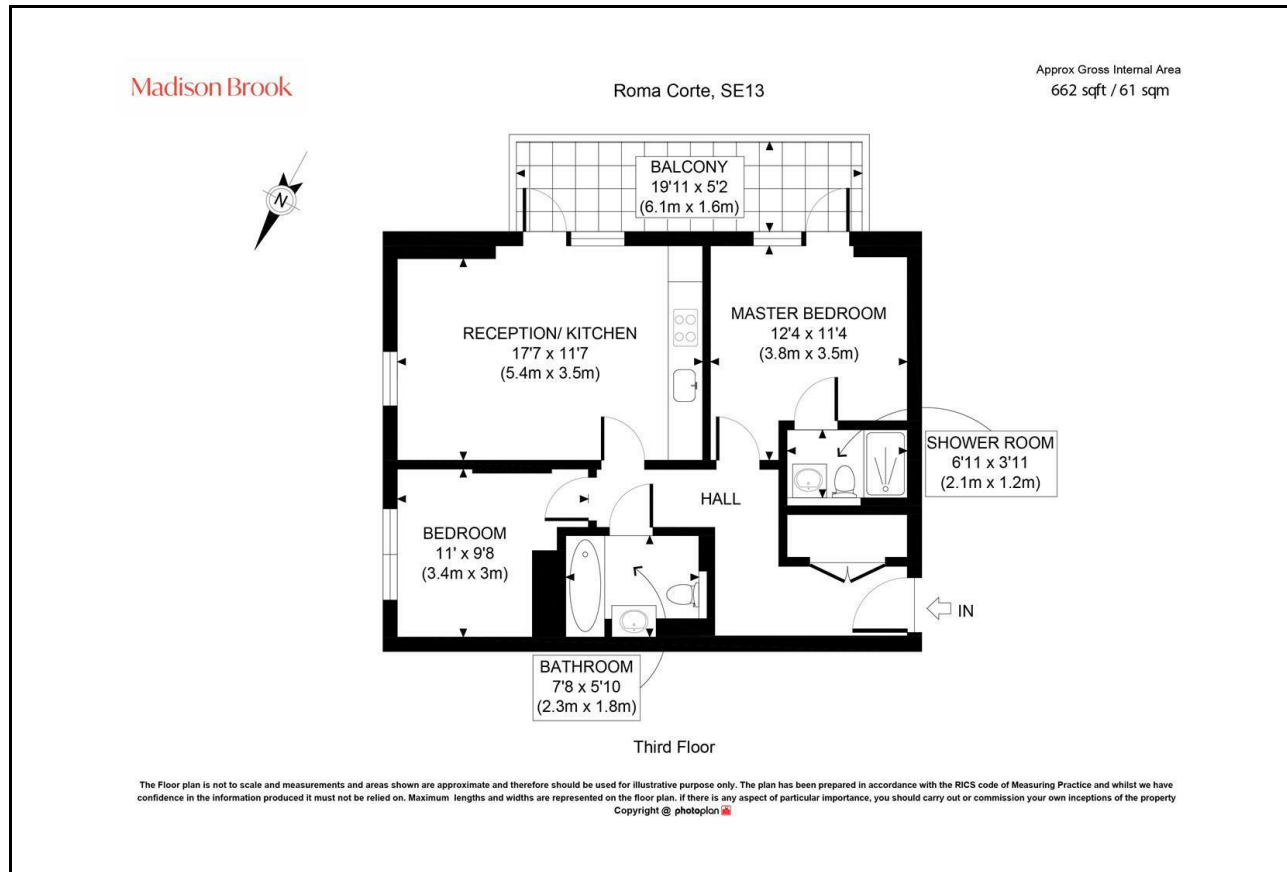
Madison Brook

## Property Summary

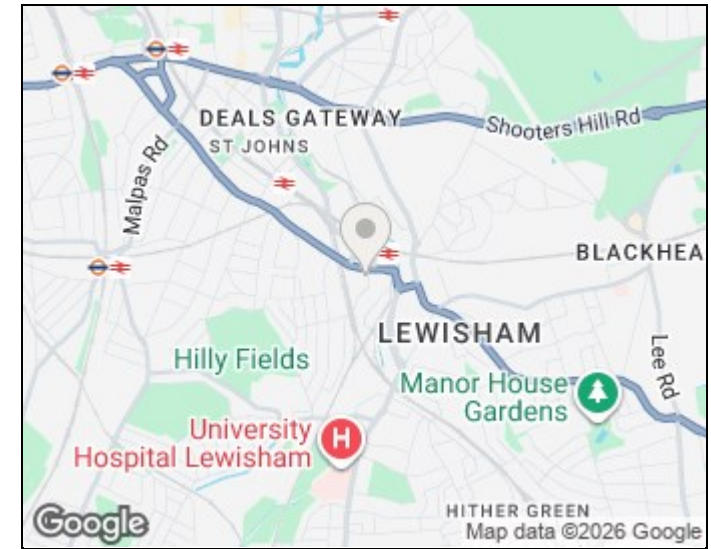
This spacious two bedroom apartment is located on the third floor of Roma Corte, which benefits from a 24hr concierge & forms part of the sought after Renaissance Development. The apartment also comprises an open-plan reception room and kitchen with access to the south-facing balcony and a second East facing aspect window with double glazing throughout the flat. There are two double bedrooms, one with an en suite bathroom, a spacious hallway with storage and a main guest bathroom.

This property also includes access to a roof terrace. Located just moments from Lewisham Station (DLR and Overground), and Cornmill Gardens with the outdoor gym.

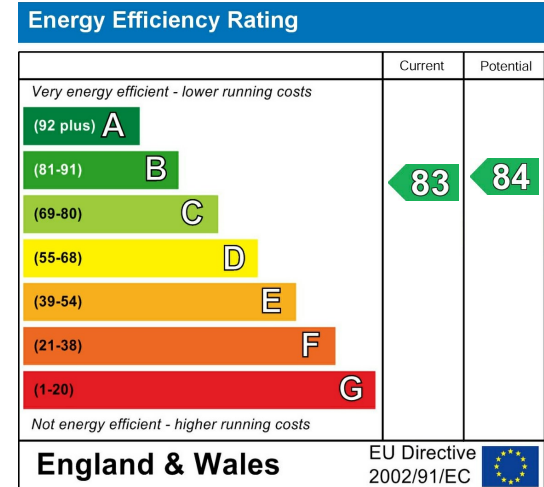
## Floorplan



## Area Map



## Energy Efficiency Graph



These particulars, whilst believed to be accurate are set out as a general outline only for guidance and do not constitute any part of an offer or contract. Intending purchasers should not rely on them as statements of representation of fact, but must satisfy themselves by inspection or otherwise as to their accuracy. No person in this firm's employment has the authority to make or give any representation or warranty in respect of the property.

43 Loampit Vale, Lewisham, London, SE13 7FT

Tel: 020 3946 6200 Email:  
lewisham@madisonbrook.com  
<https://madisonbrook.com/>