



London Road, Maidstone, Kent, ME16 0HF

Guide Price £350,000 - £375,000



**** GUIDE PRICE: £350,000 - £375,000 ** A 3 BEDROOM COX STYLE SEMI-DETACHED FAMILY HOME IN NEED OF MODERNISATION, SITUATED ON THE ALLINGTON/MAIDSTONE BORDERS. ****

Page & Wells are delighted to bring to the market this rarely available 3 bedroom home which offers huge potential and has no onward chain implications. The ground floor accommodation features an entrance hall, spacious sitting room, separate dining room, bedroom 3/ study, en-suite toilet, bathroom and kitchen. Whilst on the first floor you will find 2 double bedrooms. Externally there is a driveway providing off-road parking and a long established rear garden. Like many of the other properties in the neighbourhood, there is ample scope to add a significant extension, subject to the usual planning consents being obtained. Modernisation is required throughout, however, we feel this has been accounted for within the most realistic asking price.

Contact Page & Wells King Street office 01622756703

EPC: D

Tenure: Freehold

Council Tax Band: D



Key Features

- * NO FORWARD CHAIN
- * Modernisation required
- * 3 Bedrooms
- * 2 Reception Rooms
- * En-suite toilet
- * Long established rear garden
- * Driveway
- * Popular Allington area
- * Close to amenities

Ground Floor:

Entrance Hall

Bathroom

Lounge 14'1 x 11'9 (4.29m x 3.58m)

Dining Room 13'4 x 12'4 (4.06m x 3.76m)

Kitchen 10'3 x 7 (3.12m x 2.13m)

Bedroom Three/Study 10'6 x 7'7 (3.20m x 2.31m)

En-suite Toilet

First Floor:

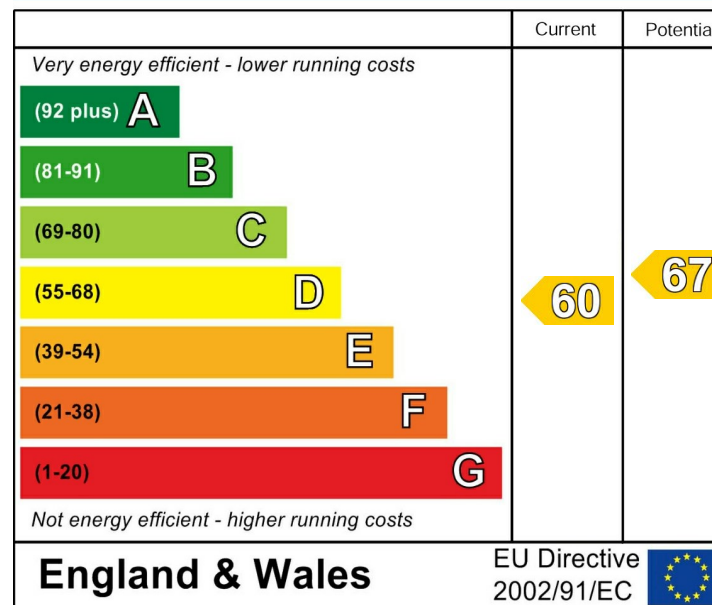
Bedroom One 14'2 x 11'9 (4.32m x 3.58m)

Bedroom Two 11'10 x 9'1 (3.61m x 2.77m)

Extrnally:

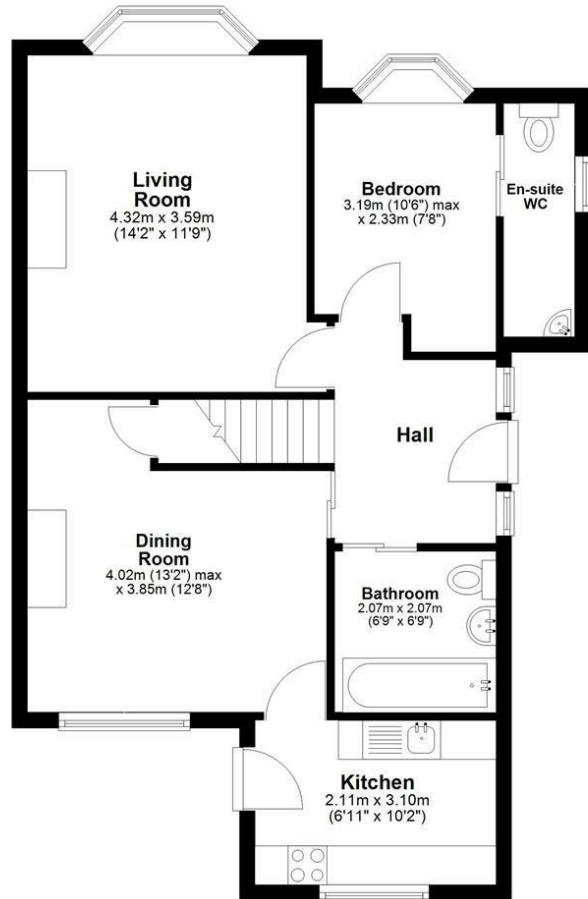
There is a driveway to the front providing off-road parking facilities. There is a large garden to the rear which offers huge potential.

Energy Efficiency Rating

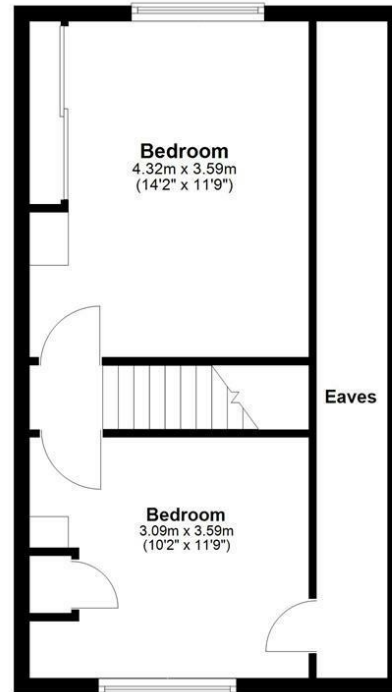


Page & Wells limited for themselves and for the vendors of this property whose agents they are give notice that: 1. These particulars do not constitute any part of, an offer or a contract. 2. All statements contained in these particulars as to this property are made without responsibility on the part of Page & Wells Limited or the Vendor. 3. None of the statements contained in these particulars as to the property is to be relied on as statements or representations of fact. 4. Any intending purchaser must satisfy himself by inspection or otherwise as to the correctness of each of the statements contained in these particulars. 5. The vendor does not make or give, and neither Page & Wells Limited nor any person in their employment has any authority to make or give any representation whatsoever in relation to this property. These particulars are supplied on the understanding that all negotiations are carried out throughout Page & Wells Limited. Properties with a reference prefixes EAA are those which Page & Wells Limited disclose an interest in accordance with the provisions of the Estates Agents Act 1979

Ground Floor



First Floor



Total area: approx. 89.8 sq. metres (967.1 sq. feet)

