



5-7 Moor Lane, Liverpool, L23 2SE

£775 PCM

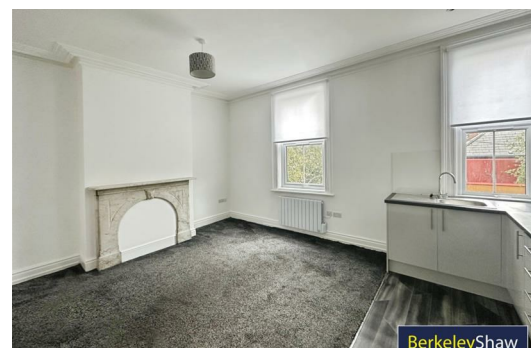
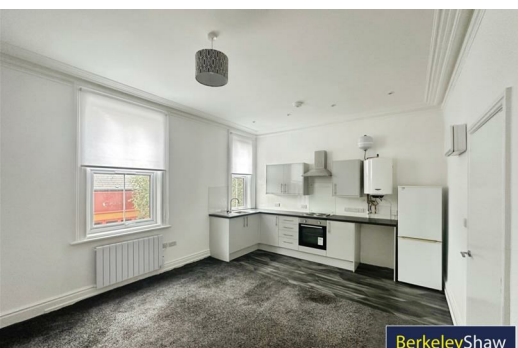
Nestled in the charming Crosby Village, this beautifully refurbished apartment on Moor Lane offers a delightful blend of modern living and comfort. The property features a spacious reception room, perfect for entertaining guests or enjoying a quiet evening in. With two well-proportioned bedrooms, this apartment is ideal for couples, or individuals seeking a stylish yet practical living space.

The bathroom has been thoughtfully designed, ensuring both functionality and a touch of elegance. The refurbishment has brought a fresh and contemporary feel to the apartment, making it a welcoming retreat for its new occupants.

Crosby is known for its vibrant community and proximity to local amenities, including shops, parks, and excellent transport links, making it a convenient choice for those commuting to Liverpool city centre or beyond.

This apartment presents a wonderful opportunity for anyone looking to settle in a desirable location with a modern touch. Don't miss the chance to make this lovely property your new home.

Deposit: £894
Council Tax Band:
Minimum Term: 12 Months



Hallway

Open Plan Lounge Kitchen

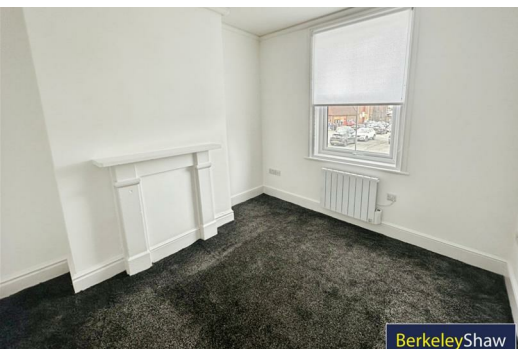
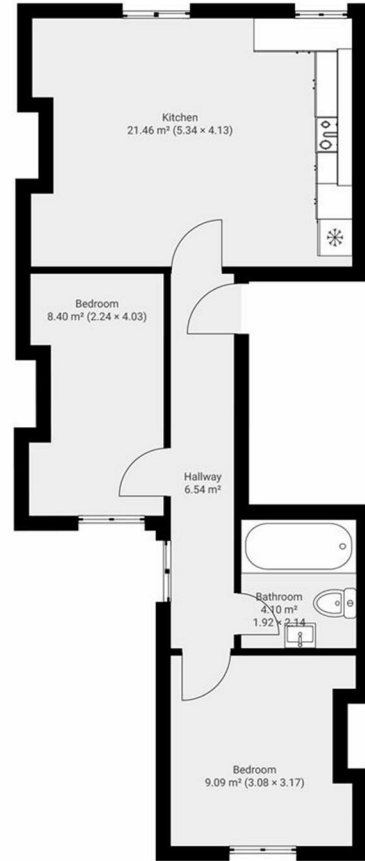
Bedroom 1

Bedroom 2

Bathroom

Energy Efficiency Rating		
	Current	Potential
<i>Very energy efficient - lower running costs</i>		
(92 plus) A		
(81-91) B		
(69-80) C		
(55-68) D		
(39-54) E		
(21-38) F		
(1-20) G		
<i>Not energy efficient - higher running costs</i>		
England & Wales	EU Directive 2002/91/EC	

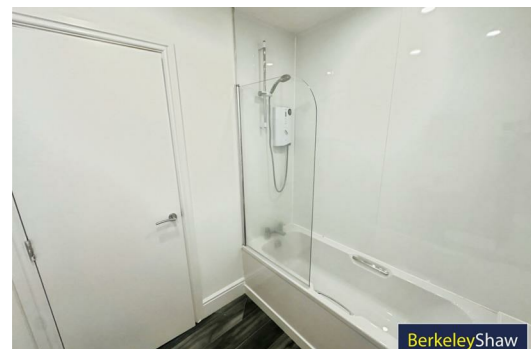
Environmental Impact (CO ₂) Rating		
	Current	Potential
<i>Very environmentally friendly - lower CO2 emissions</i>		
(92 plus) A		
(81-91) B		
(69-80) C		
(55-68) D		
(39-54) E		
(21-38) F		
(1-20) G		
<i>Not environmentally friendly - higher CO2 emissions</i>		
England & Wales	EU Directive 2002/91/EC	



BerkeleyShaw



BerkeleyShaw



BerkeleyShaw



Berkeley Shaw Estate Agents Limited.
Company No. 0784754

Berkeley Shaw Real Estate Limited.
Company No. 05206927

