

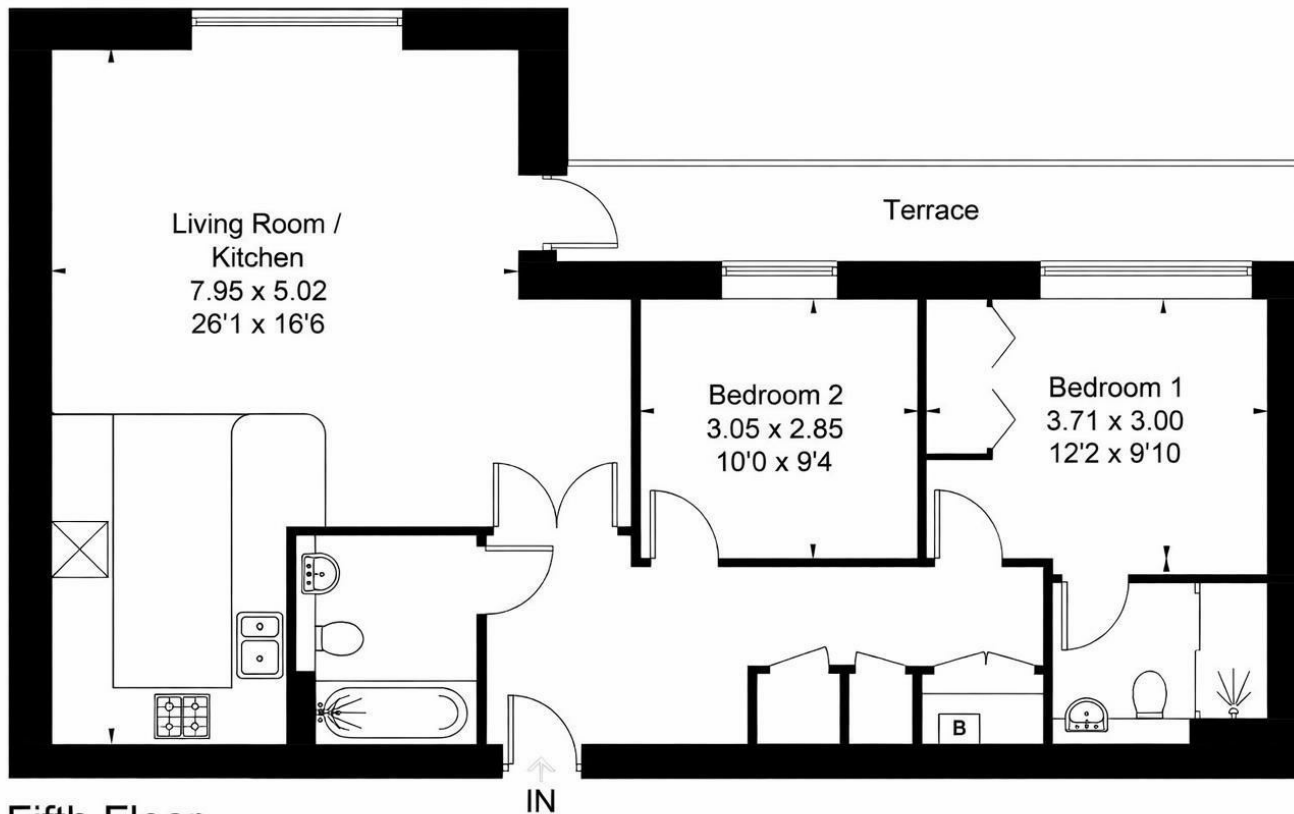


2 Bed  
Apartment  
located in

£3,400 Per Month



Approximate Area = 82.7 sq m / 890 sq ft  
 Including Limited Use Area (1.1 sq m / 12 sq ft)  
 For identification only. Not to scale.  
 © Fourwalls



Fifth Floor

Surveyed and drawn in accordance with the International Property Measurement Standards (IPMS 2: Residential)  
 fourwalls-group.com 297206

**DIRECTIONS**

**CONTACT**

Second Floor 9 Queen Square  
 Bristol  
 BS1 1JE

E: [hello@acenproperties.co.uk](mailto:hello@acenproperties.co.uk)  
 T: 01173634411  
[www.acenproperties.co.uk](http://www.acenproperties.co.uk)

| Energy Efficiency Rating                    |                         |           |
|---|-------------------------|-----------|
|   | Current                 | Potential |
| Very energy efficient - lower running costs |                         |           |
| (92 plus) <b>A</b>                          |                         |           |
| (81-91) <b>B</b>                            |                         |           |
| (69-80) <b>C</b>                            | 71                      | 71        |
| (55-68) <b>D</b>                            |                         |           |
| (39-54) <b>E</b>                            |                         |           |
| (21-38) <b>F</b>                            |                         |           |
| (1-20) <b>G</b>                             |                         |           |
| Not energy efficient - higher running costs |                         |           |
| <b>England &amp; Wales</b>                  | EU Directive 2002/91/EC |           |

